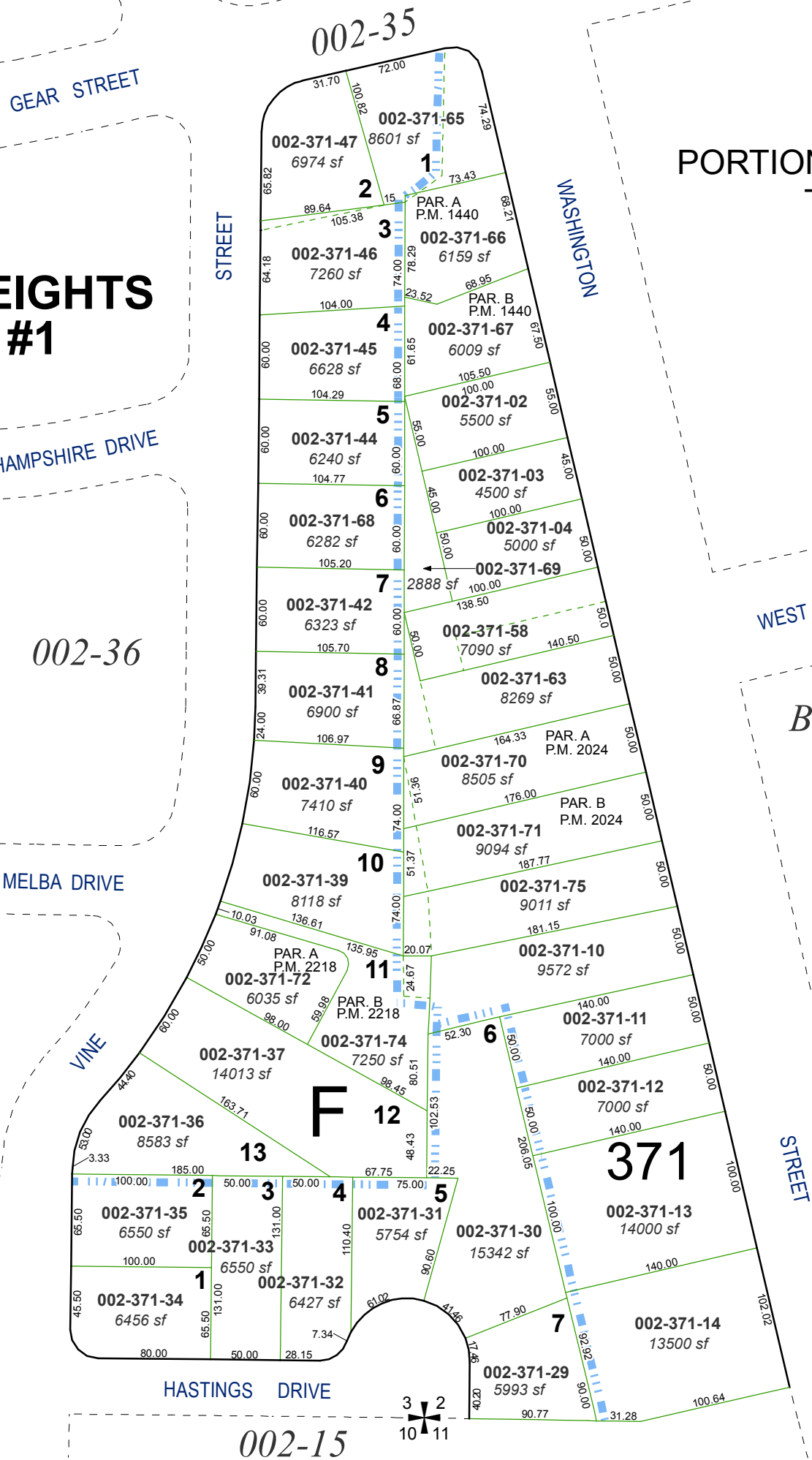


**(#274 B)
WASHINGTON HEIGHTS
SUBDIVISION #1**

**(#427)
PRAY ADDITION**



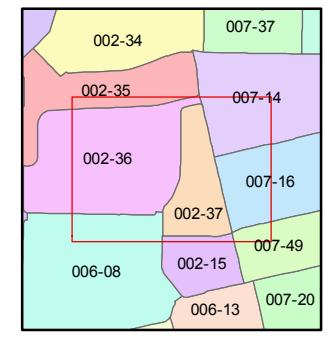
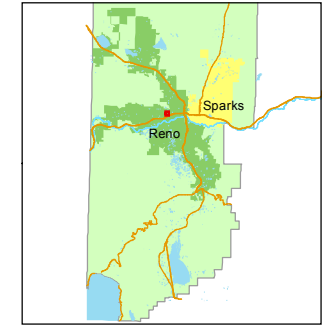
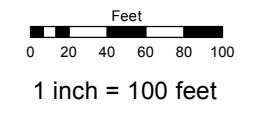
PORTIONS OF SEC.'S 2 & 3,
T19N - R19E

WEST 10th STREET
BOOK 007

Assessor's Map Number
002-37

STATE OF NEVADA
WASHOE COUNTY
ASSESSOR'S OFFICE
Joshua G. Wilson, Assessor

1001 East Ninth Street
Building D
Reno, Nevada 89512
(775) 328-2231



created by: CFB 07/20/2012
last updated: _____
area previously shown on map(s) _____

NOTE: This map was prepared for the use of the Washoe County Assessor for assessment and illustrative purposes only. It does not represent a survey of the premises. No liability is assumed as to the sufficiency or accuracy of the data delineated hereon.