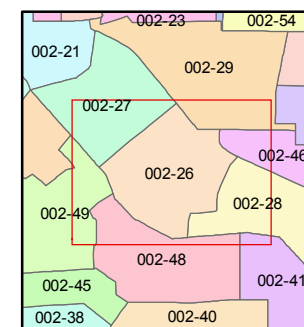
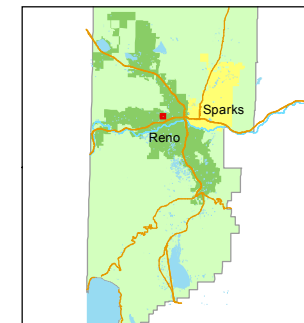


1 inch = 100 feet

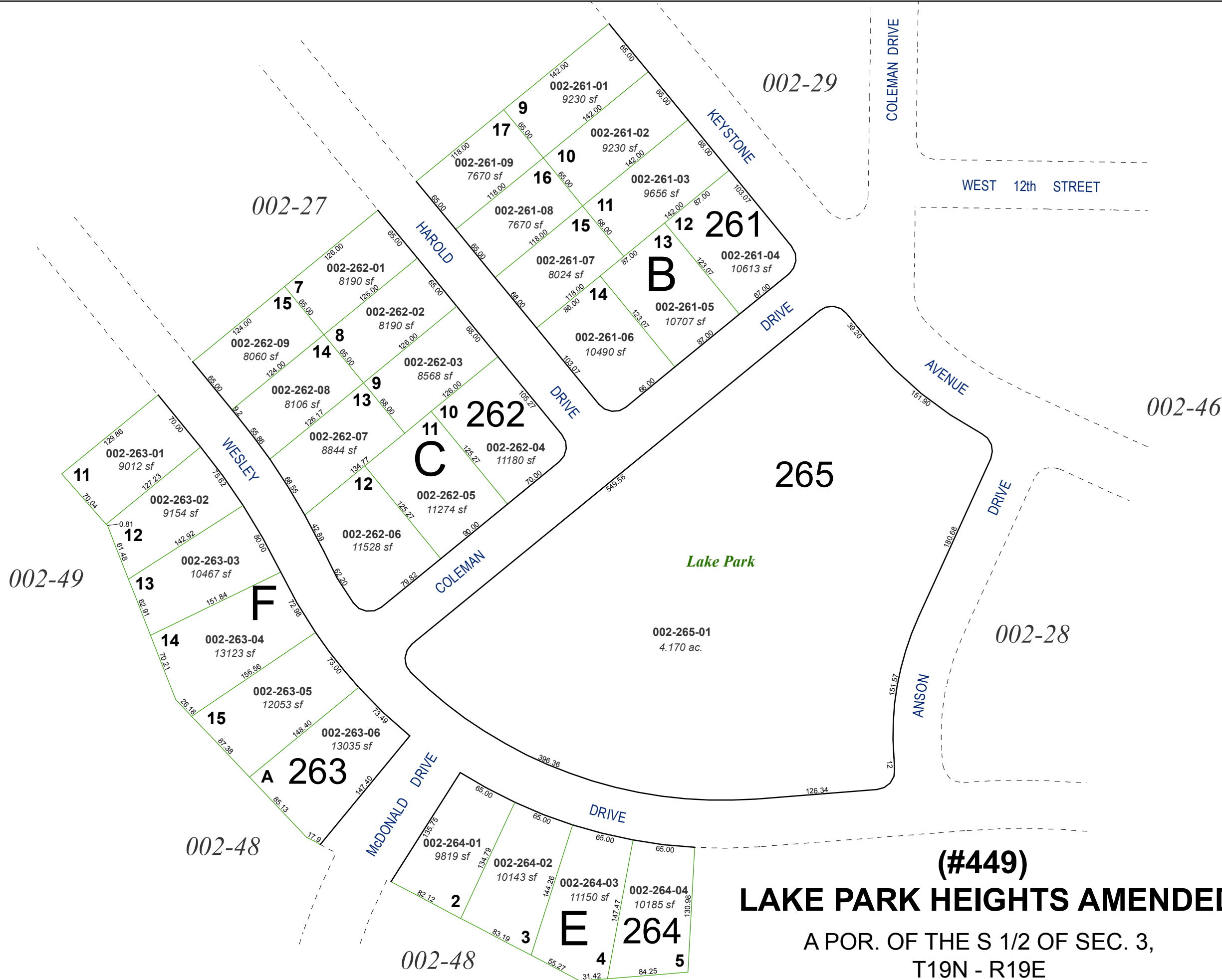


created by: CFB 07/20/2012

last updated:

area previously shown on map(s)

NOTE: This map was prepared for the use of the Washoe County Assessor for assessment and illustrative purposes only. It does not represent a survey of the premises. No liability is assumed as to the sufficiency or accuracy of the data delineated hereon.



**(#449)**  
**LAKE PARK HEIGHTS AMENDED**  
A POR. OF THE S 1/2 OF SEC. 3,  
T19N - R19E