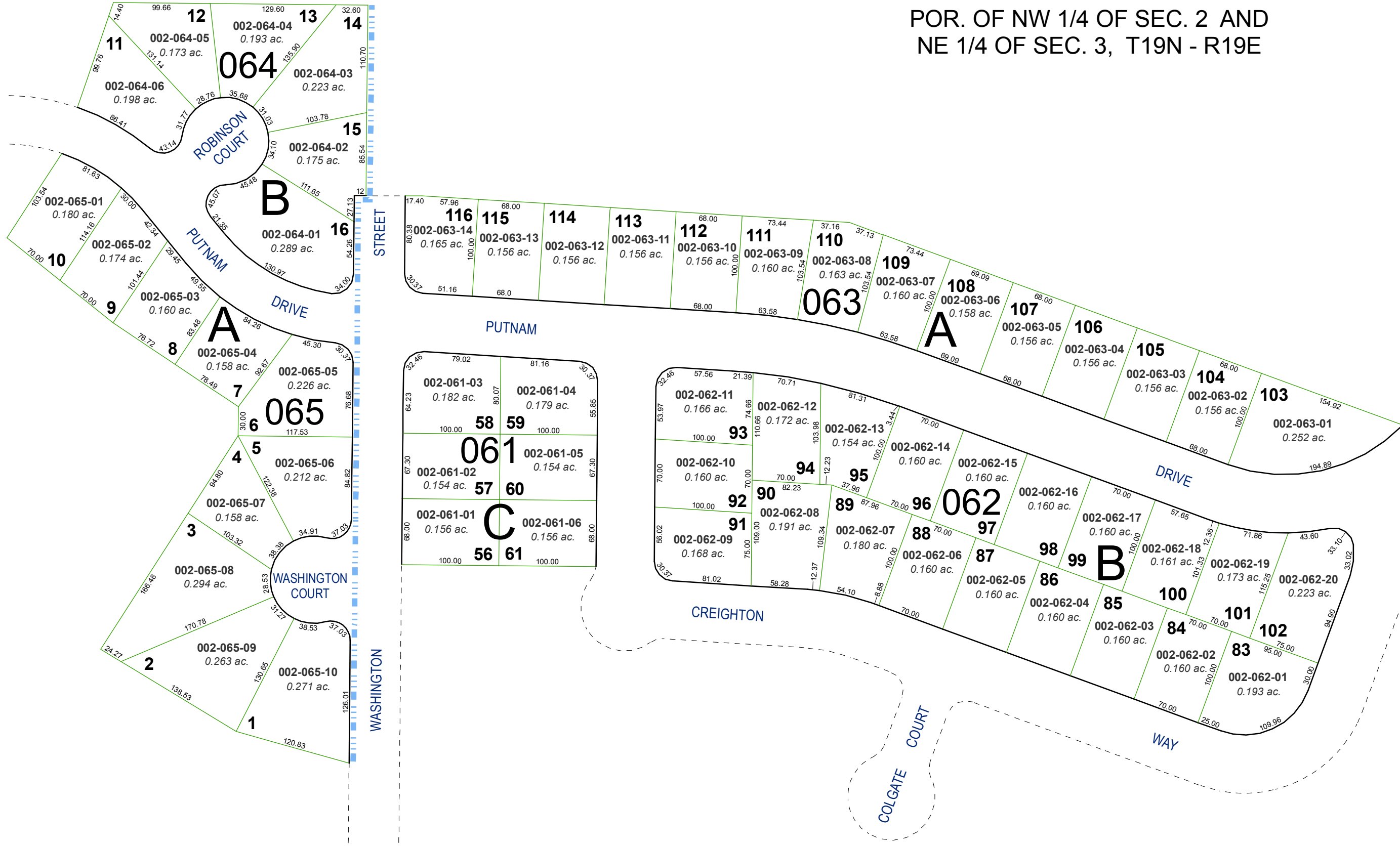


(#2306) EVANS PARK SUBDIVISION NO. 1

(#1729) COLLEGE TOWN SUBDIVISION

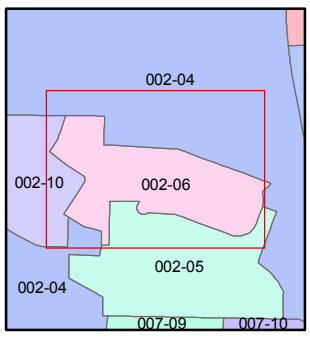
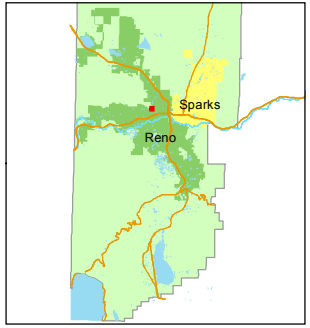
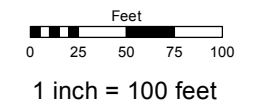
POR. OF NW 1/4 OF SEC. 2 AND
NE 1/4 OF SEC. 3, T19N - R19E



Assessor's Map Number
002-06

STATE OF NEVADA
WASHOE COUNTY
ASSESSOR'S OFFICE
Joshua G. Wilson, Assessor

1001 East Ninth Street
Building D
Reno, Nevada 89512
(775) 328-2231



created by: TWT 3/14/2012
last updated: _____
area previously shown on map(s) _____

NOTE: This map was prepared for the use of the Washoe County Assessor for assessment and illustrative purposes only. It does not represent a survey of the premises. No liability is assumed as to the sufficiency or accuracy of the data delineated hereon.