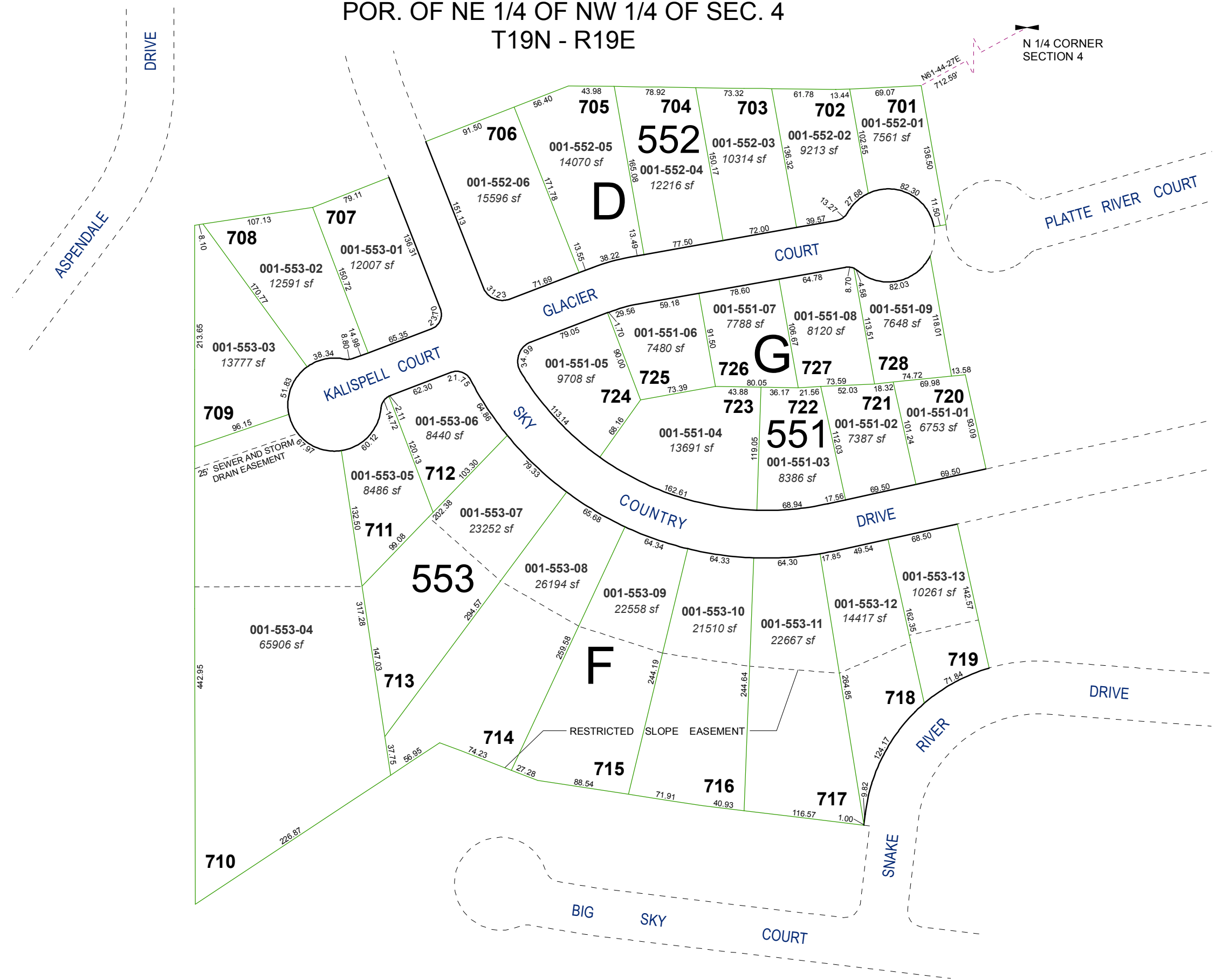


# (#3534) SKY COUNTRY ESTATES - UNIT 7

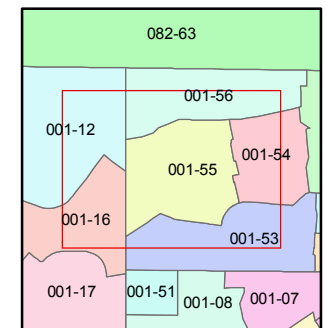
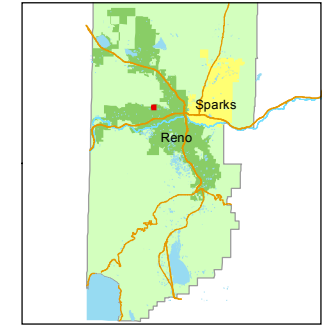
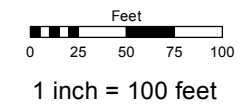
POR. OF NE 1/4 OF NW 1/4 OF SEC. 4  
T19N - R19E



Assessor's Map Number  
**001-55**

STATE OF NEVADA  
**WASHOE COUNTY**  
ASSESSOR'S OFFICE  
Joshua G. Wilson, Assessor

1001 East Ninth Street  
Building D  
Reno, Nevada 89512  
(775) 328-2231



created by: TWT 3/7/2012  
last updated: \_\_\_\_\_  
area previously shown on map(s)  
001-51

NOTE: This map was prepared for the use of the Washoe County Assessor for assessment and illustrative purposes only. It does not represent a survey of the premises. No liability is assumed as to the sufficiency or accuracy of the data delineated hereon.