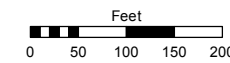


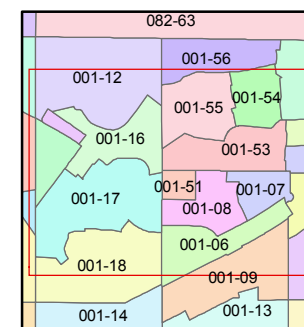
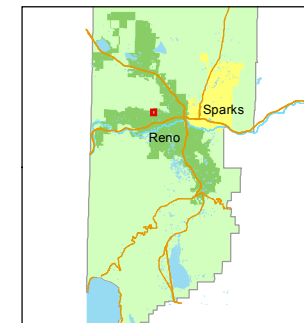
PORTION OF SE 1/4 OF NW 1/4 OF SECTION 4
T19N - R19E

STATE OF NEVADA
WASHOE COUNTY
ASSESSOR'S OFFICE
Joshua G. Wilson, Assessor

1001 East Ninth Street
Building D
Reno, Nevada 89512
(775) 328-2231



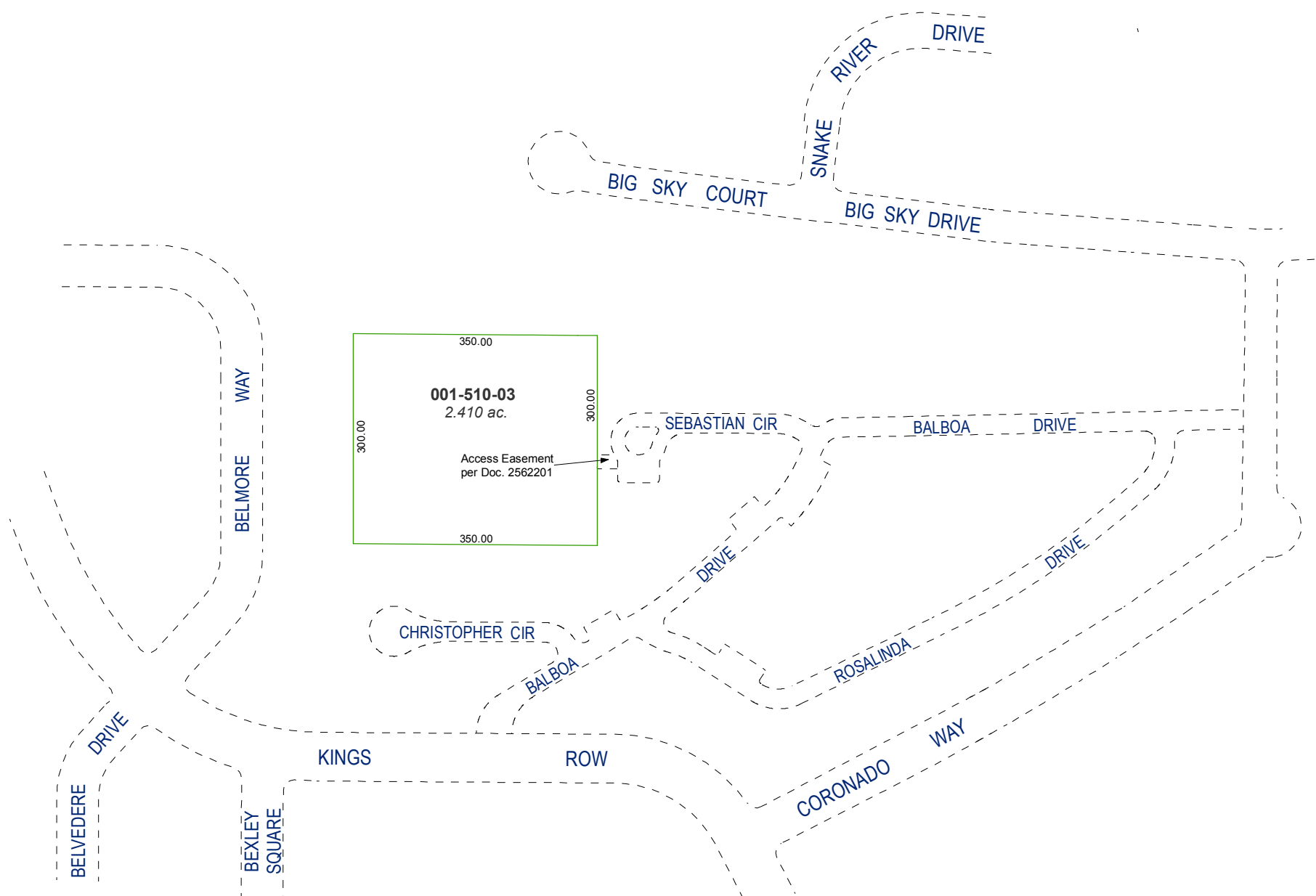
1 inch = 200 feet



created by: TWT 03/05/2012

last updated: CFB 03/16/2012

area previously shown on map(s)



NOTE: This map was prepared for the use of the Washoe County Assessor for assessment and illustrative purposes only. It does not represent a survey of the premises. No liability is assumed as to the sufficiency or accuracy of the data delineated hereon.