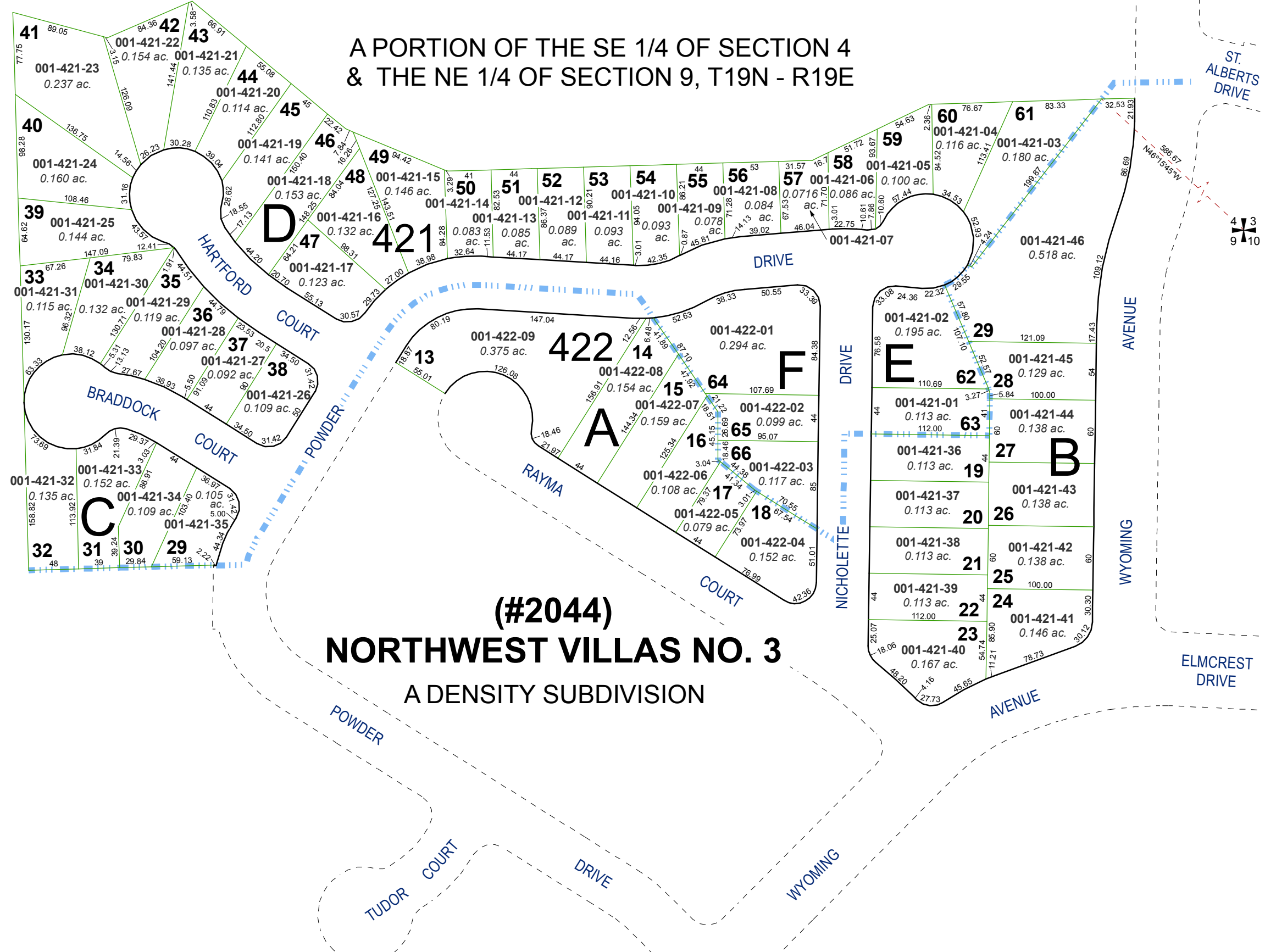


# (#2028) NORTHWEST VILLAS NO. 2 A DENSITY SUBDIVISION

A PORTION OF THE SE 1/4 OF SECTION 4  
& THE NE 1/4 OF SECTION 9, T19N - R19E

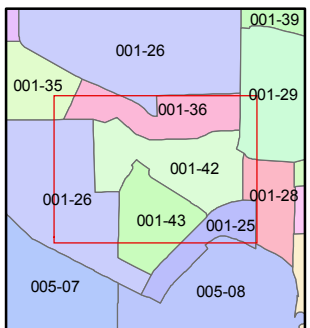
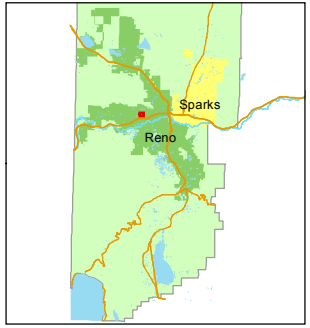
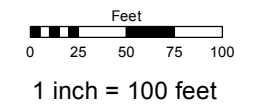


# (#2044) NORTHWEST VILLAS NO. 3 A DENSITY SUBDIVISION

Assessor's Map Number  
**001-42**

STATE OF NEVADA  
**WASHOE COUNTY**  
ASSESSOR'S OFFICE  
Joshua G. Wilson, Assessor

1001 East Ninth Street  
Building D  
Reno, Nevada 89512  
(775) 328-2231



created by: TWT 2/27/2012

last updated: \_\_\_\_\_

area previously shown on map(s)  
\_\_\_\_\_

NOTE: This map was prepared for the use of the Washoe County Assessor for assessment and illustrative purposes only. It does not represent a survey of the premises. No liability is assumed as to the sufficiency or accuracy of the data delineated hereon.