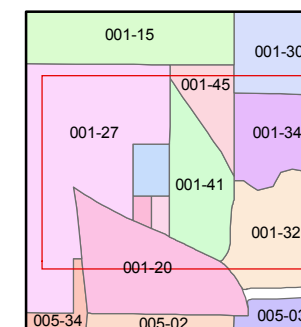
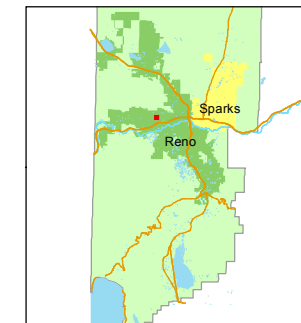


STATE OF NEVADA  
**WASHOE COUNTY**  
ASSESSOR'S OFFICE  
Joshua G. Wilson, Assessor

1001 East Ninth Street  
Building D  
Reno, Nevada 89512  
(775) 328-2231



1 inch = 100 feet



created by: TWT 2/24/2012

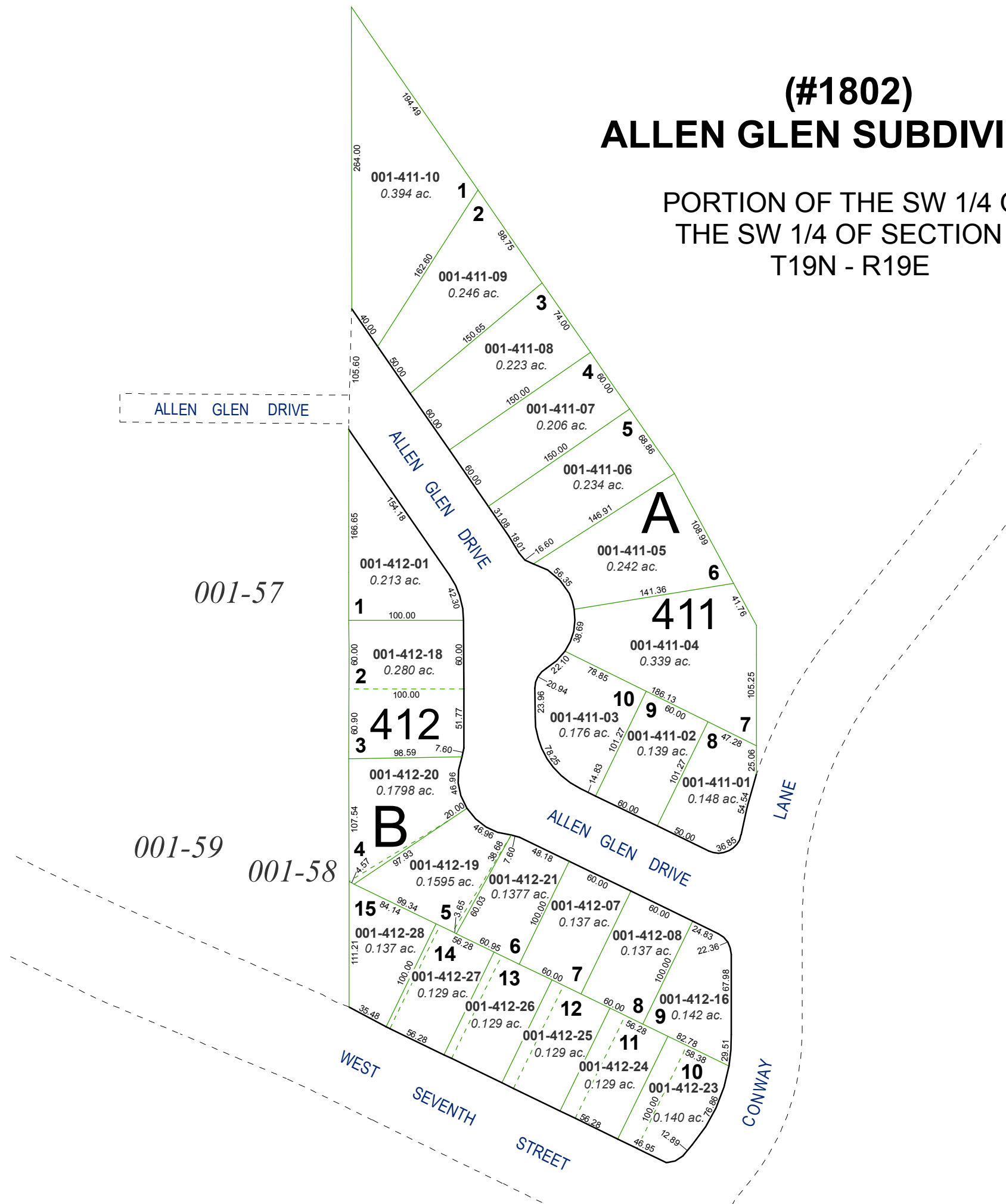
last updated: \_\_\_\_\_

area previously shown on map(s)  
\_\_\_\_\_

NOTE: This map was prepared for the use of the Washoe County Assessor for assessment and illustrative purposes only. It does not represent a survey of the premises. No liability is assumed as to the sufficiency or accuracy of the data delineated hereon.

# (#1802) ALLEN GLEN SUBDIVISION

PORTION OF THE SW 1/4 OF  
THE SW 1/4 OF SECTION 4  
T19N - R19E



ALLEN GLEN DRIVE

001-57

001-59

001-58

WEST SEVENTH STREET

LANE

CONWAY