

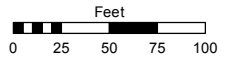
**(#1101)
SIERRA HEIGHTS RENO
UNIT 3-E**

POR. OF SE 1/4 OF SEC. 4
T19N - R19E

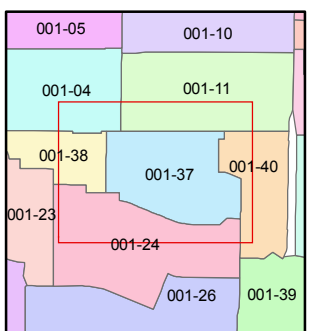
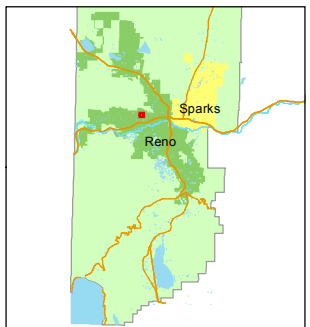
Assessor's Map Number
001-37

STATE OF NEVADA
WASHOE COUNTY
ASSESSOR'S OFFICE
Joshua G. Wilson, Assessor

1001 East Ninth Street
Building D
Reno, Nevada 89512
(775) 328-2231



1 inch = 100 feet

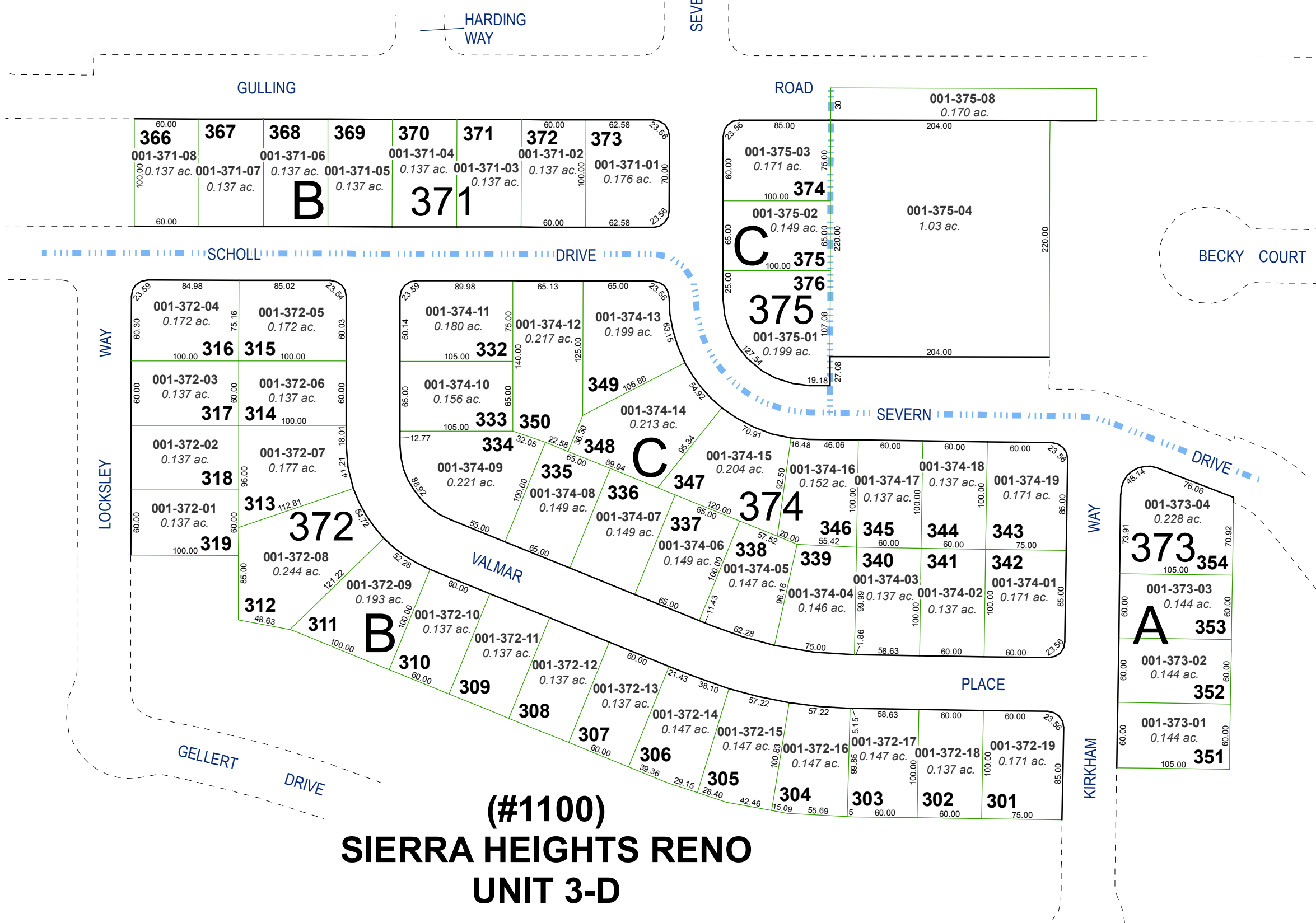


created by: TWT 2/22/2012

last updated: _____

area previously shown on map(s)

NOTE: This map was prepared for the use of the Washoe County Assessor for assessment and illustrative purposes only. It does not represent a survey of the premises. No liability is assumed as to the sufficiency or accuracy of the data delineated hereon.



**(#1100)
SIERRA HEIGHTS RENO
UNIT 3-D**