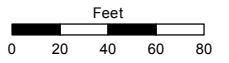


(#1357)
SIERRA LOMA UNIT NO. 3
 A DENSITY SUBDIVISION
 A POR. OF THE S ½ OF SEC. 4
 T19N - R19E

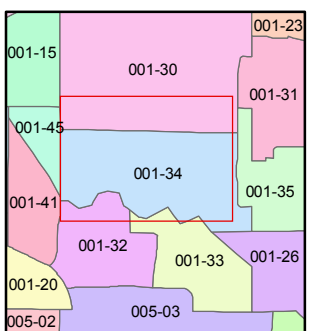
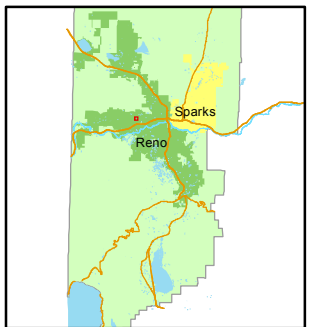
Assessor's Map Number
001-34-S1

STATE OF NEVADA
WASHOE COUNTY
ASSESSOR'S OFFICE
 Joshua G. Wilson, Assessor

1001 East Ninth Street
 Building D
 Reno, Nevada 89512
 (775) 328-2231



1 inch = 80 feet



created by: NLH 5/03/2012

last updated: _____

area previously shown on map(s) _____

NOTE: This map was prepared for the use of the Washoe County Assessor for assessment and illustrative purposes only. It does not represent a survey of the premises. No liability is assumed as to the sufficiency or accuracy of the data delineated herein.



SEE PAGE 001-34-S2 FOR UNIT DETAILS