

(#1189)

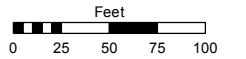
# SIERRA HEIGHTS RENO UNIT 7

Assessor's Map Number

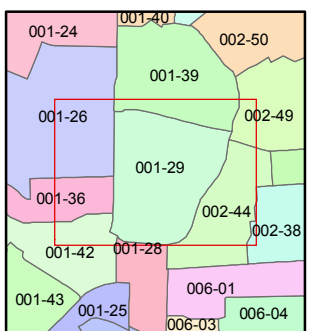
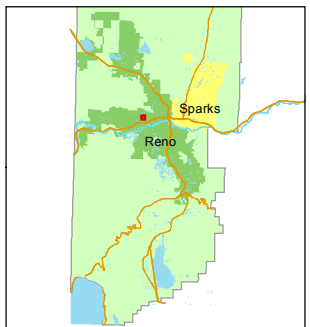
**001-29**

STATE OF NEVADA  
**WASHOE COUNTY**  
ASSESSOR'S OFFICE  
Joshua G. Wilson, Assessor

1001 East Ninth Street  
Building D  
Reno, Nevada 89512  
(775) 328-2231



1 inch = 100 feet



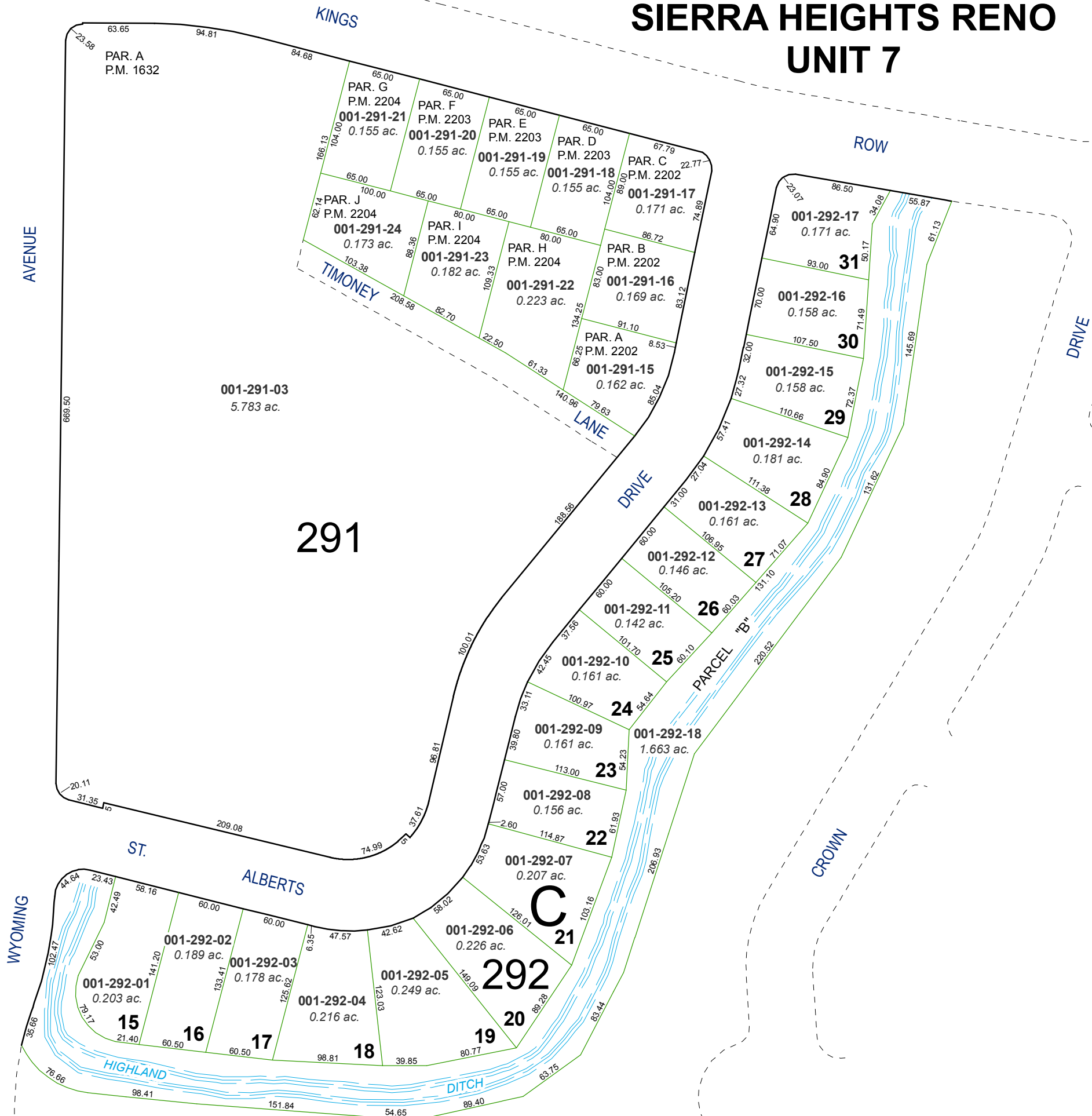
created by: TWT 2/14/2012

last updated: \_\_\_\_\_

area previously shown on map(s) \_\_\_\_\_

NOTE: This map was prepared for the use of the Washoe County Assessor for assessment and illustrative purposes only. It does not represent a survey of the premises. No liability is assumed as to the sufficiency or accuracy of the data delineated hereon.

POR. OF SW 1/4 OF SEC. 3  
& SE 1/4 OF SEC. 4  
T19N - R19E



291

292