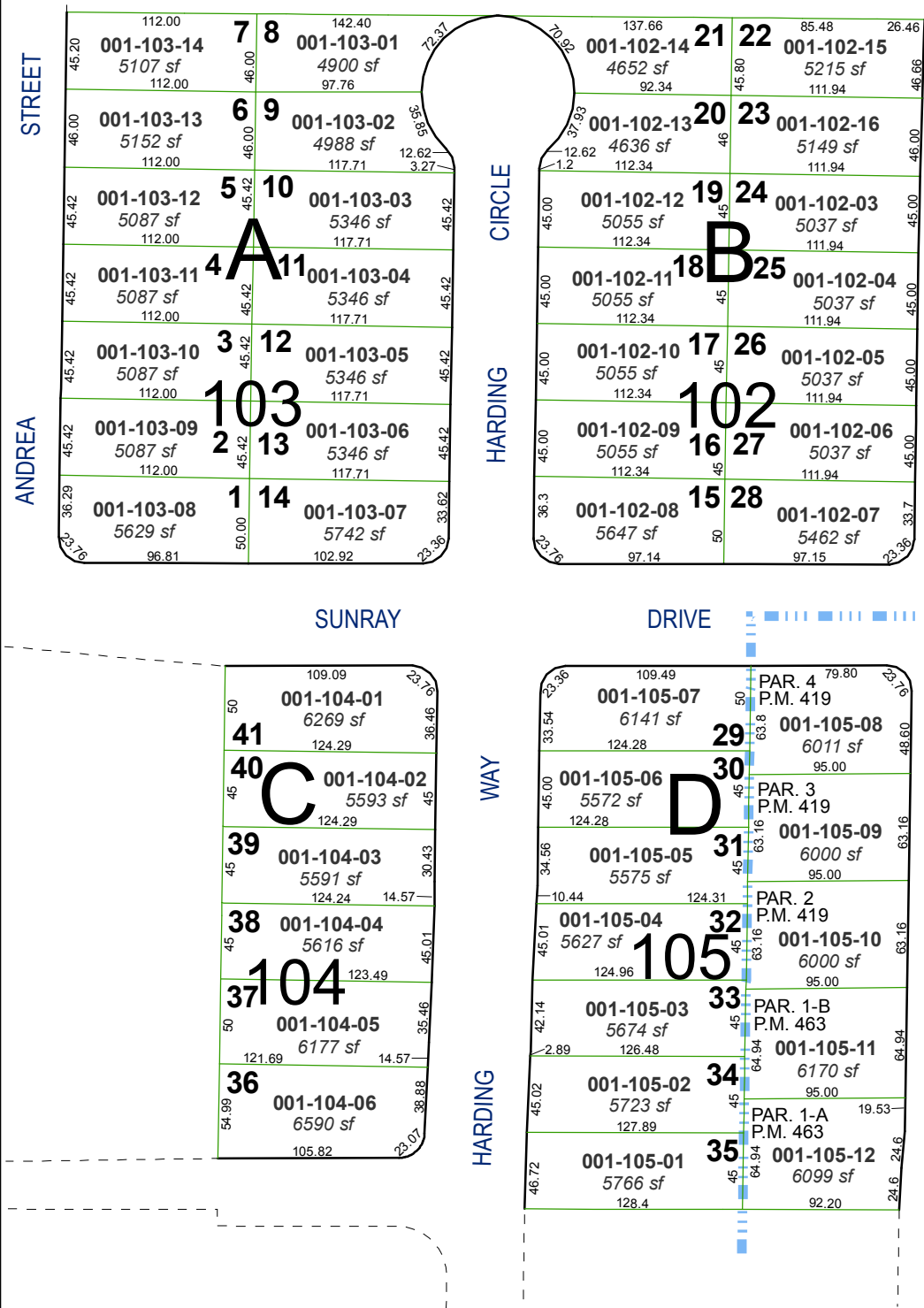
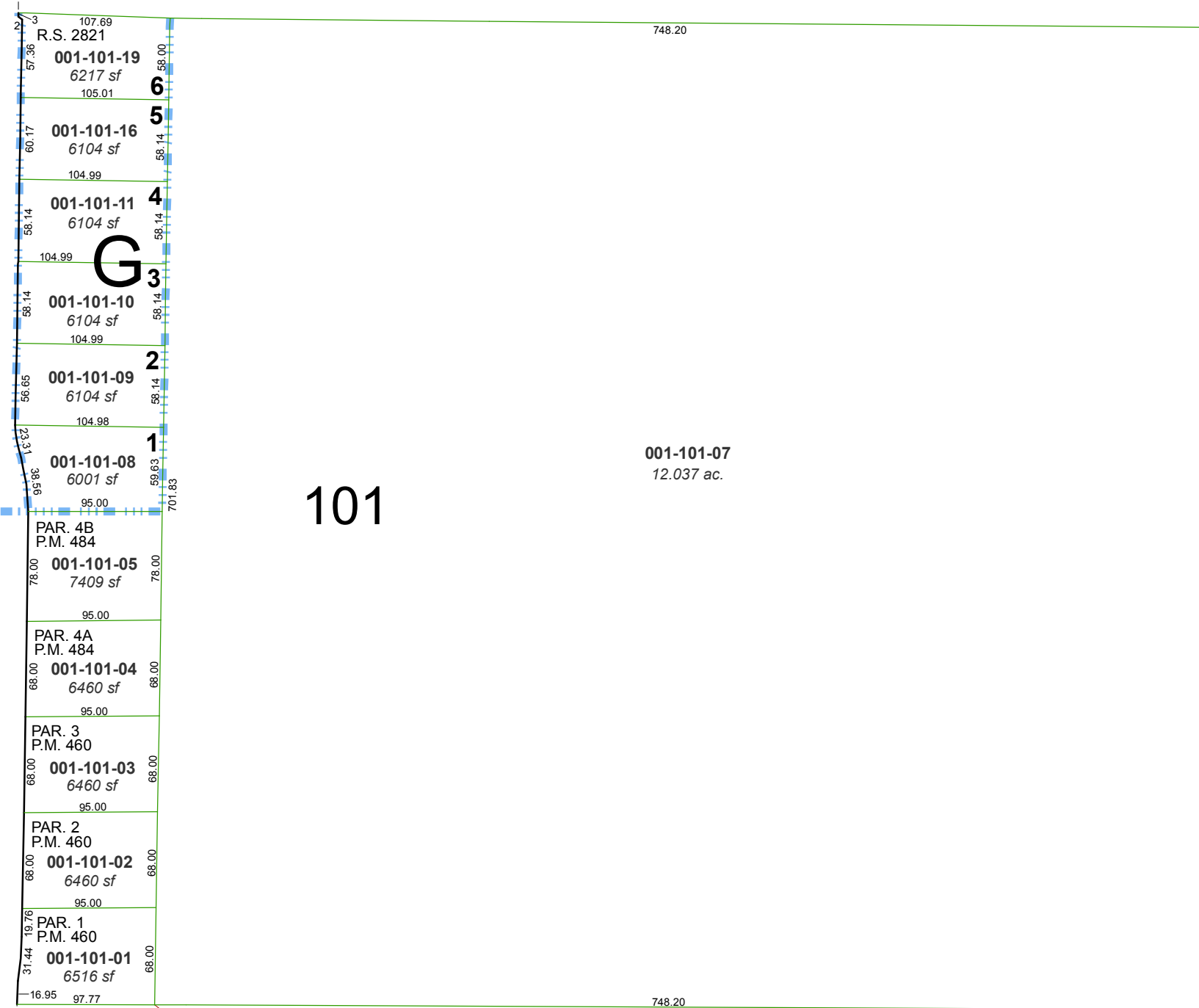


(#2063) SUNBURST SUBDIVISION

A POR. OF THE NE 1/4 OF SEC. 4
T19N - R19E



(#2411) SEVERN VIEW SUBDIVISION

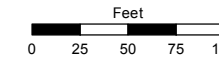


Assessor's Map Number

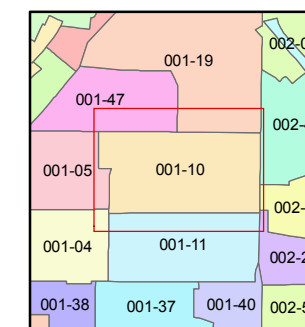
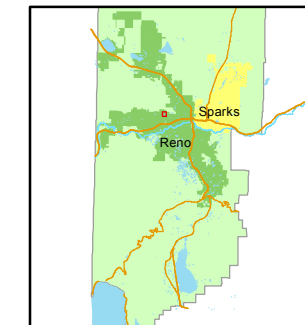
001-10

STATE OF NEVADA
WASHOE COUNTY
ASSESSOR'S OFFICE
Joshua G. Wilson, Assessor

1001 East Ninth Street
Building D
Reno, Nevada 89512
(775) 328-2231



1 inch = 100 feet



created by: NLH 5/03/2012

last updated: _____

area previously shown on map(s) _____

NOTE: This map was prepared for the use of the Washoe County Assessor for assessment and illustrative purposes only. It does not represent a survey of the premises. No liability is assumed as to the sufficiency or accuracy of the data delineated herein.

101

001-101-07
12.037 ac.

S. 50.20.03 E.
971.64