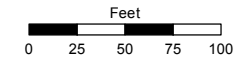


(#4847)
AMBER MEADOWS PHASE 1
 A POR. OF THE W 1/2 OF SEC. 9
 T20N - R19E

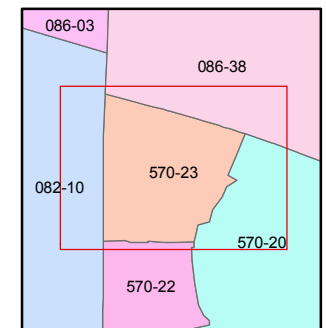
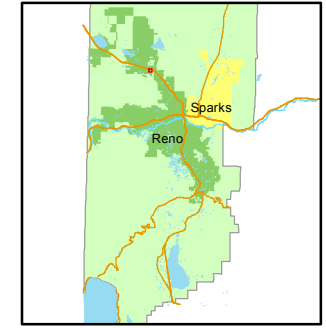
Assessor's Map Number
570-23

STATE OF NEVADA
WASHOE COUNTY
ASSESSOR'S OFFICE
 Joshua G. Wilson, Assessor

1001 East Ninth Street
 Building D
 Reno, Nevada 89512
 (775) 328-2231



1 inch = 100 feet

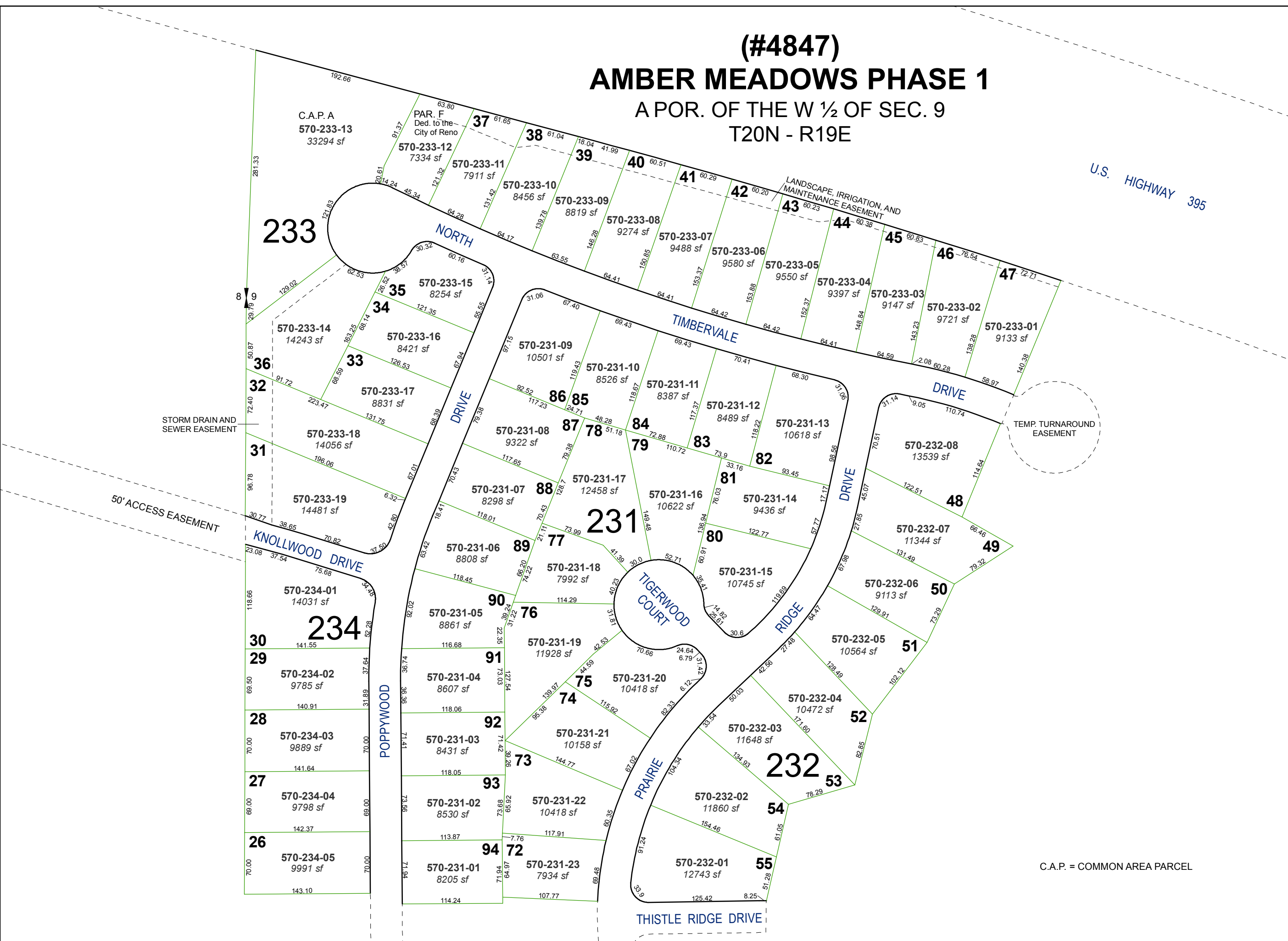


created by: NLH 3/22/2012

last updated: _____

area previously shown on map(s)
082-11

NOTE: This map was prepared for the use of the Washoe County Assessor for assessment and illustrative purposes only. It does not represent a survey of the premises. No liability is assumed as to the sufficiency or accuracy of the data delineated hereon.



C.A.P. = COMMON AREA PARCEL