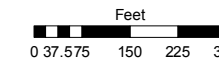
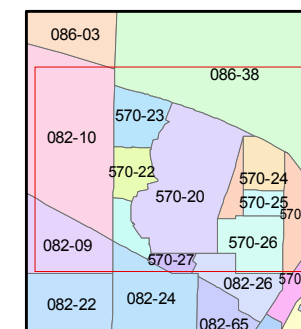
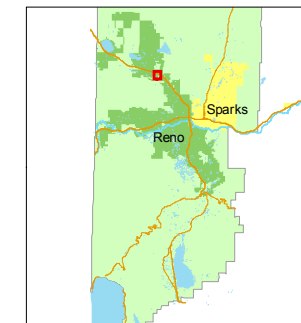


STATE OF NEVADA
WASHOE COUNTY
ASSESSOR'S OFFICE
Joshua G. Wilson, Assessor

1001 East Ninth Street
Building D
Reno, Nevada 89512
(775) 328-2231



1 inch = 300 feet



created by: CFB 03/14/2011

last updated: _____

area previously shown on map(s)

082-11

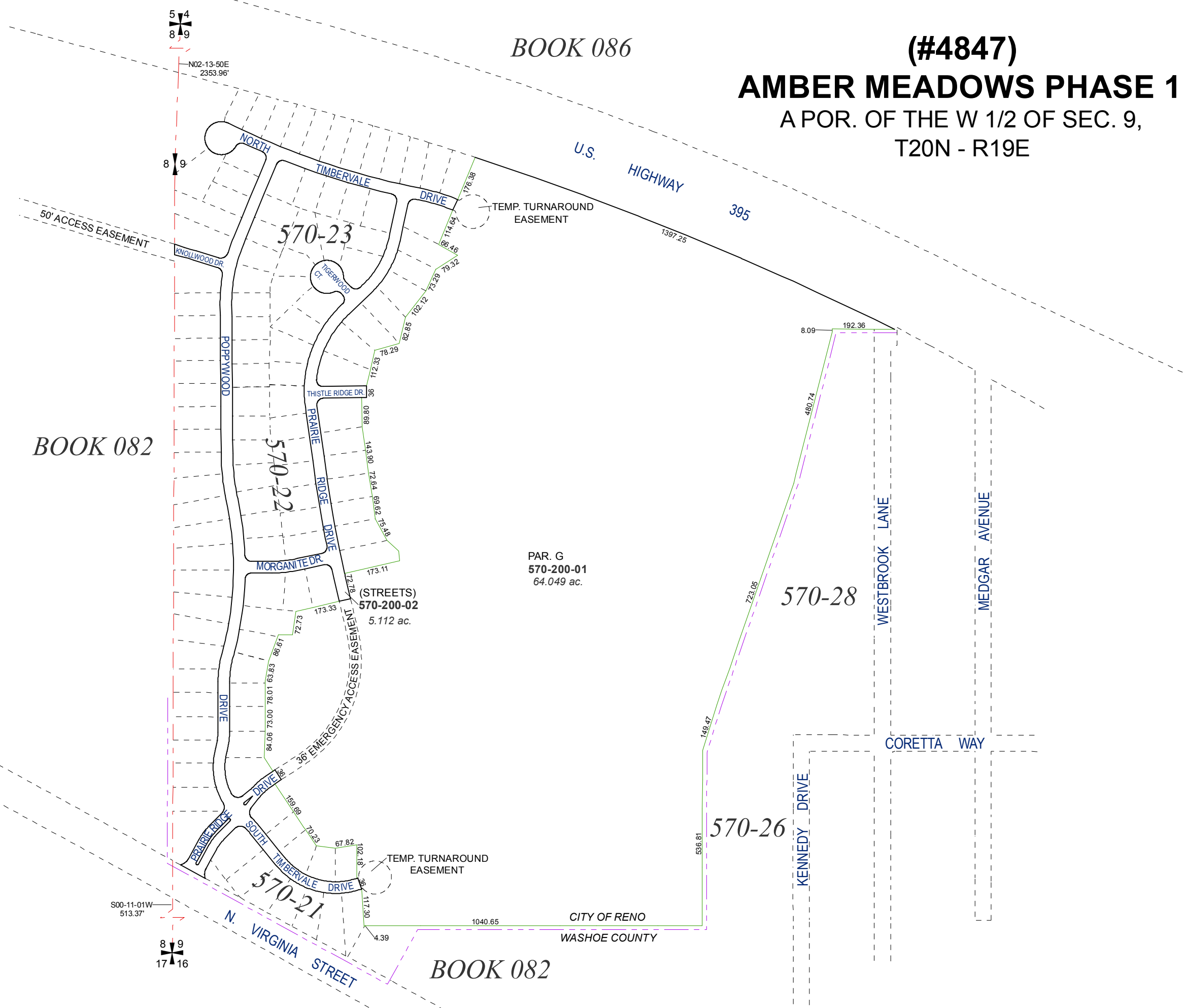
NOTE: This map was prepared for the use of the Washoe County Assessor for assessment and illustrative purposes only. It does not represent a survey of the premises. No liability is assumed as to the sufficiency or accuracy of the data delineated hereon.

BOOK 086

(#4847)

AMBER MEADOWS PHASE 1

A POR. OF THE W 1/2 OF SEC. 9,
T20N - R19E



PAR. G
570-200-01
64.049 ac.

(STREETS)
570-200-02
5.112 ac.



BOOK 082

BOOK 082

CITY OF RENO
WASHOE COUNTY