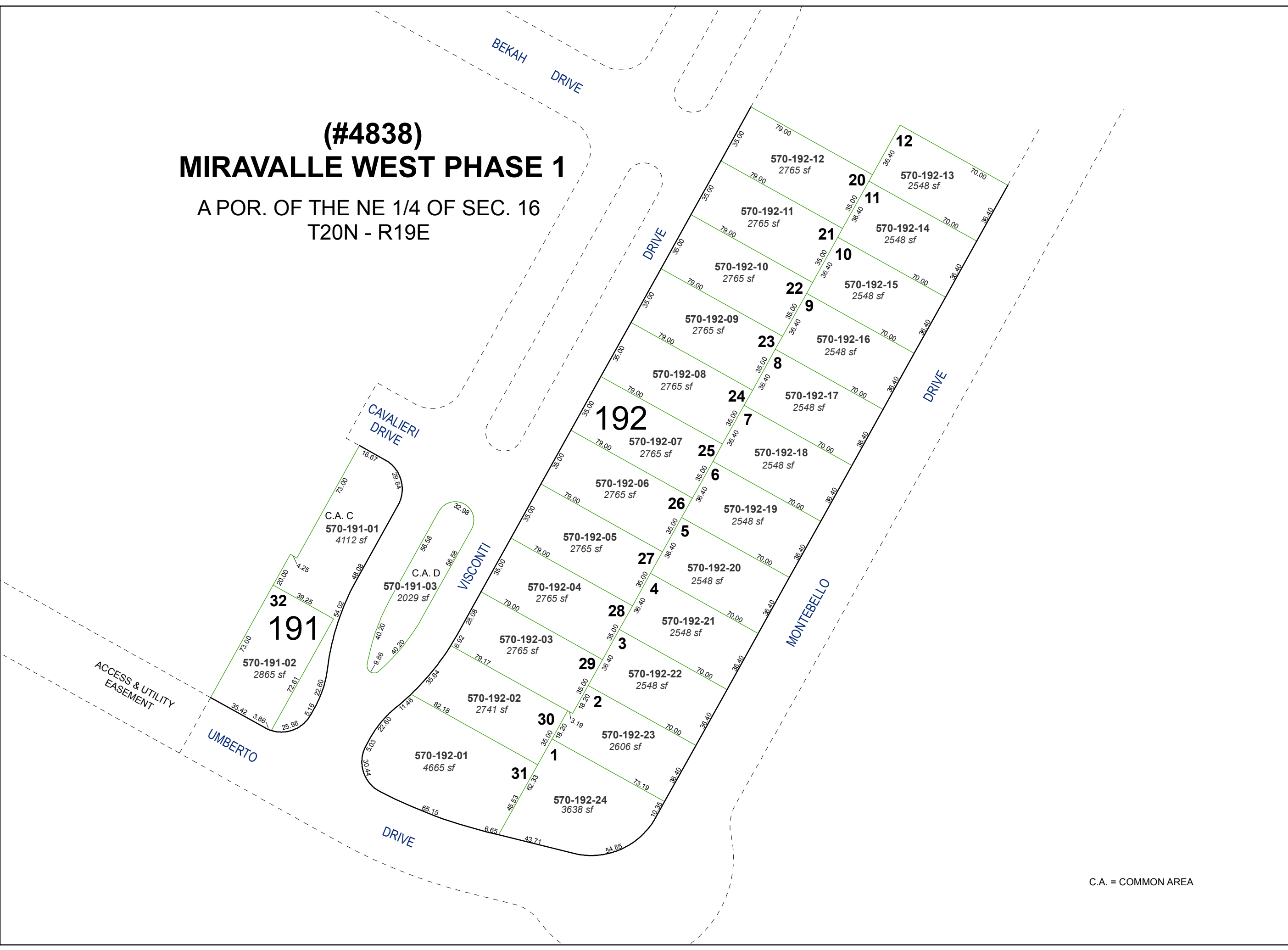


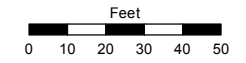
(#4838)
MIRAVALLE WEST PHASE 1
 A POR. OF THE NE 1/4 OF SEC. 16
 T20N - R19E



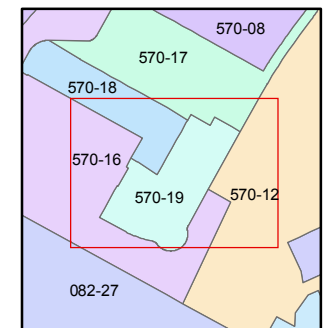
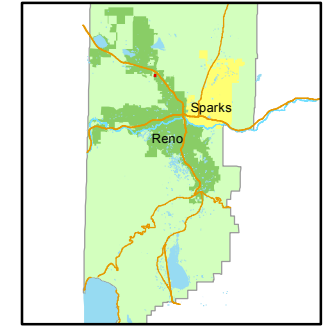
Assessor's Map Number
570-19

STATE OF NEVADA
WASHOE COUNTY
 ASSESSOR'S OFFICE
 Joshua G. Wilson, Assessor

1001 East Ninth Street
 Building D
 Reno, Nevada 89512
 (775) 328-2231



1 inch = 50 feet



created by: NLH 3/22/2012

last updated: _____

area previously shown on map(s)
570-12

C.A. = COMMON AREA

NOTE: This map was prepared for the use of the Washoe County Assessor for assessment and illustrative purposes only. It does not represent a survey of the premises. No liability is assumed as to the sufficiency or accuracy of the data delineated herein.