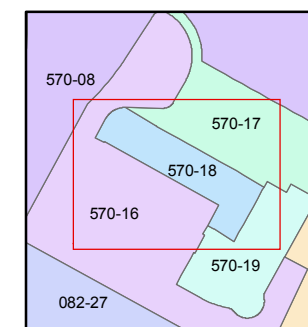
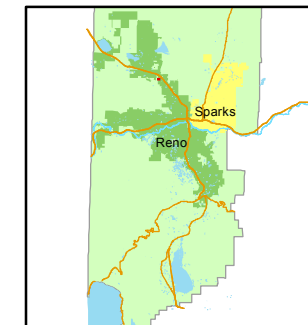


STATE OF NEVADA
WASHOE COUNTY
ASSESSOR'S OFFICE
Joshua G. Wilson, Assessor

1001 East Ninth Street
Building D
Reno, Nevada 89512
(775) 328-2231



1 inch = 50 feet



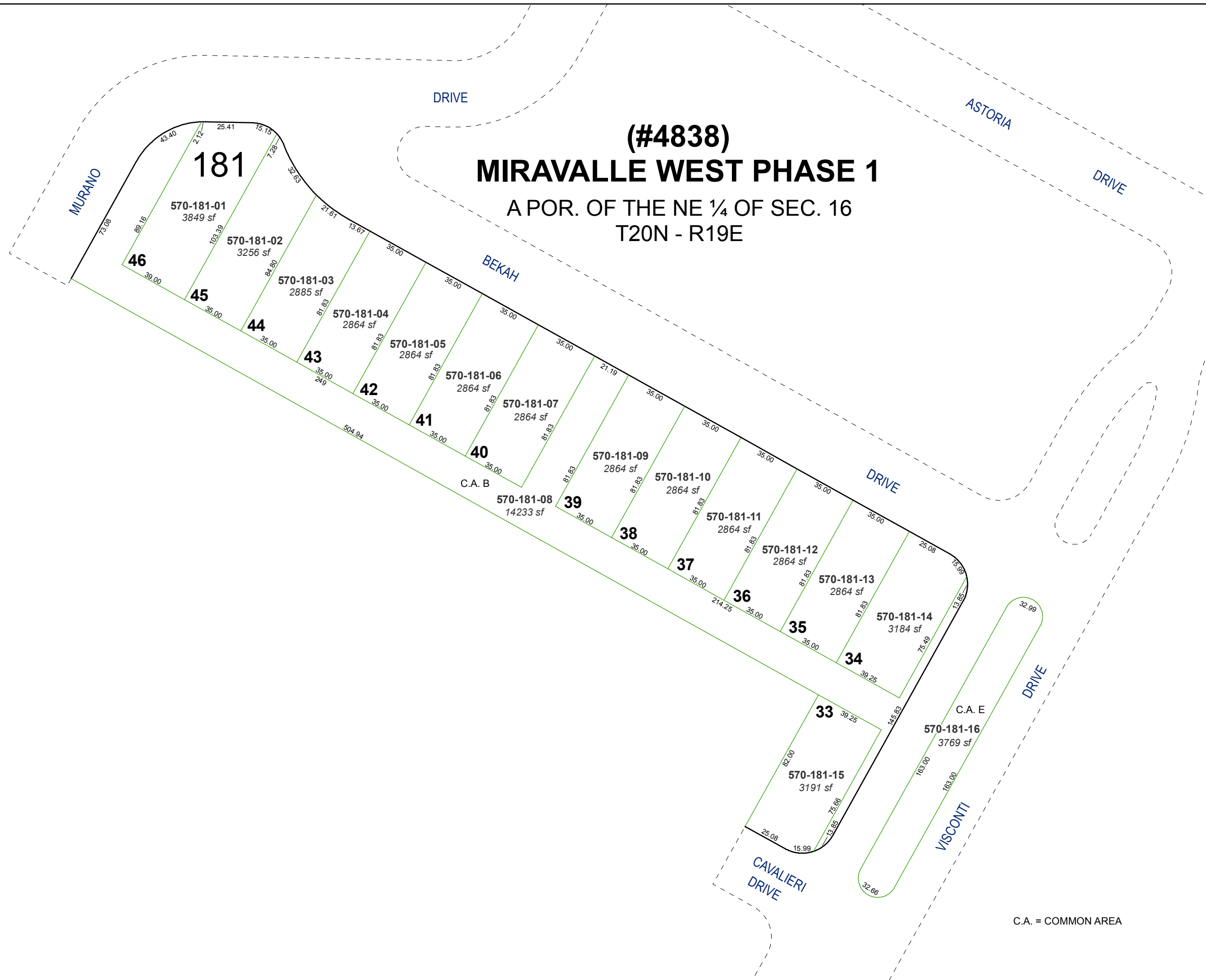
created by: NLH 3/22/2012

last updated: _____

area previously shown on map(s)

570-12

NOTE: This map was prepared for the use of the Washoe County Assessor for assessment and illustrative purposes only. It does not represent a survey of the premises. No liability is assumed as to the sufficiency or accuracy of the data delineated herein.



(#4838)
MIRAVALLE WEST PHASE 1
A POR. OF THE NE ¼ OF SEC. 16
T20N - R19E

C.A. = COMMON AREA