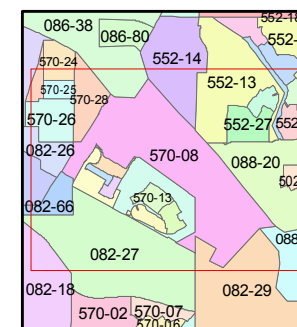
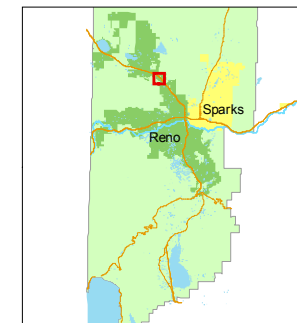


1 inch = 400 feet



created by: NLH 8/11/2009

last updated: CFB 03/14/2011

area previously shown on map(s)

082-11 & 18

NOTE: This map was prepared for the use of the Washoe County Assessor for assessment and illustrative purposes only. It does not represent a survey of the premises. No liability is assumed as to the sufficiency or accuracy of the data delineated hereon.

**A PORTION OF SECTIONS 09,15 & 16  
T20N - R19E**

*BOOK 88*

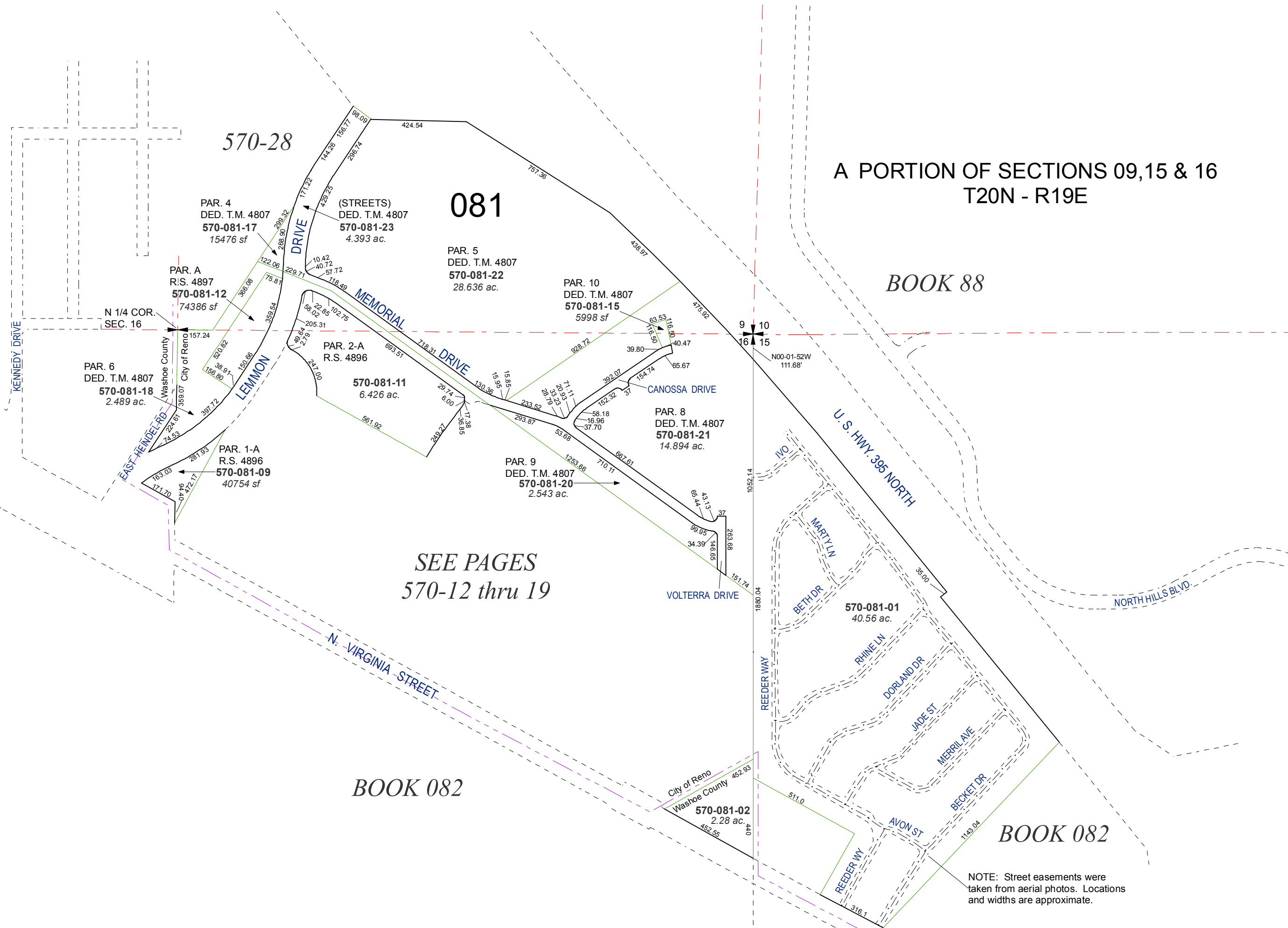
**081**

*SEE PAGES  
570-12 thru 19*

*BOOK 082*

*BOOK 082*

NOTE: Street easements were taken from aerial photos. Locations and widths are approximate.



570-28

PAR. 4  
DED. T.M. 4807  
**570-081-17**  
15476 sf

(STREETS)  
DED. T.M. 4807  
**570-081-23**  
4.393 ac.

PAR. 5  
DED. T.M. 4807  
**570-081-22**  
28.636 ac.

PAR. 10  
DED. T.M. 4807  
**570-081-15**  
5998 sf

PAR. A  
R.S. 4897  
**570-081-12**  
74386 sf

PAR. 6  
DED. T.M. 4807  
**570-081-18**  
2.489 ac.

PAR. 2-A  
R.S. 4896  
**570-081-11**  
6.426 ac.

PAR. 8  
DED. T.M. 4807  
**570-081-21**  
14.894 ac.

PAR. 1-A  
R.S. 4896  
**570-081-09**  
40754 sf

PAR. 9  
DED. T.M. 4807  
**570-081-20**  
2.543 ac.

**570-081-01**  
40.56 ac.

City of Reno  
Washoe County  
**570-081-02**  
2.28 ac.