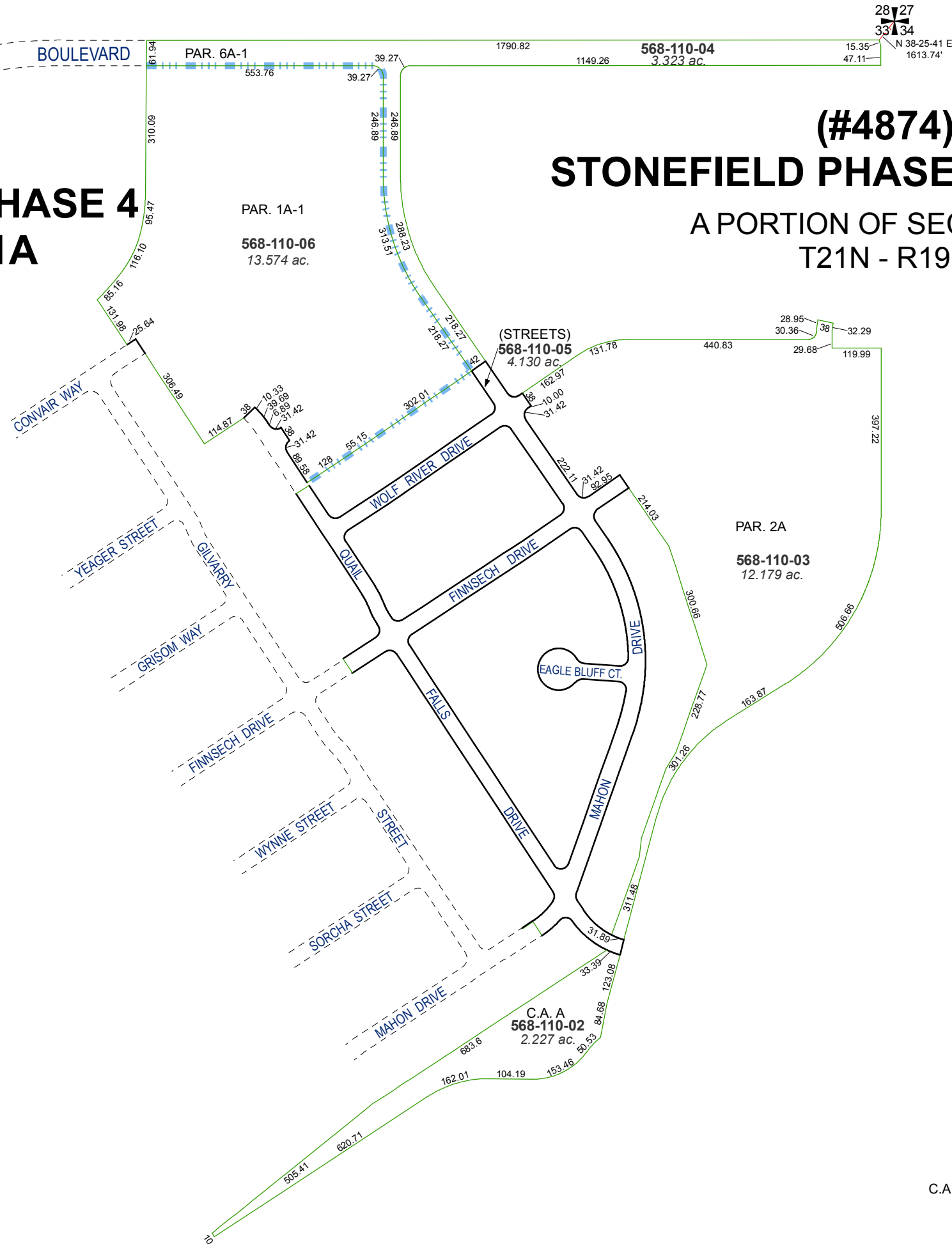


**(#5016)  
STONEFIELD PHASE 4  
VILLAGE 1A**

**(#4874)  
STONEFIELD PHASE 4, VILLAGE 2  
A PORTION OF SECTION 33  
T21N - R19E**



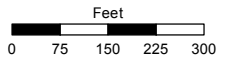
C.A. = COMMON AREA

Assessor's Map Number

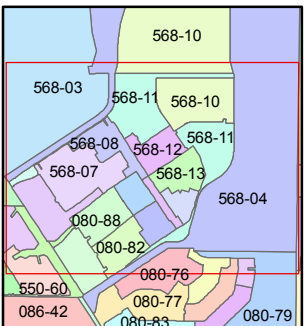
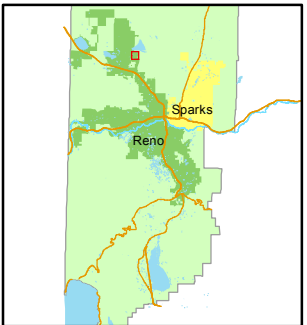
**568-11**

STATE OF NEVADA  
**WASHOE COUNTY**  
ASSESSOR'S OFFICE  
Joshua G. Wilson, Assessor

1001 East Ninth Street  
Building D  
Reno, Nevada 89512  
(775) 328-2231



1 inch = 300 feet



created by: NLH 2/21/2012

last updated: NLH 6/25/12

area previously shown on map(s)

568-10

NOTE: This map was prepared for the use of the Washoe County Assessor for assessment and illustrative purposes only. It does not represent a survey of the premises. No liability is assumed as to the sufficiency or accuracy of the data delineated hereon.