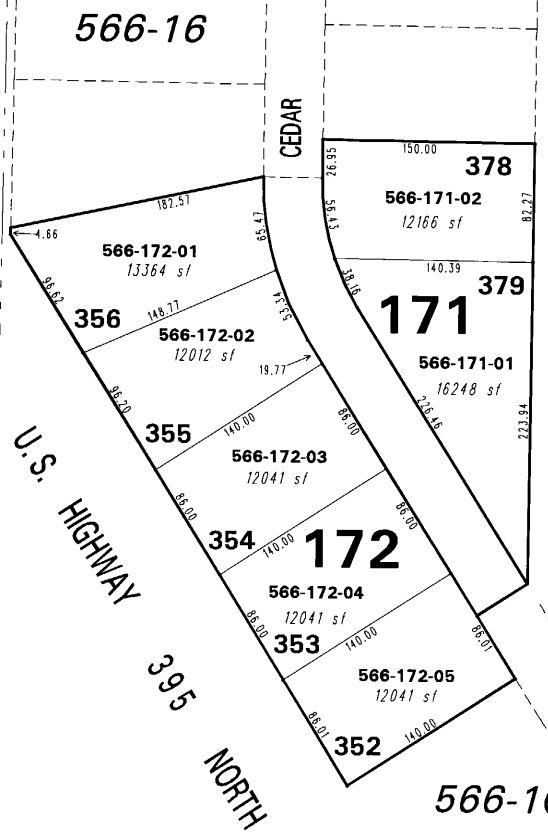


STATE OF CALIFORNIA (SIERRA COUNTY)

566-14

566-17

**(#4518)
CANYON HILLS - UNIT 3**
POR. OF THE NE 1/4 OF SEC. 19
T21N - 18E



566-13

566-11

566-10

087-04

U.S. HIGHWAY 395 NORTH

CEDAR MOUNTAIN DRIVE

THUNDER RIVER

SAPPHIRE CANYON COURT

COLD SPRINGS DRIVE

CEDAR MOUNTAIN DRIVE

MESQUITE AVE.

NOTE: This map is prepared for the use of the Washoe County Assessor for assessment and illustrative purposes only. It does not represent a survey of the premises. No liability is assumed as to the sufficiency or the accuracy of the data delineated hereon.

Office of Washoe County Assessor, Nevada - Robert W. McGowan

This area previously shown on 566-12

NOTE: Areas of parcels which are less than 2 acres are shown in square feet.

Drawn by PK 08/22/05
 Revised _____

