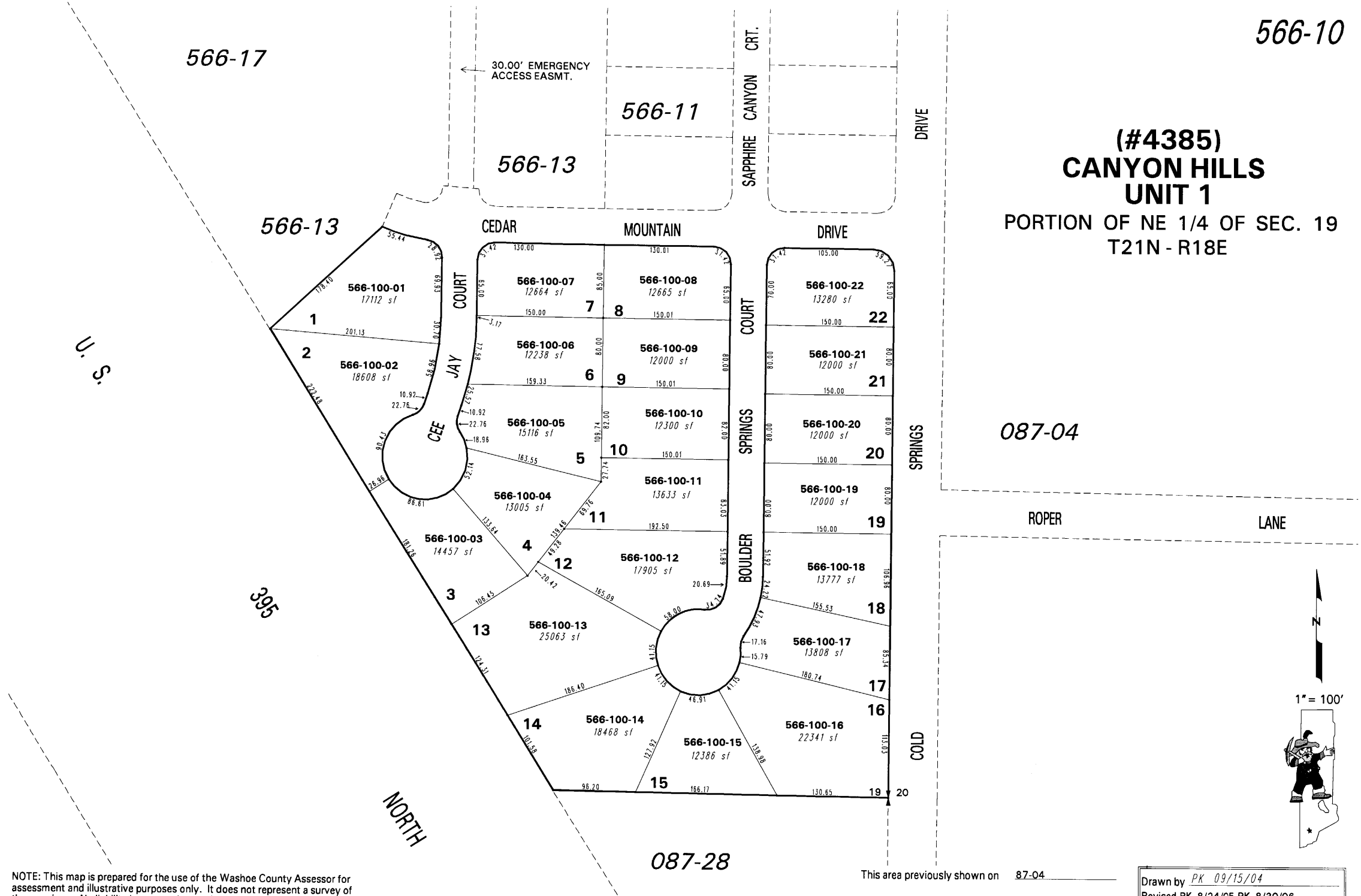


**(#4385)
CANYON HILLS
UNIT 1**
PORTION OF NE 1/4 OF SEC. 19
T21N - R18E



NOTE: This map is prepared for the use of the Washoe County Assessor for assessment and illustrative purposes only. It does not represent a survey of the premises. No liability is assumed as to the sufficiency or the accuracy of the data delineated hereon.

Office of Washoe County Assessor, Nevada - Robert W. McGowan

This area previously shown on 87-04

NOTE: Areas of parcels which are less than 2 acres are shown in square feet.

Drawn by PK 09/15/04
Revised PK 8/24/05 PK 8/30/06