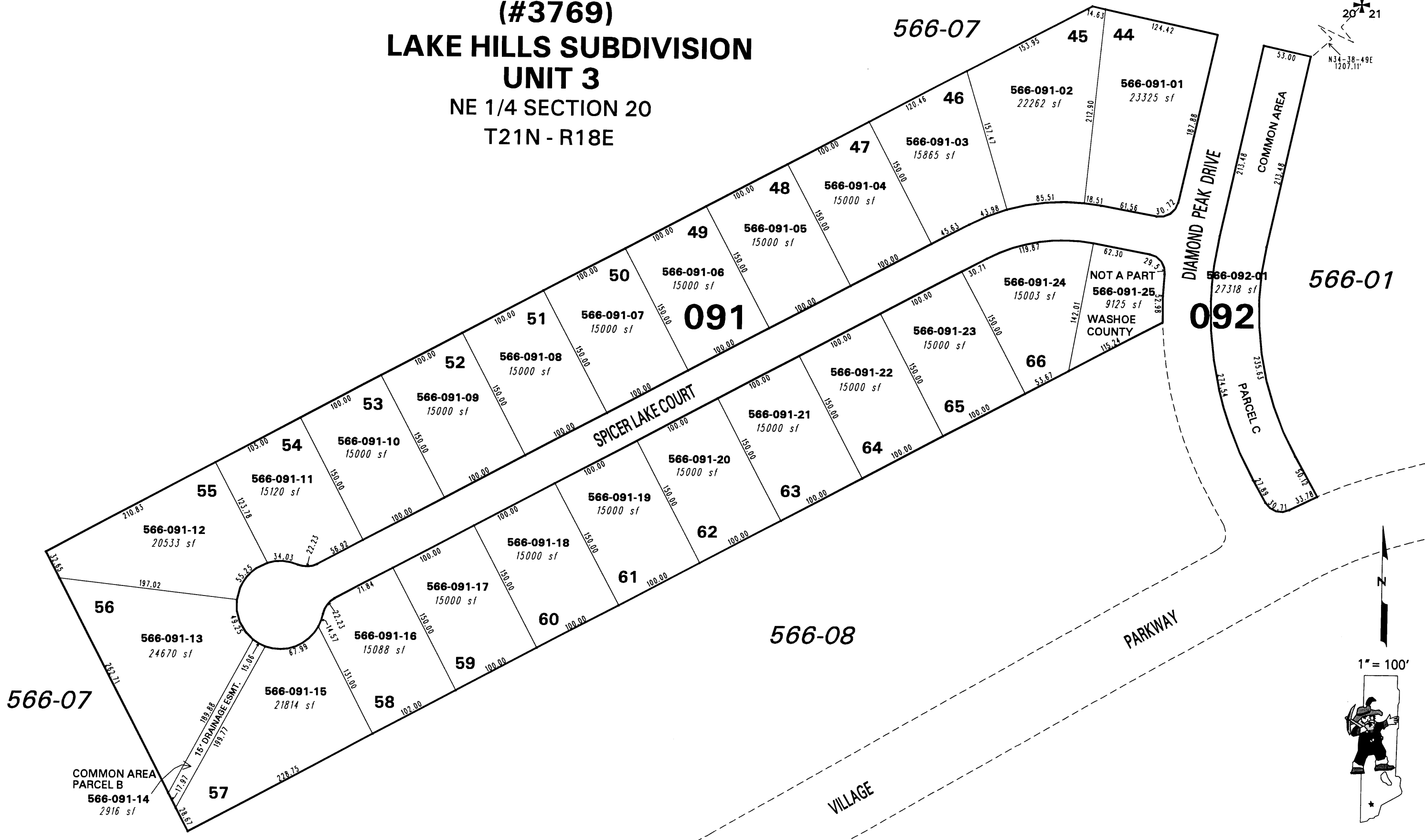
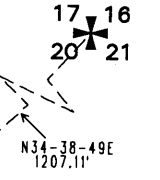


566-09

(#3769)  
LAKE HILLS SUBDIVISION  
UNIT 3  
NE 1/4 SECTION 20  
T21N - R18E



566-01

566-07

566-08

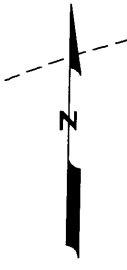
NOTE: This map is prepared for the use of the Washoe County Assessor for assessment and illustrative purposes only. It does not represent a survey of the premises. No liability is assumed as to the sufficiency or the accuracy of the data delineated hereon.

Office of Washoe County Assessor, Nevada - Robert W. McGowan

This area previously shown on 566-01

NOTE: Areas of parcels which are less than 2 acres are shown in square feet.

Drawn by DSR 11/30/99  
Revised TWT 9/4/02 HCS 10/8/02



1" = 100'

