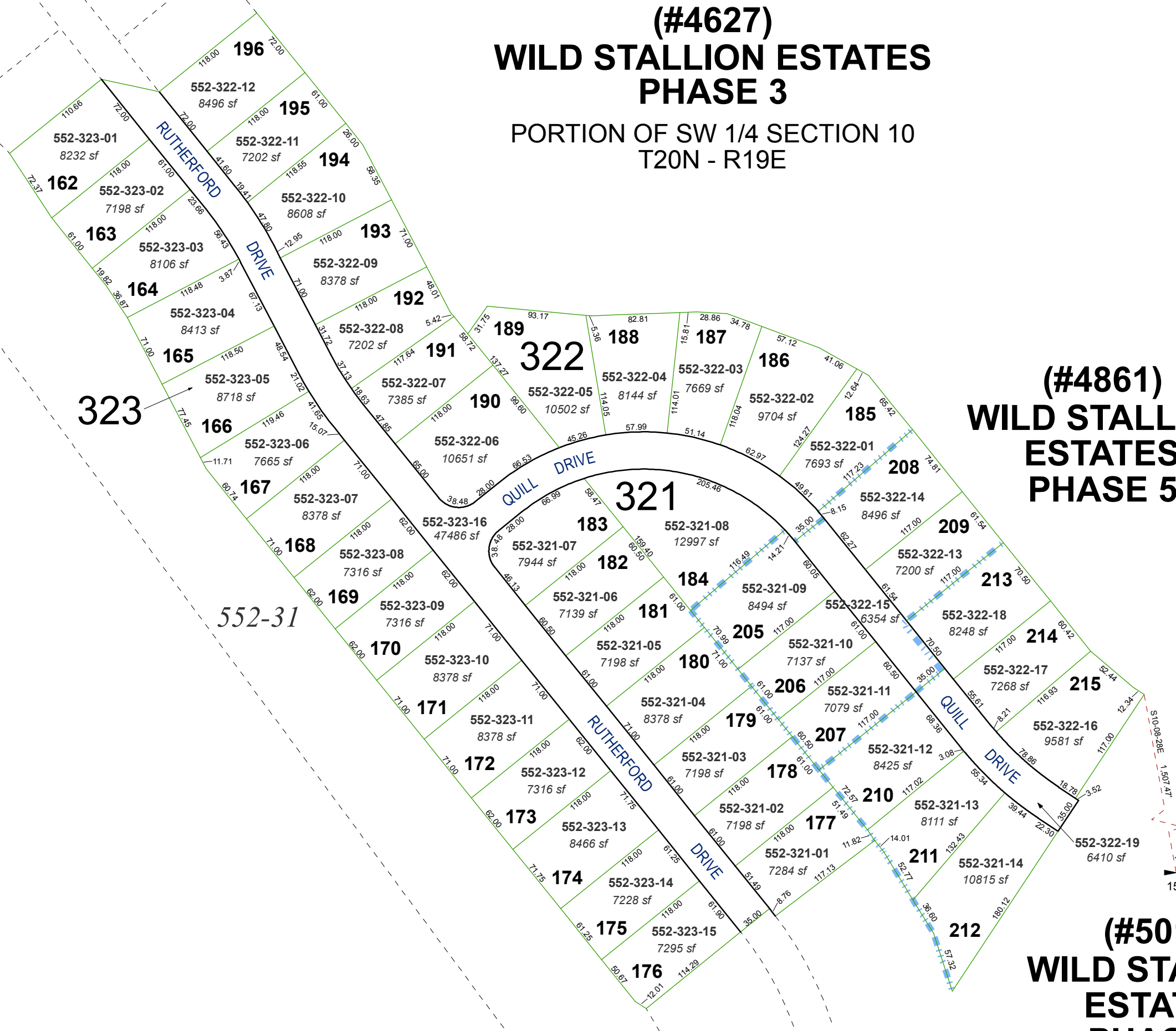


**(#4627)
WILD STALLION ESTATES
PHASE 3**

PORTION OF SW 1/4 SECTION 10
T20N - R19E

**(#4861)
WILD STALLION
ESTATES
PHASE 5**

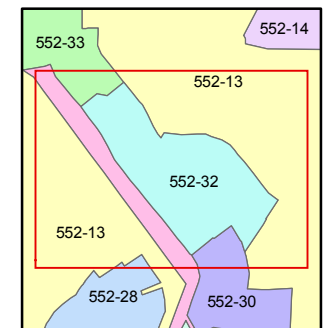
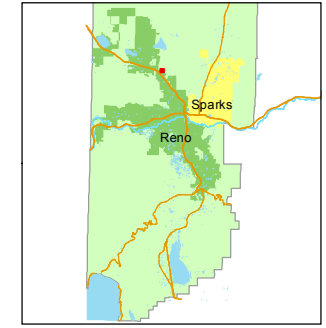
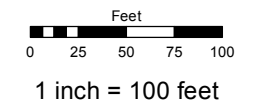
**(#5011)
WILD STALLION
ESTATES
PHASE 6**



Assessor's Map Number
552-32

STATE OF NEVADA
WASHOE COUNTY
ASSESSOR'S OFFICE
Joshua G. Wilson, Assessor

1001 East Ninth Street
Building D
Reno, Nevada 89512
(775) 328-2231



created by: KSB 3/22/11
last updated: KSB 3/26/12

area previously shown on map(s)
552-13

NOTE: This map was prepared for the use of the Washoe County Assessor for assessment and illustrative purposes only. It does not represent a survey of the premises. No liability is assumed as to the sufficiency or accuracy of the data delineated herein.