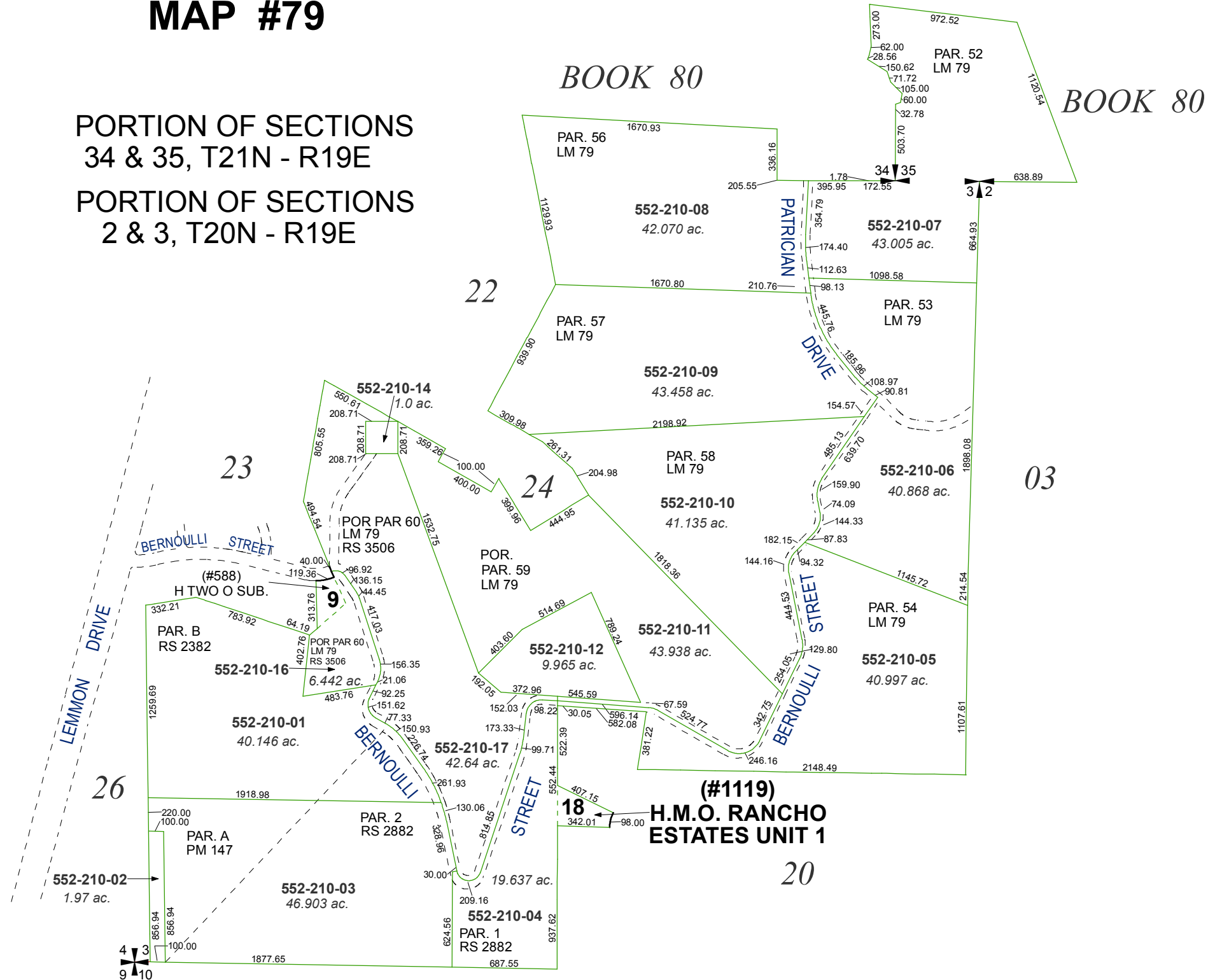


DIVISION OF LAND MAP #79

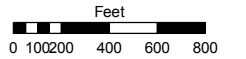
PORTION OF SECTIONS
34 & 35, T21N - R19E
PORTION OF SECTIONS
2 & 3, T20N - R19E



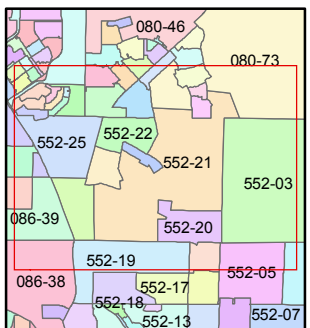
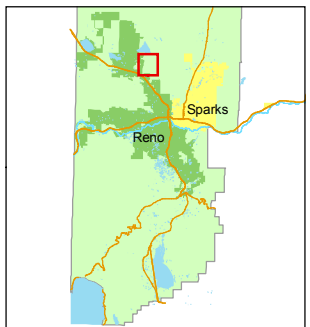
Assessor's Map Number
552-21

STATE OF NEVADA
WASHOE COUNTY
ASSESSOR'S OFFICE
Joshua G. Wilson, Assessor

1001 East Ninth Street
Building D
Reno, Nevada 89512
(775) 328-2231



1 inch = 800 feet



created by: CFB 09/08/2010

last updated: _____

area previously shown on map(s)

NOTE: This map was prepared for the use of the Washoe County Assessor for assessment and illustrative purposes only. It does not represent a survey of the premises. No liability is assumed as to the sufficiency or accuracy of the data delineated hereon.