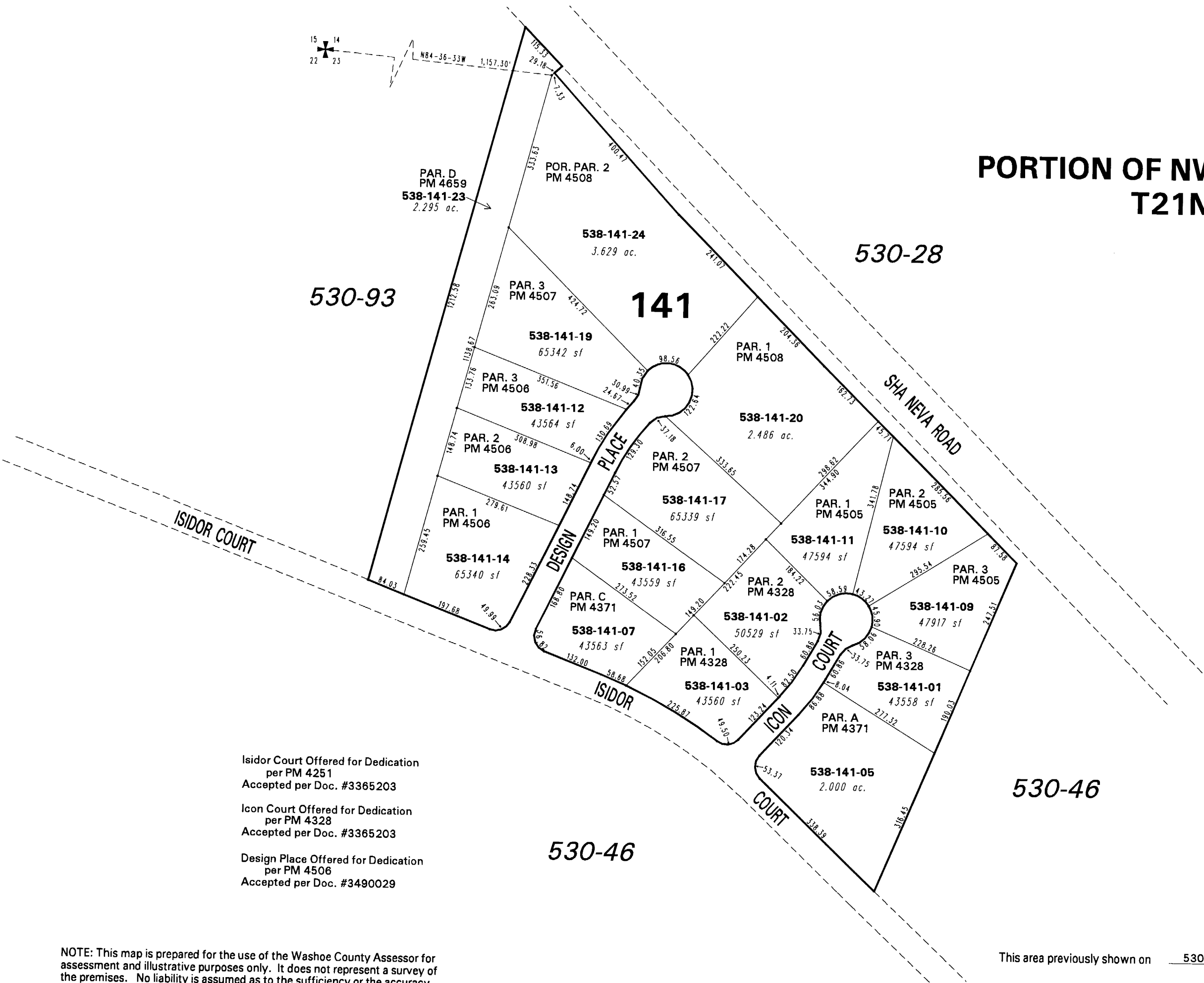


PORTION OF NW 1/4 SECTION 23 T21N - R20E



Isidor Court Offered for Dedication
per PM 4251
Accepted per Doc. #3365203

Icon Court Offered for Dedication
per PM 4328
Accepted per Doc. #3365203

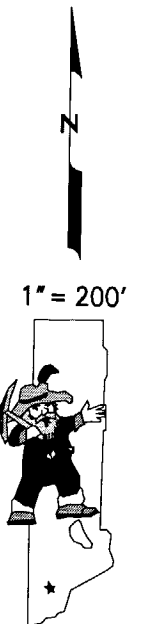
Design Place Offered for Dedication
per PM 4506
Accepted per Doc. #3490029

Office of Washoe County Assessor, Nevada - Joshua G. Wilson

This area previously shown on 530-46

NOTE: Areas of parcels which are less than 2 acres are shown in square feet.

Drawn by KSB 03/30/05
 Revised KSB 5/09/06 KSB 10/30/06
KSB 2/16/07



NOTE: This map is prepared for the use of the Washoe County Assessor for assessment and illustrative purposes only. It does not represent a survey of the premises. No liability is assumed as to the sufficiency or the accuracy of the data delineated hereon.