

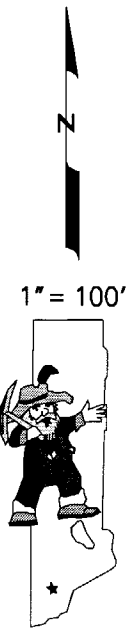
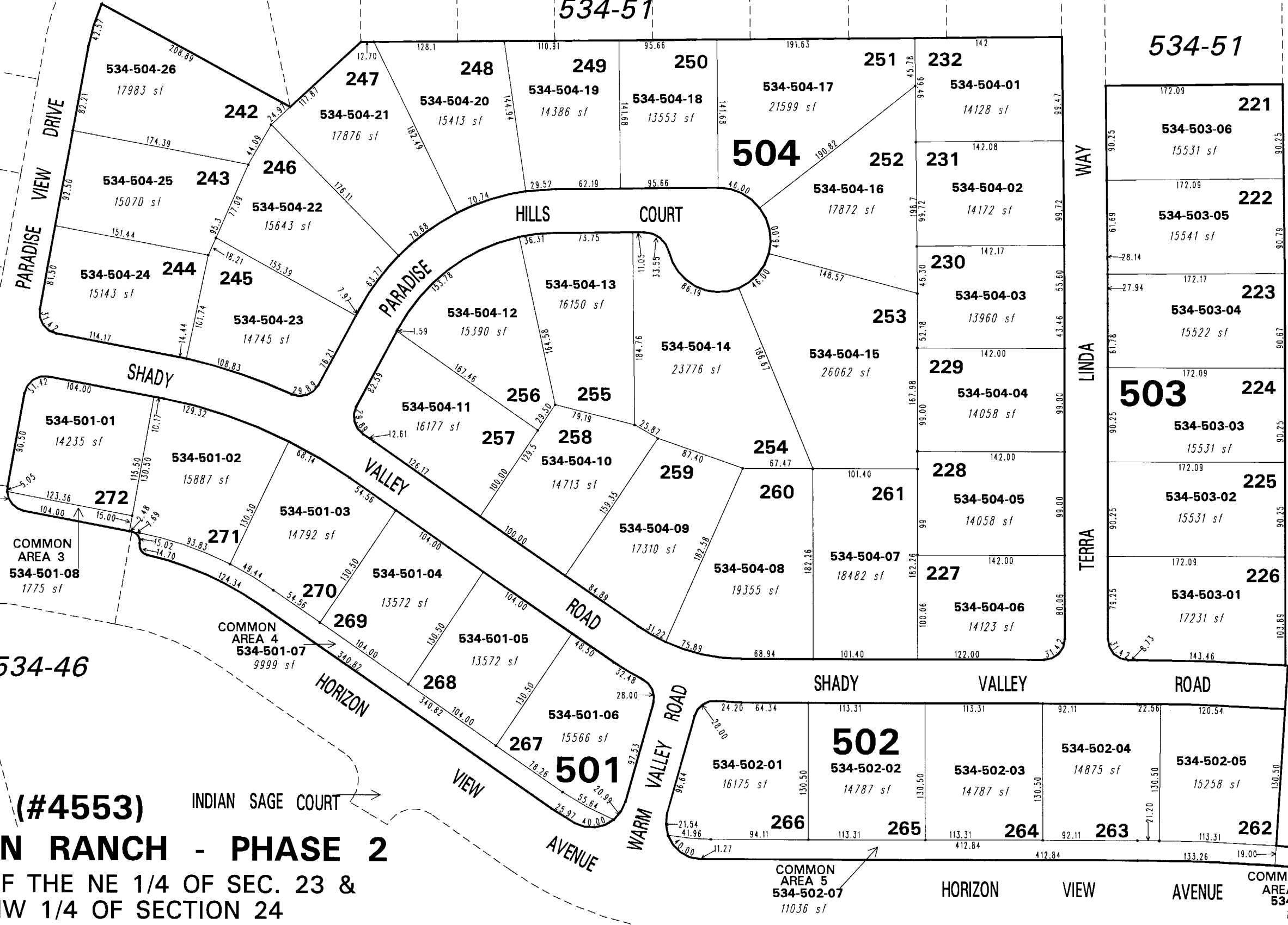
534-45

534-51

534-51

534-51

534-45



**(#4553)**  
**DONOVAN RANCH - PHASE 2**  
 PORTION OF THE NE 1/4 OF SEC. 23 &  
 THE NW 1/4 OF SECTION 24  
 T21N - R20E

\* STREETS ARE PARCELED ON PAGE 45.

NOTE: This map is prepared for the use of the Washoe County Assessor for assessment and illustrative purposes only. It does not represent a survey of the premises. No liability is assumed as to the sufficiency or the accuracy of the data delineated hereon.

Office of Washoe County Assessor, Nevada - Joshua G. Wilson

This area previously shown on 534-45

NOTE: Areas of parcels which are less than 2 acres are shown in square feet.

Drawn by PK 11/14/05  
 Revised NLH 04/06/07