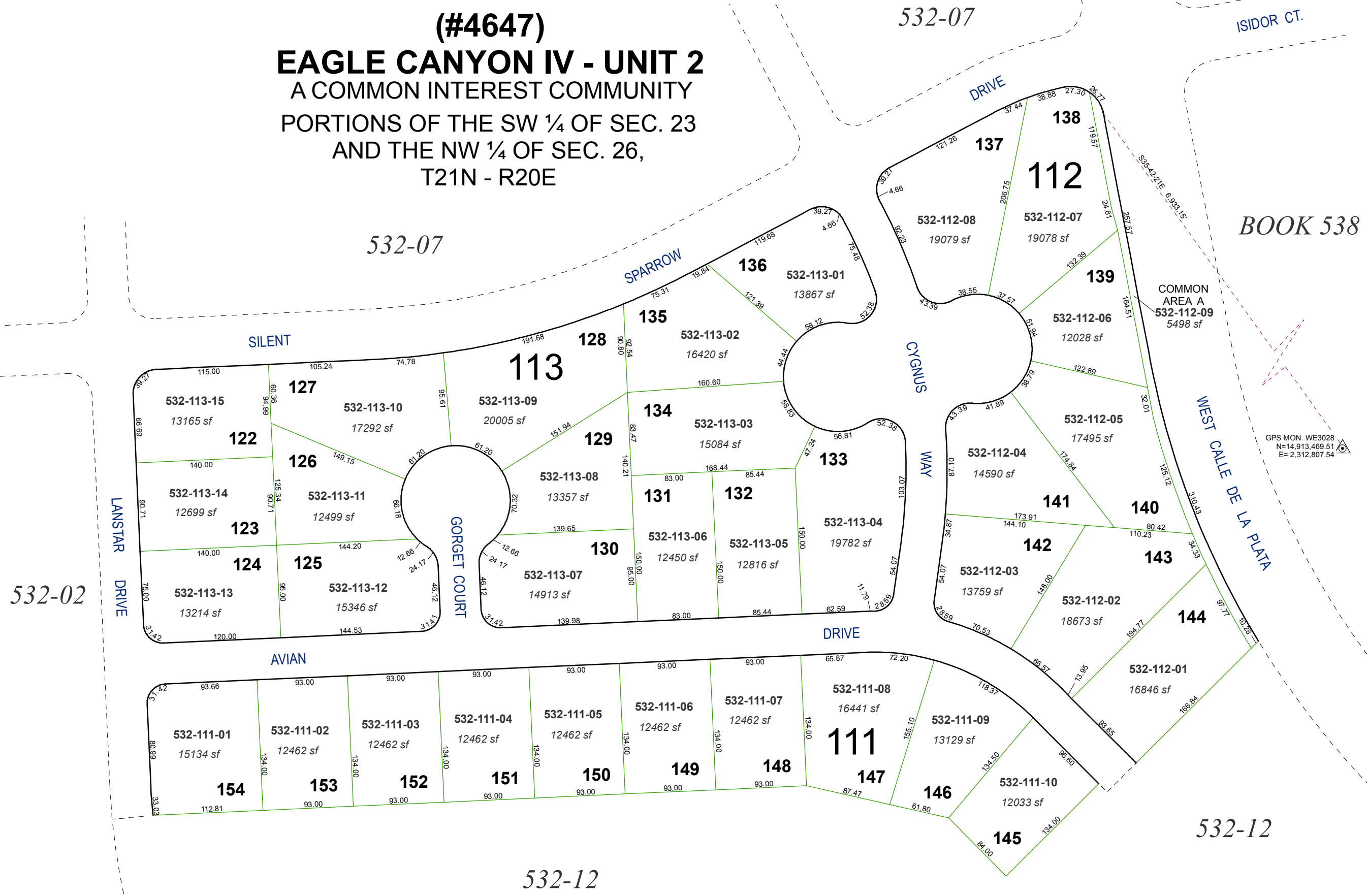


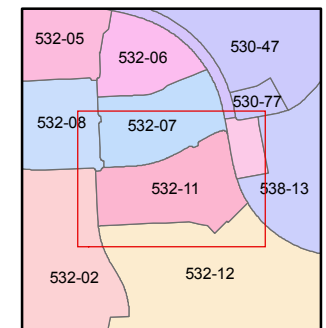
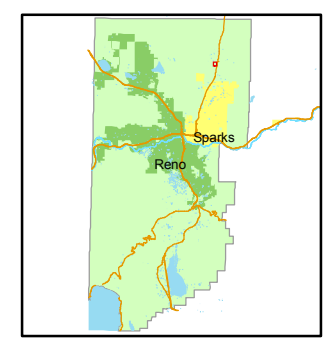
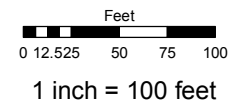
(#4647)
EAGLE CANYON IV - UNIT 2
 A COMMON INTEREST COMMUNITY
 PORTIONS OF THE SW ¼ OF SEC. 23
 AND THE NW ¼ OF SEC. 26,
 T21N - R20E



Assessor's Map Number
532-11

STATE OF NEVADA
WASHOE COUNTY
 ASSESSOR'S OFFICE
 Joshua G. Wilson, Assessor

1001 East Ninth Street
 Building D
 Reno, Nevada 89512
 (775) 328-2231



created by: NLH 6/25/2010
 last updated: _____
 area previously shown on map(s)
532-02

NOTE: This map was prepared for the use of the Washoe County Assessor for assessment and illustrative purposes only. It does not represent a survey of the premises. No liability is assumed as to the sufficiency or accuracy of the data delineated hereon.