

Medical Way Offered for Dedication
per Doc. #3608388

Assessor's Map Number

532-03

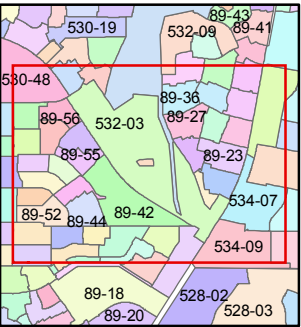
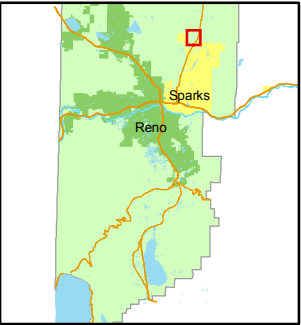
STATE OF NEVADA
WASHOE COUNTY
ASSESSOR'S OFFICE
Joshua G. Wilson, Assessor

1001 East Ninth Street
Building D
Reno, Nevada 89512
(775) 328-2231



Feet
0 125 250 375 500

1 inch = 500 feet



created by: KSB 1/28/10

last updated: _____

area previously shown on map(s)

89-15, 89-46, 530-28

NOTE: This map was prepared for the use of the Washoe County Assessor for assessment and illustrative purposes only. It does not represent a survey of the premises. No liability is assumed as to the sufficiency or accuracy of the data delineated hereon.