

DESERT FOX DRIVE

527-05

527-14

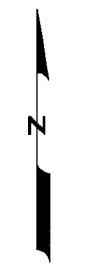
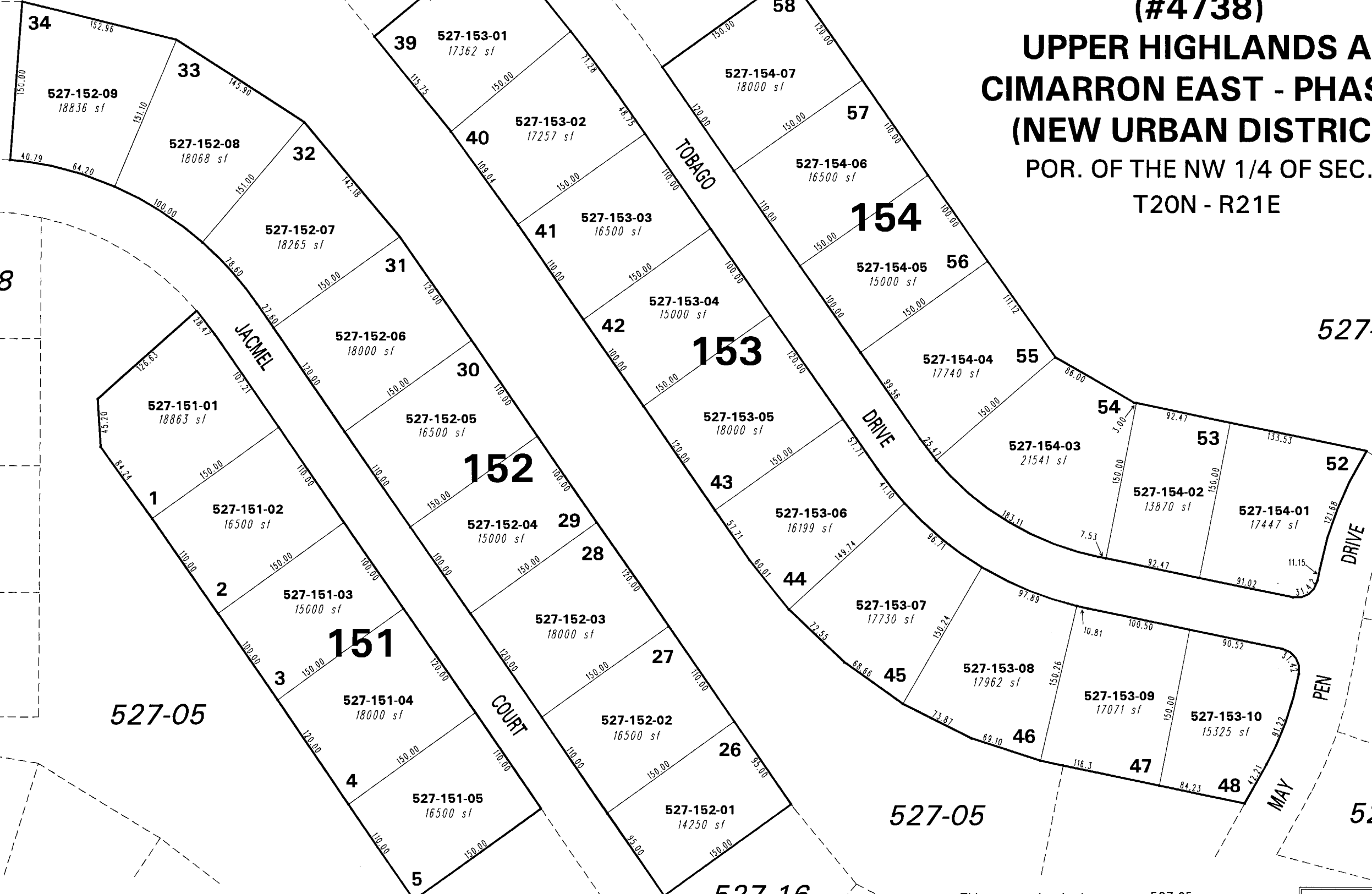
(#4738)

# UPPER HIGHLANDS AT CIMARRON EAST - PHASE 3 (NEW URBAN DISTRICT)

POR. OF THE NW 1/4 OF SEC. 5, T20N - R21E

527-08

527-05



1" = 100'



NOTE: This map is prepared for the use of the Washoe County Assessor for assessment and illustrative purposes only. It does not represent a survey of the premises. No liability is assumed as to the sufficiency or the accuracy of the data delineated hereon.

Office of Washoe County Assessor, Nevada - Joshua G. Wilson

This area previously shown on 527-05

NOTE: Areas of parcels which are less than 2 acres are shown in square feet.

Drawn by	NLH 01/29/07
Revised	