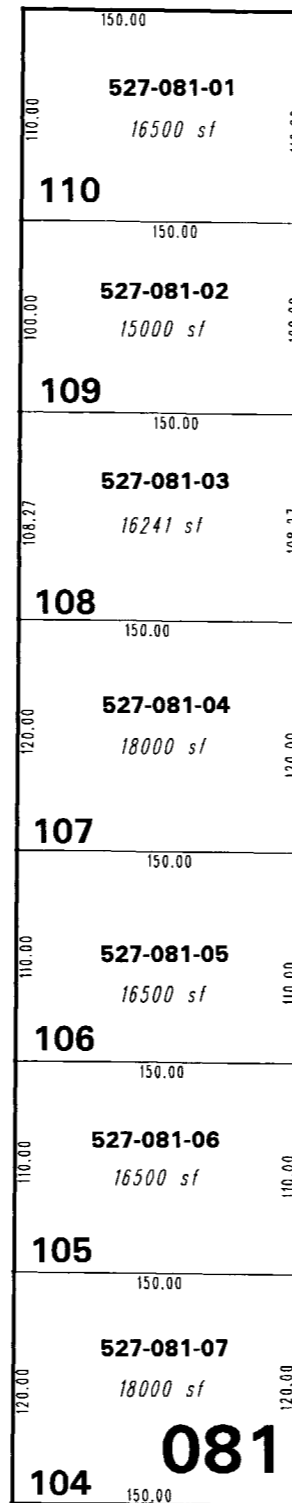
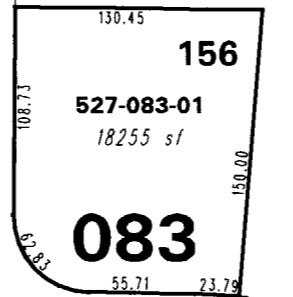


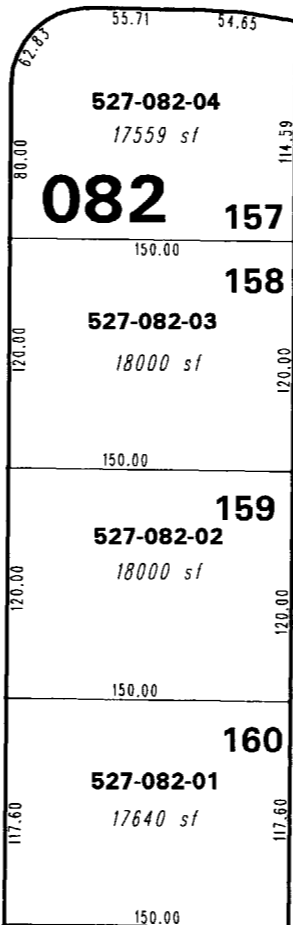
527-07



084-57



JACMEL COURT



527-05

**(#4450)
UPPER HIGHLANDS AT
CIMARRON EAST - PHASE 1
(NEW URBAN DISTRICT)
PORTION OF THE W 1/2 OF SEC. 5
T20N - R21E**

DRIVE
FOX
DESERT

527-09

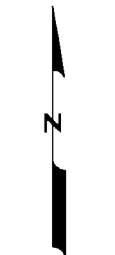
NOTE: This map is prepared for the use of the Washoe County Assessor for assessment and illustrative purposes only. It does not represent a survey of the premises. No liability is assumed as to the sufficiency or the accuracy of the data delineated hereon.

Office of Washoe County Assessor, Nevada - Robert W. McGowan

This area previously shown on Q84-40

NOTE: Areas of parcels which are less than 2 acres are shown in square feet.

Drawn by PK 03/17/05
Revised _____



1" = 100'

