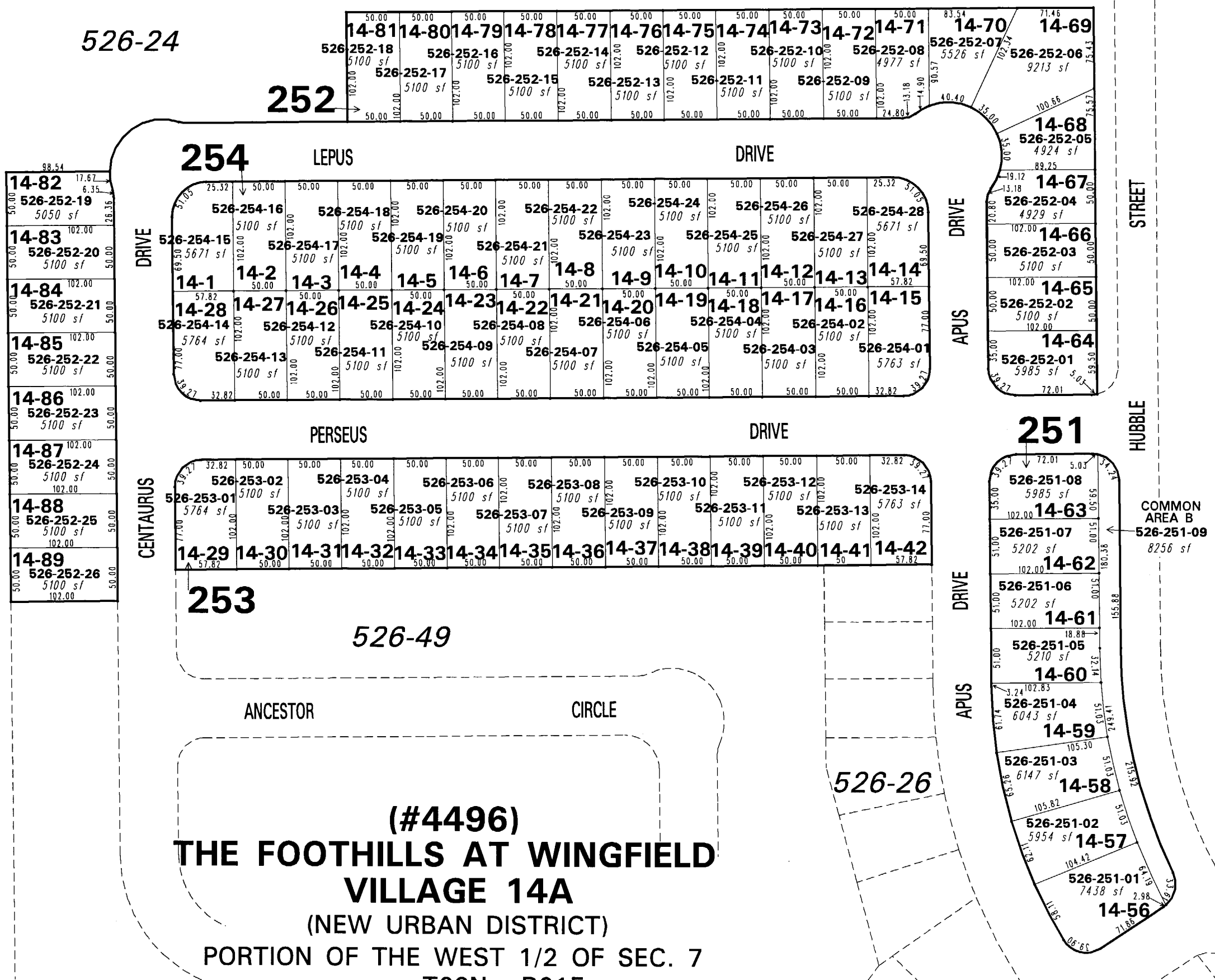


526-24

526-59



(#4496)
THE FOOTHILLS AT WINGFIELD VILLAGE 14A
 (NEW URBAN DISTRICT)
 PORTION OF THE WEST 1/2 OF SEC. 7
 T20N - R21E

NOTE: This map is prepared for the use of the Washoe County Assessor for assessment and illustrative purposes only. It does not represent a survey of the premises. No liability is assumed as to the sufficiency or the accuracy of the data delineated hereon.

Office of Washoe County Assessor, Nevada - Robert W. McGowan

This area previously shown on 526-01

NOTE: Areas of parcels which are less than 2 acres are shown in square feet.

Drawn by PK 07/18/05
 Revised PK 4/11/06 PK 6/28/06

