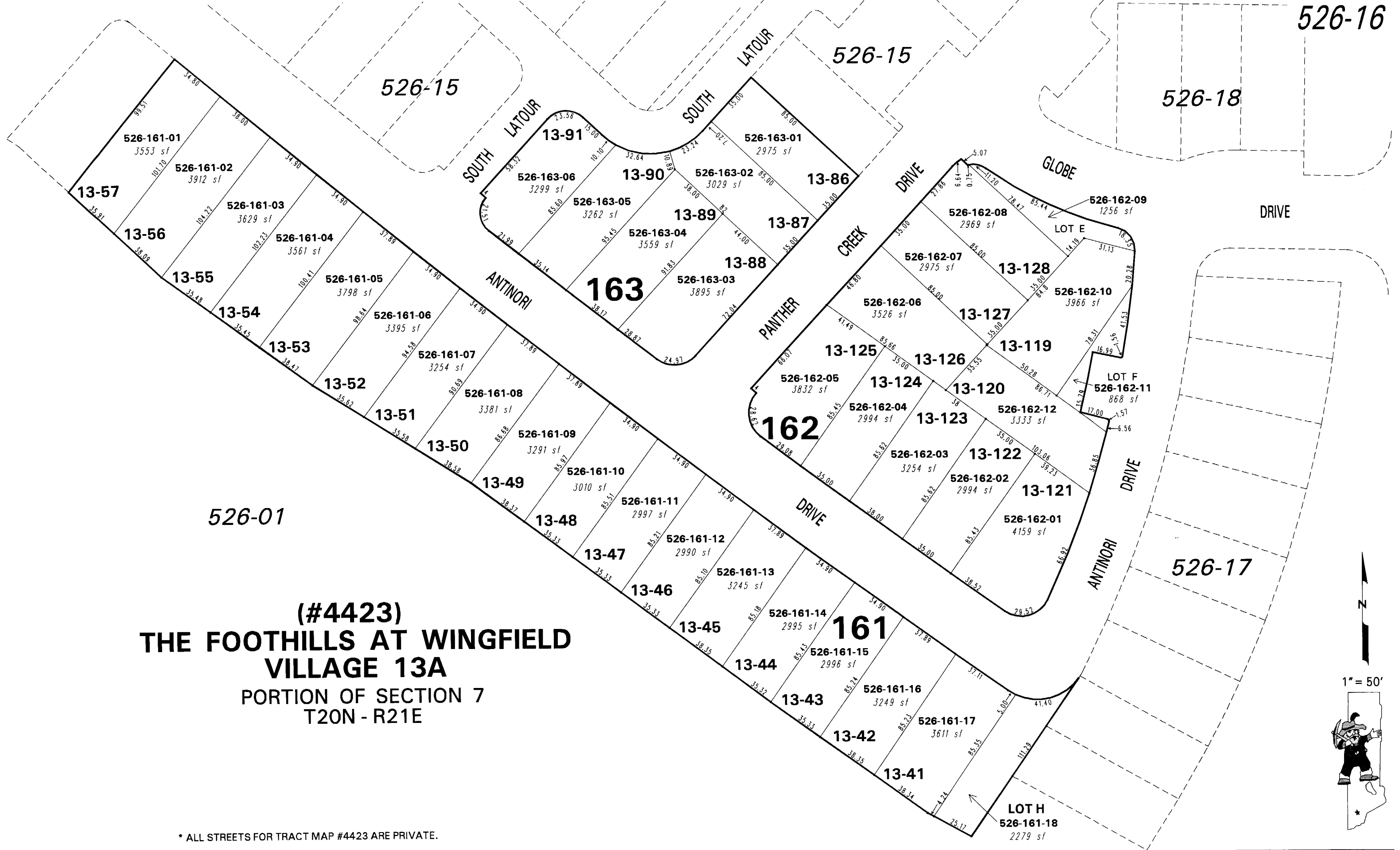


526-16

526-15

526-15

526-18



526-01

**(#4423)  
THE FOOTHILLS AT WINGFIELD  
VILLAGE 13A  
PORTION OF SECTION 7  
T20N - R21E**

\* ALL STREETS FOR TRACT MAP #4423 ARE PRIVATE.

NOTE: This map is prepared for the use of the Washoe County Assessor for assessment and illustrative purposes only. It does not represent a survey of the premises. No liability is assumed as to the sufficiency or the accuracy of the data delineated herein.

Office of Washoe County Assessor, Nevada - Robert W. McGowan

This area previously shown on 526-01

NOTE: Areas of parcels which are less than 2 acres are shown in square feet.

Drawn by PK 01/11/05  
Revised \_\_\_\_\_

1" = 50'

