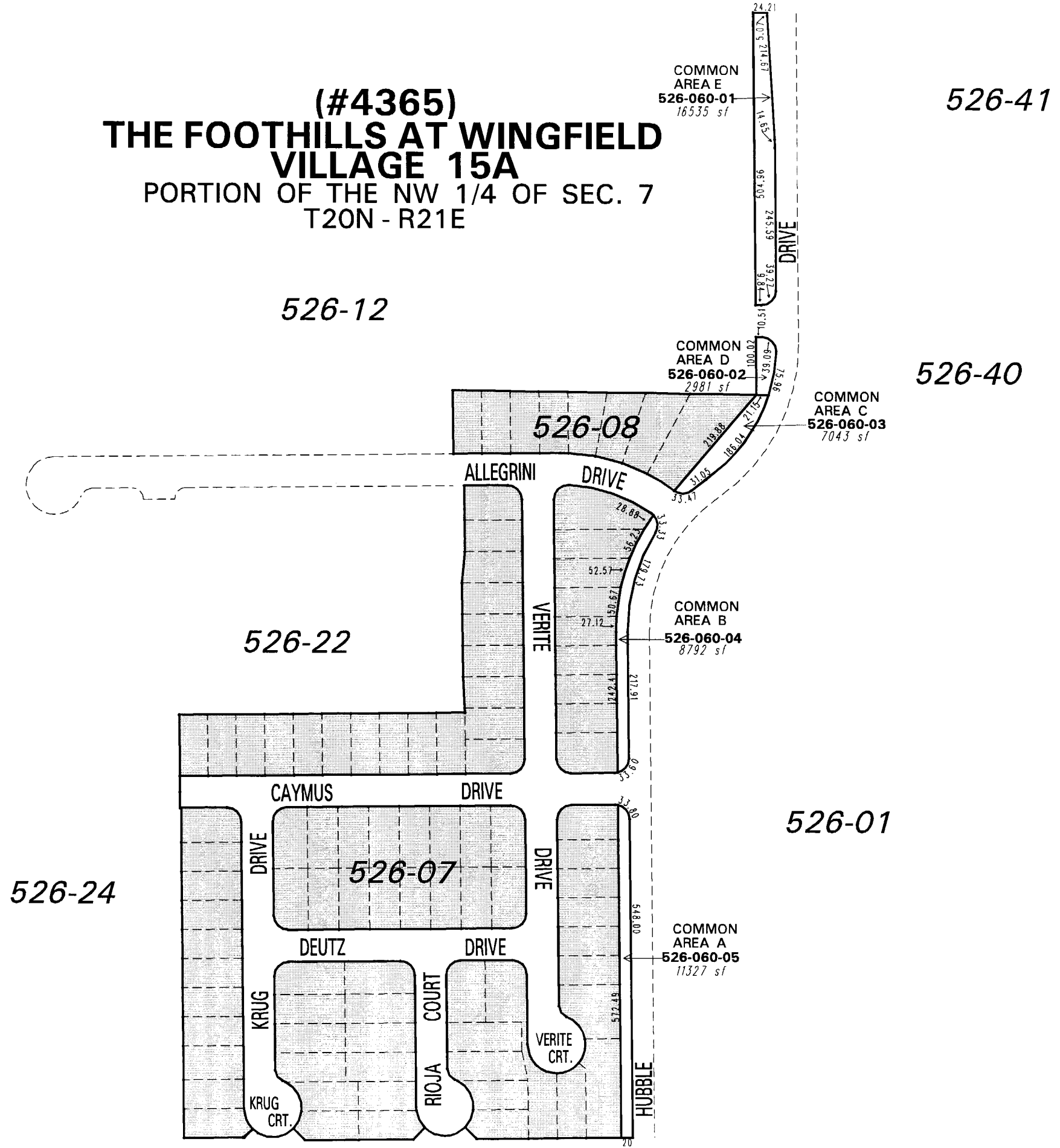


(#4365)
THE FOOTHILLS AT WINGFIELD VILLAGE 15A
PORTION OF THE NW 1/4 OF SEC. 7
T20N - R21E



526-01

526-22

526-08

526-12

526-41

526-40

526-24

526-07

526-24

NOTE: This map is prepared for the use of the Washoe County Assessor for assessment and illustrative purposes only. It does not represent a survey of the premises. No liability is assumed as to the sufficiency or the accuracy of the data delineated hereon.

Office of Washoe County Assessor, Nevada - Robert W. McGowan

This area previously shown on 084-56

NOTE: Areas of parcels which are less than 2 acres are shown in square feet.

Drawn by	PK 07/16/04
Revised PK	8/2/05 PK 1/20/06
PK	1/20/06

