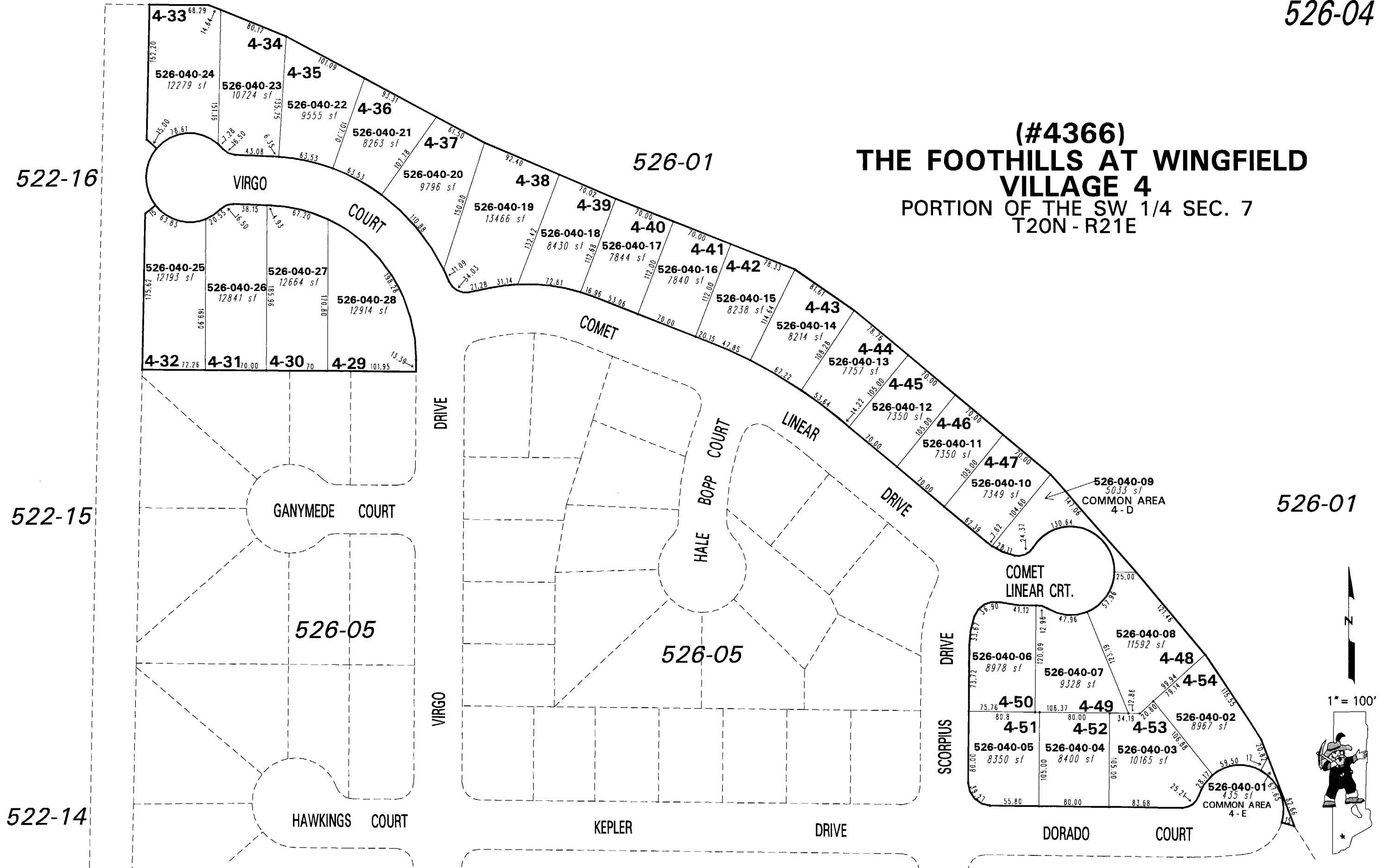


(#4366)  
**THE FOOTHILLS AT WINGFIELD  
VILLAGE 4**  
PORTION OF THE SW 1/4 SEC. 7  
T20N - R21E



NOTE: This map is prepared for the use of the Washoe County Assessor for assessment and illustrative purposes only. It does not represent a survey of the premises. No liability is assumed as to the sufficiency or the accuracy of the data delineated hereon.

Office of Washoe County Assessor, Nevada - Robert W. McGowan

This area previously shown on 084-56,526-01

NOTE: Areas of parcels which are less than 2 acres are shown in square feet.

Drawn by	PK 07/15/04
Revised	