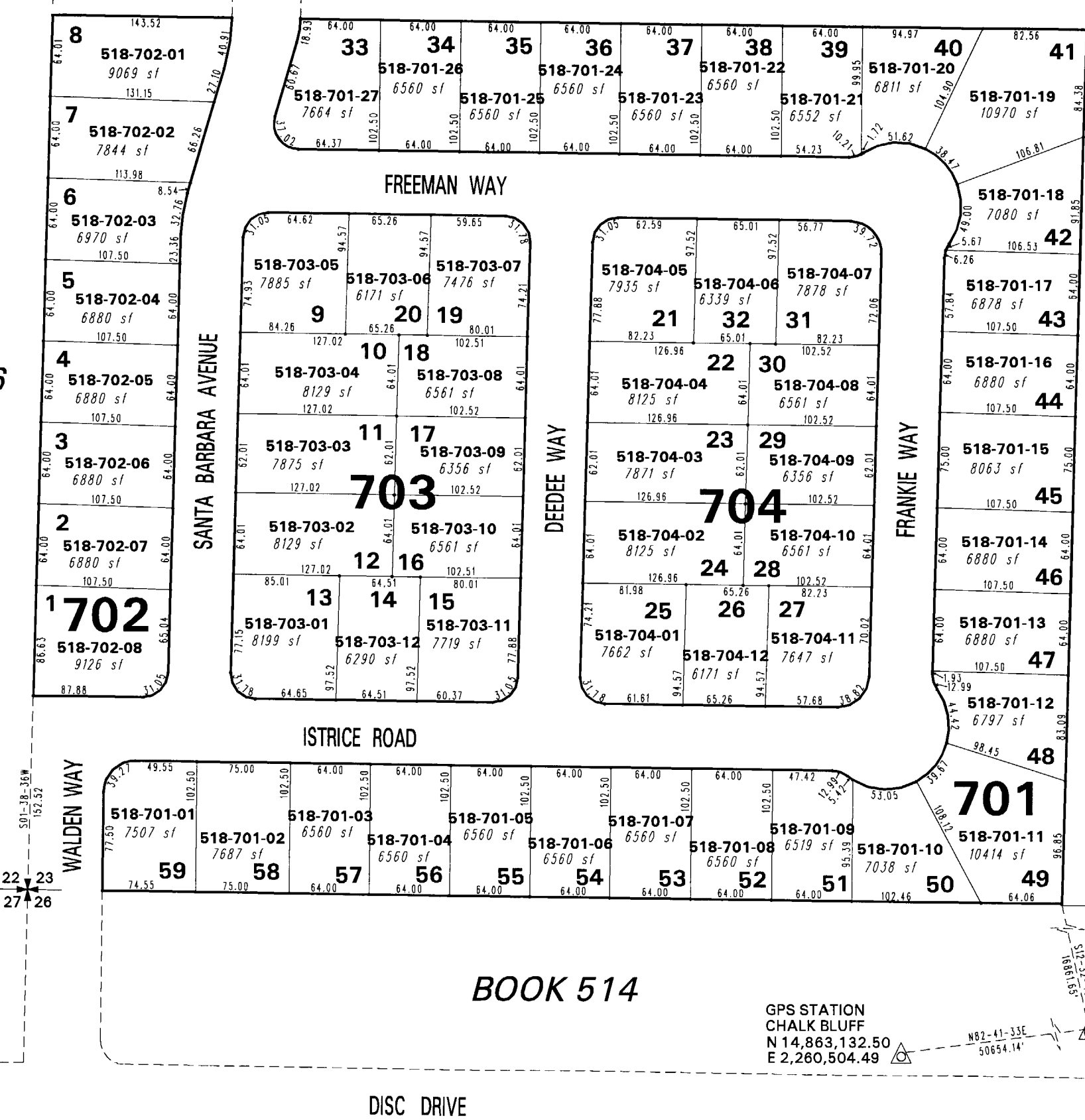


(#4118)  
SILVIO ESTATES  
POR. SW 1/4 SECTION 23  
T20N - R20E

BOOK 516

518-21

BOOK 514



GPS STATION  
CHALK BLUFF  
N 14,863,132.50  
E 2,260,504.49

GPS STATION  
VISTA 2  
N 14,869,575.42  
E 2,310,747.21

NOTE: This map is prepared for the use of the Washoe County Assessor for assessment and illustrative purposes only. It does not represent a survey of the premises. No liability is assumed as to the sufficiency or the accuracy of the data delineated hereon.

Office of Washoe County Assessor, Nevada - Robert W. McGowan

This area previously shown on 518-13

NOTE: Areas of parcels which are less than 2 acres are shown in square feet.

Drawn by	HCS	10/03/02
Revised	KSB	7/19/04