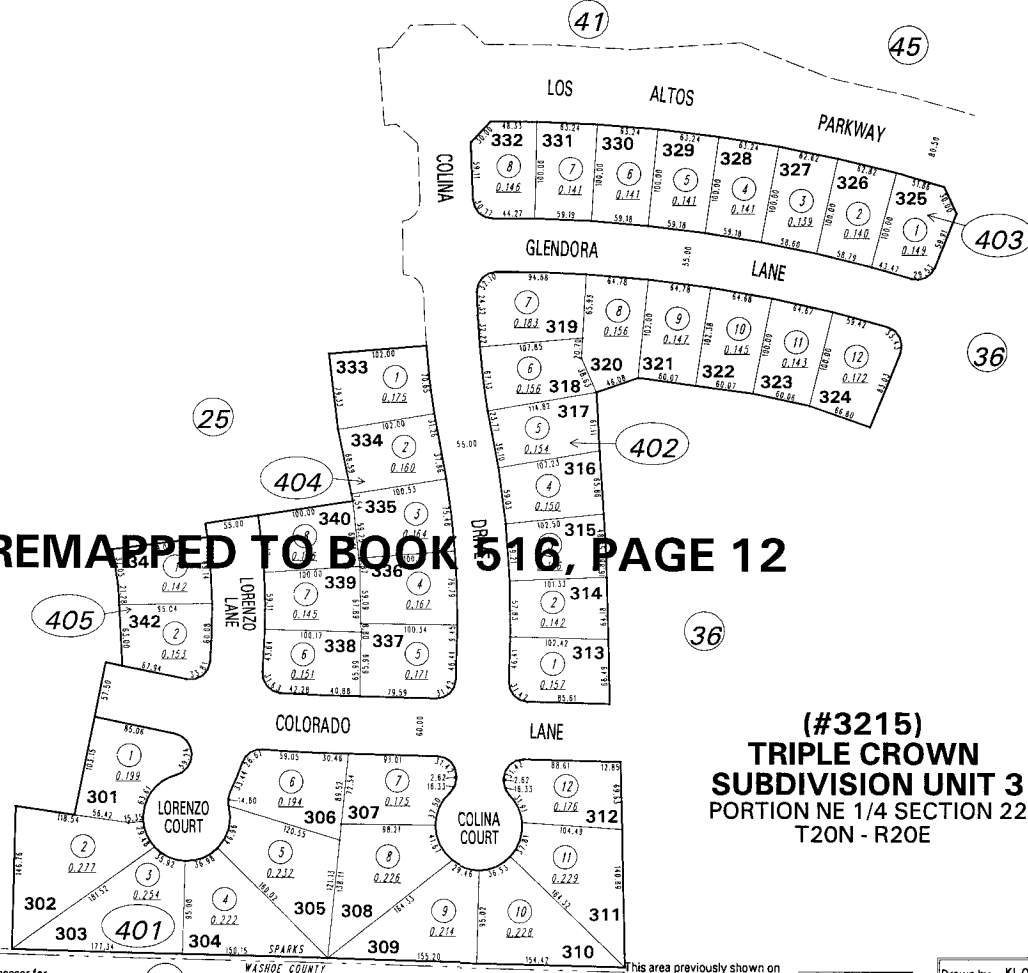


REMAPPED TO BOOK 516, PAGE 12

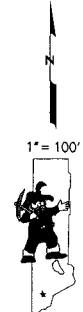


CENTER OF SECTION 22
 NAD 83
 GROUND COORD.
 N = 4,888,563.24
 E = 2,303,806.88
 446-33-35W 346.52'

NOTE: This map is prepared for the use of the Washoe County Assessor for assessment and illustrative purposes only. It does not represent a survey of the premises. No liability is assumed as to the sufficiency or the accuracy of the data delineated hereon.

Office of Washoe County Assessor, Nevada - Robert W. McGowan

(#3215)
 TRIPLE CROWN
 SUBDIVISION UNIT 3
 PORTION NE 1/4 SECTION 22
 T20N - R20E



This area previously shown on _____
 NOTE:
 ASSESSOR'S BLOCK NUMBERS SHOWN IN ELLIPSES
 ASSESSOR'S PARCEL NUMBERS SHOWN IN CIRCLES

Drawn by KL 04/15/98
 Revised 5/98 10/98 11/98
 FEB 12/21/98