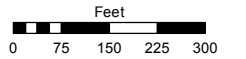
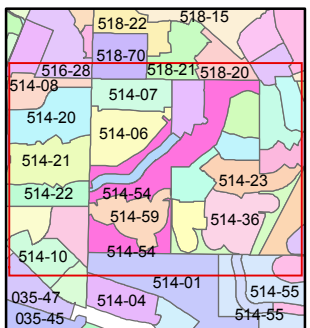
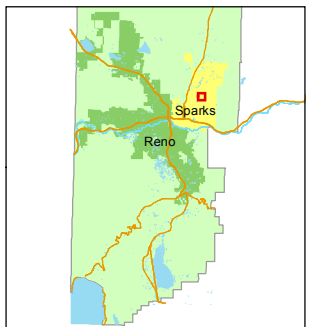


STATE OF NEVADA  
**WASHOE COUNTY**  
ASSESSOR'S OFFICE  
Joshua G. Wilson, Assessor

1001 East Ninth Street  
Building D  
Reno, Nevada 89512  
(775) 328-2231



1 inch = 300 feet



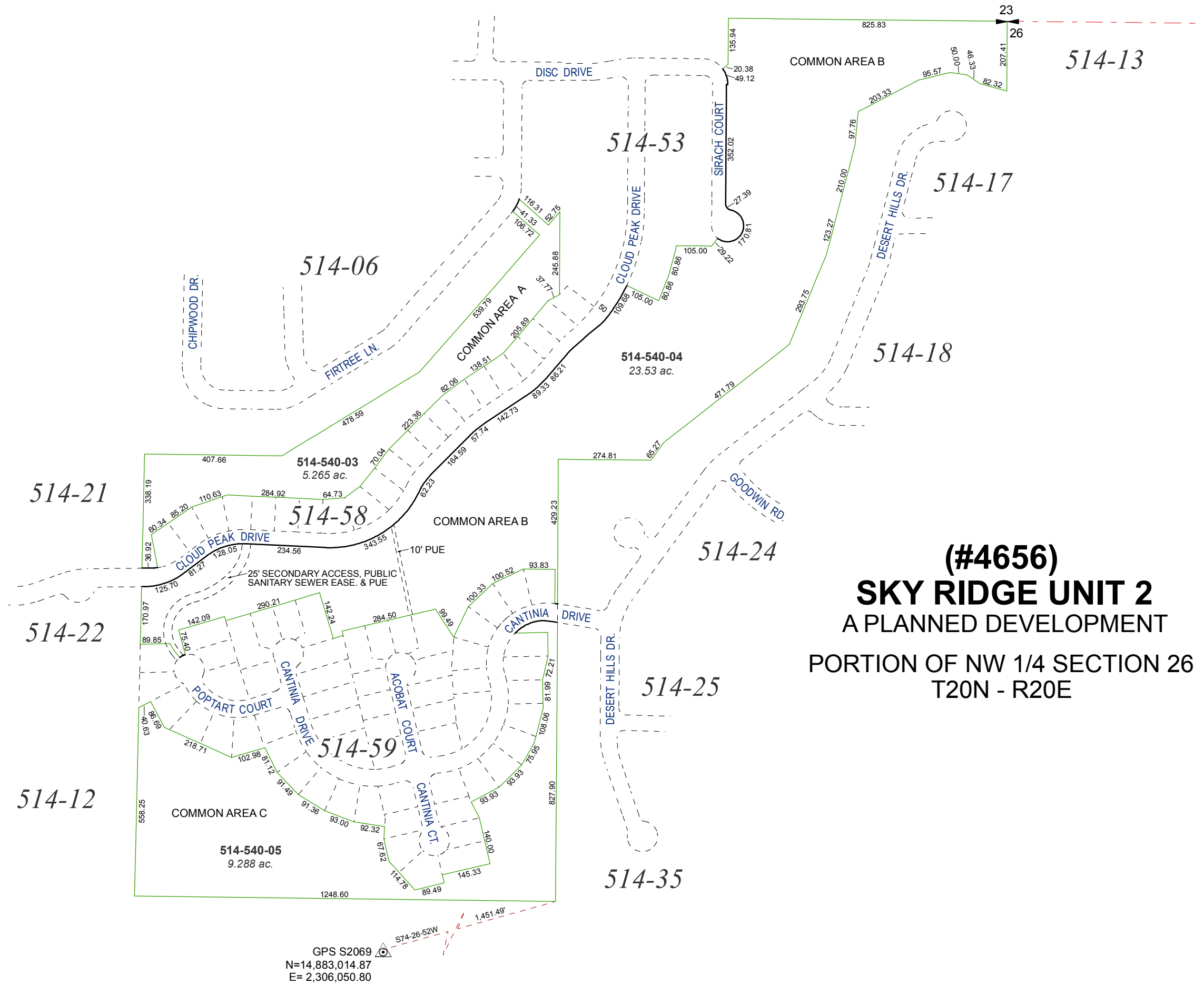
created by: KSB 12/27/11

last updated: \_\_\_\_\_

area previously shown on map(s)

514-01, 514-06

NOTE: This map was prepared for the use of the Washoe County Assessor for assessment and illustrative purposes only. It does not represent a survey of the premises. No liability is assumed as to the sufficiency or accuracy of the data delineated hereon.



GPS S2069  
N=14,883,014.87  
E= 2,306,050.80

**(#4656)**  
**SKY RIDGE UNIT 2**  
A PLANNED DEVELOPMENT  
PORTION OF NW 1/4 SECTION 26  
T20N - R20E