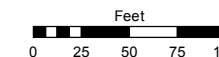
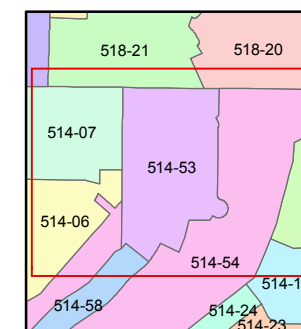
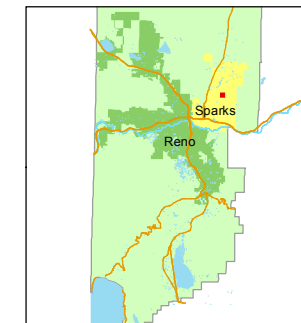


STATE OF NEVADA
WASHOE COUNTY
ASSESSOR'S OFFICE
Joshua G. Wilson, Assessor

1001 East Ninth Street
Building D
Reno, Nevada 89512
(775) 328-2231



1 inch = 100 feet



created by: KSB 12/27/11

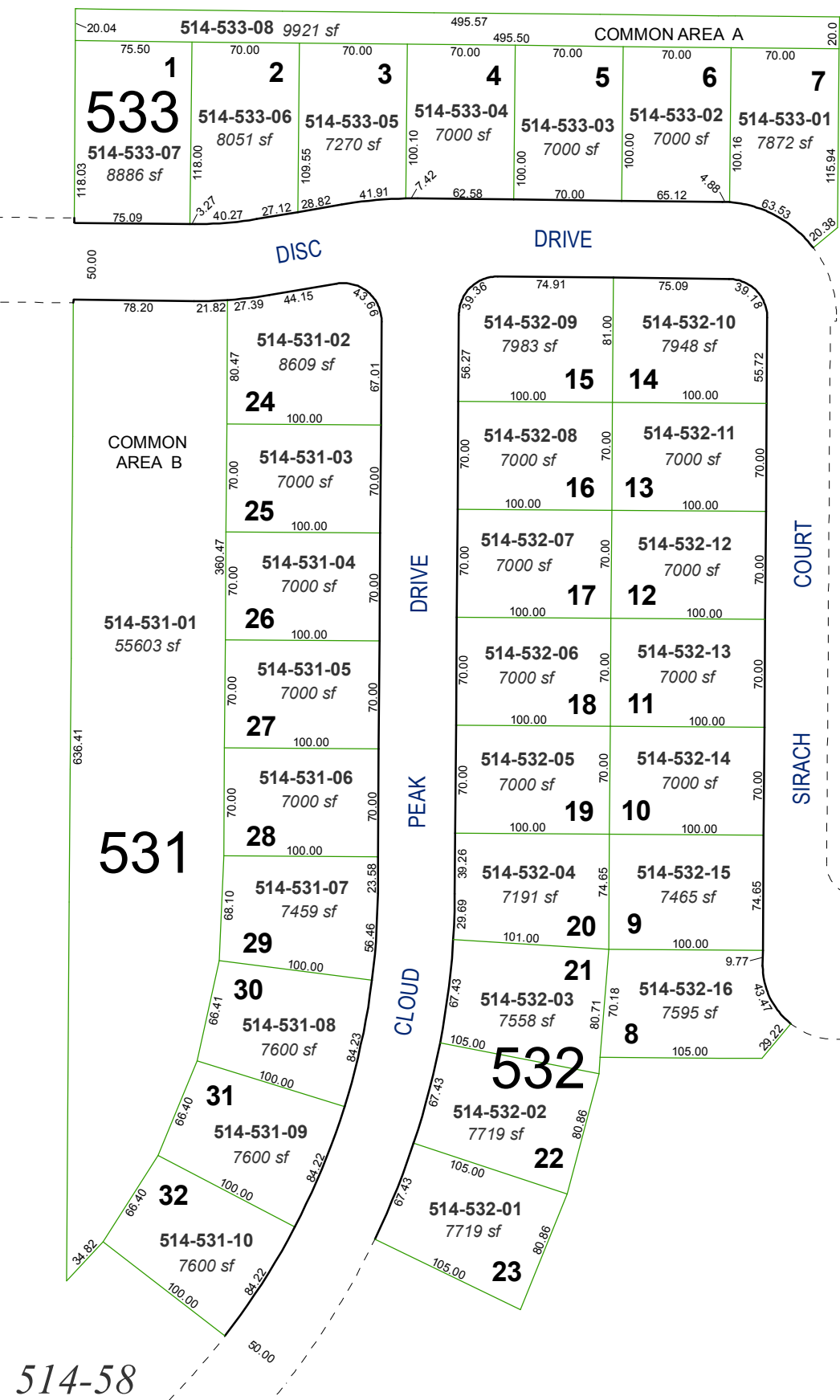
last updated: _____

area previously shown on map(s)

514-01

NOTE: This map was prepared for the use of the Washoe County Assessor for assessment and illustrative purposes only. It does not represent a survey of the premises. No liability is assumed as to the sufficiency or accuracy of the data delineated hereon.

(#4287)
SKY RIDGE UNIT 1
A PLANNED DEVELOPMENT
POR. NE 1/4 OF NW 1/4 SECTION 26
T20N - R20E



S89-23-27E 825.83' 23
26

514-58