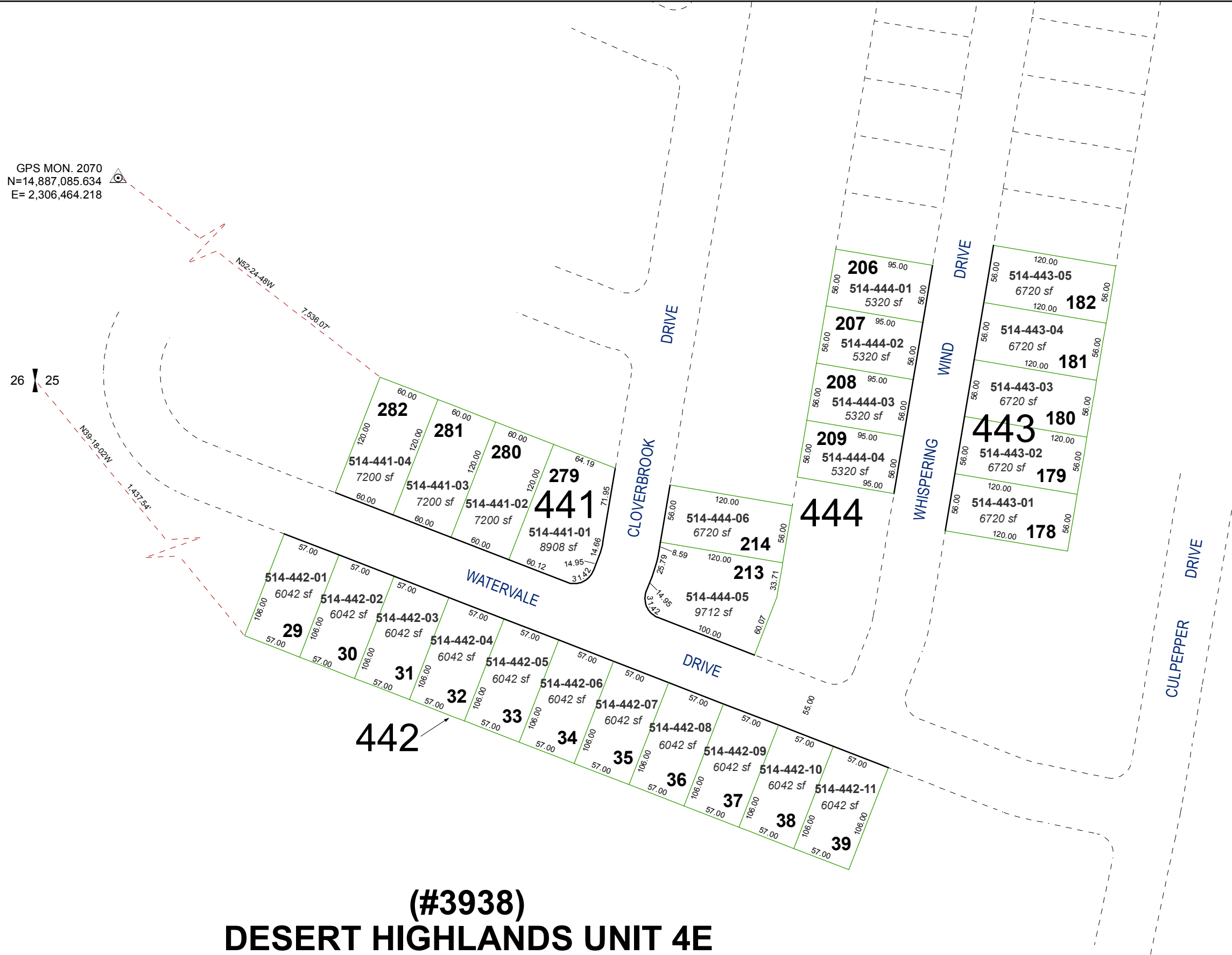


GPS MON. 2070
 N=14,887,085.634
 E= 2,306,464.218

26 | 25

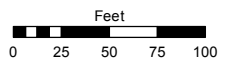


(#3938)
DESERT HIGHLANDS UNIT 4E
 A PLANNED DEVELOPMENT
 PORTION OF W 1/2 OF SECTION 25
 T20N - R20E

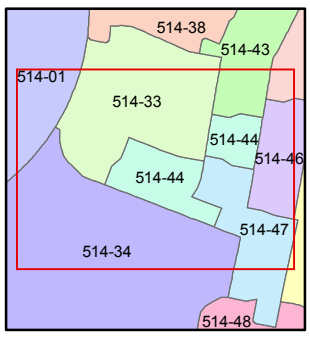
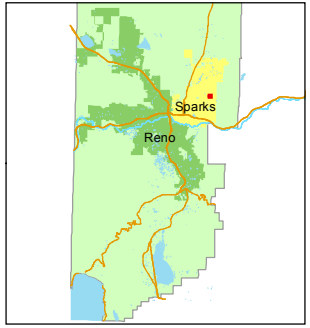
Assessor's Map Number
514-44

STATE OF NEVADA
WASHOE COUNTY
 ASSESSOR'S OFFICE
 Joshua G. Wilson, Assessor

1001 East Ninth Street
 Building D
 Reno, Nevada 89512
 (775) 328-2231



1 inch = 100 feet



created by: KSB 12/06/11

last updated: _____

area previously shown on map(s)
514-33, 514-34

NOTE: This map was prepared for the use of the Washoe County Assessor for assessment and illustrative purposes only. It does not represent a survey of the premises. No liability is assumed as to the sufficiency or accuracy of the data delineated hereon.