

GPS #2072
N=14,891,331.962
E= 2,306,411.618

23 24
26 25

Assessor's Map Number

514-40

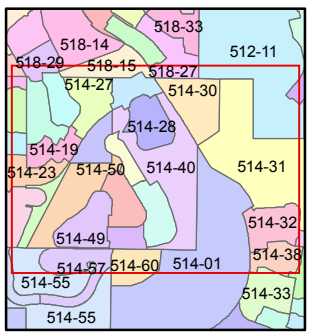
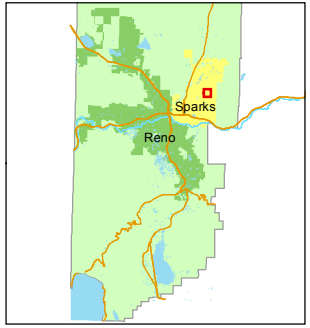
STATE OF NEVADA
WASHOE COUNTY
ASSESSOR'S OFFICE
Joshua G. Wilson, Assessor

1001 East Ninth Street
Building D
Reno, Nevada 89512
(775) 328-2231



Feet
0 75 150 225 300

1 inch = 300 feet



created by: KSB 12/05/11

last updated: _____

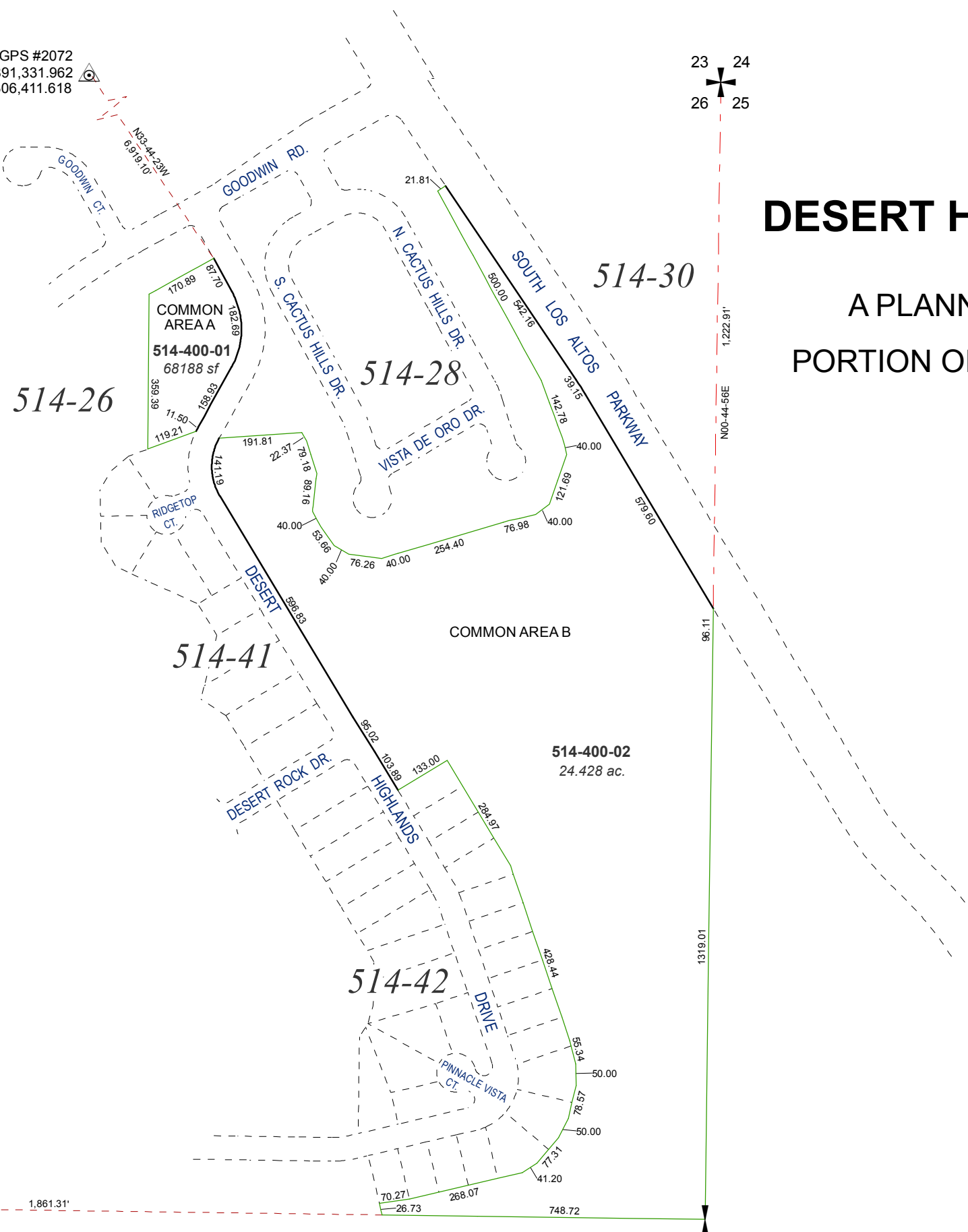
area previously shown on map(s)

514-01, 514-02

NOTE: This map was prepared for the use of the Washoe County Assessor for assessment and illustrative purposes only. It does not represent a survey of the premises. No liability is assumed as to the sufficiency or accuracy of the data delineated hereon.

(#3918) DESERT HIGHLANDS UNIT 1 PHASE 1

A PLANNED DEVELOPMENT
PORTION OF NE 1/4 OF SECTION 26
T20N - R20E



CENTER SECTION 26

N89-13-12W 1,861.31'

1,222.91'
N00-44-56E

96.11'

1319.01'

70.271 26.73 268.07 748.72