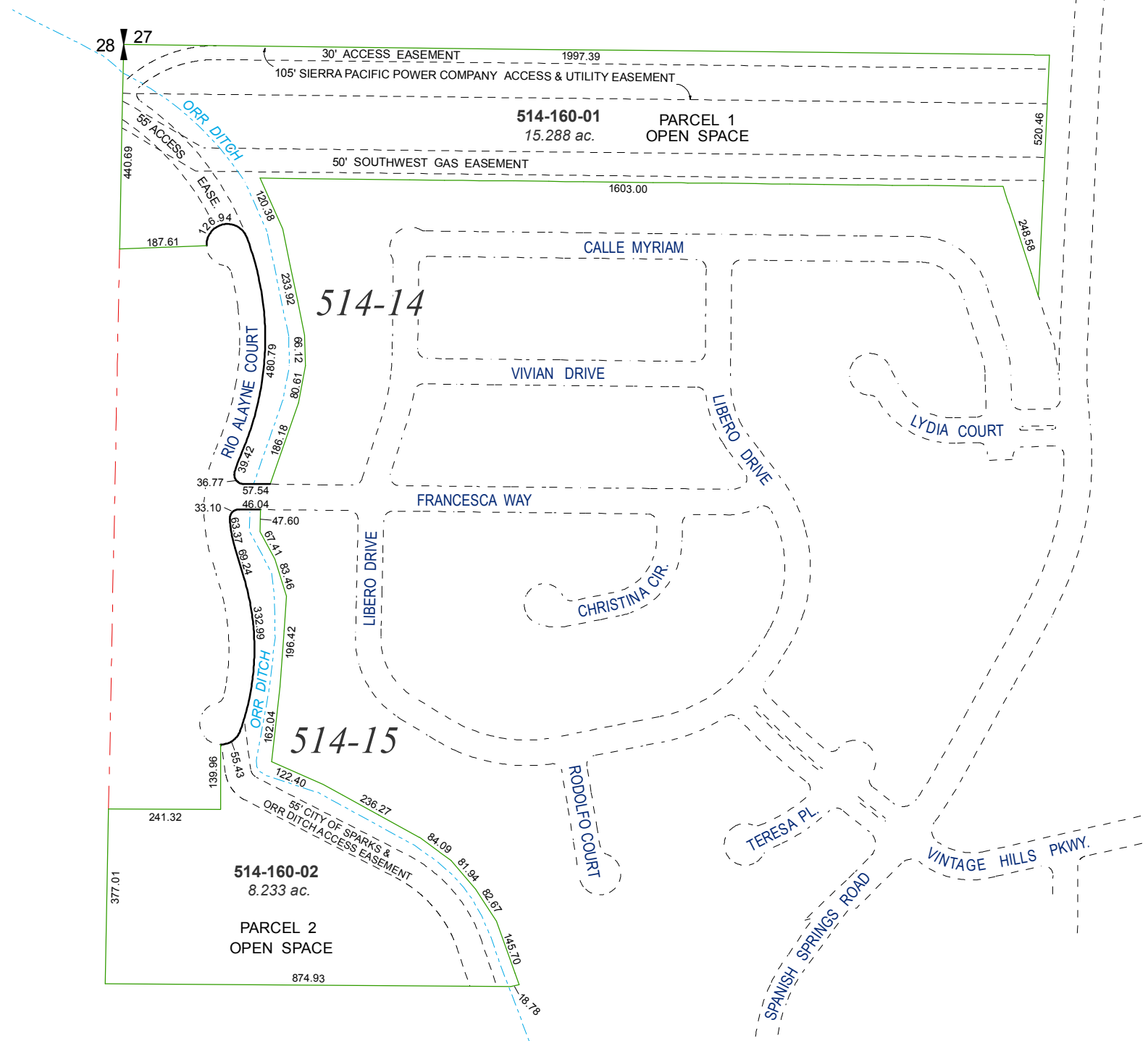


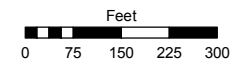
(#3140)
VINTAGE HILLS - UNIT 3
 PORTION SW ¼ SECTION 27, T20N - R20E



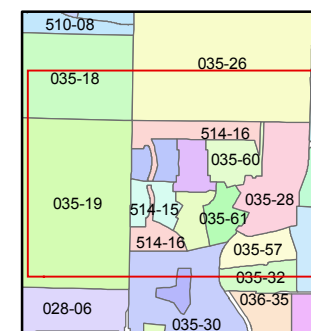
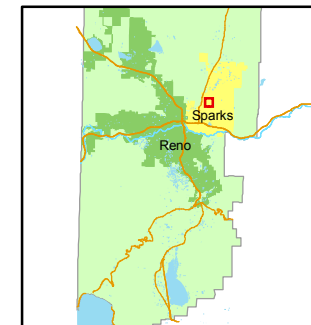
Assessor's Map Number
514-16

STATE OF NEVADA
WASHOE COUNTY
ASSESSOR'S OFFICE
 Joshua G. Wilson, Assessor

1001 East Ninth Street
 Building D
 Reno, Nevada 89512
 (775) 328-2231



1 inch = 300 feet



created by: KSB 5/23/11

last updated: _____

area previously shown on map(s)
035-28

NOTE: This map was prepared for the use of the Washoe County Assessor for assessment and illustrative purposes only. It does not represent a survey of the premises. No liability is assumed as to the sufficiency or accuracy of the data delineated hereon.