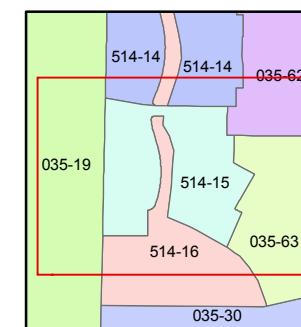
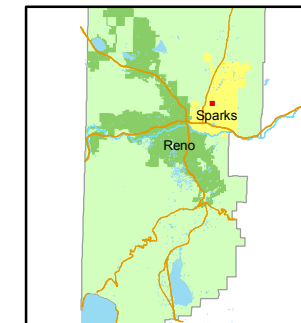


1 inch = 100 feet



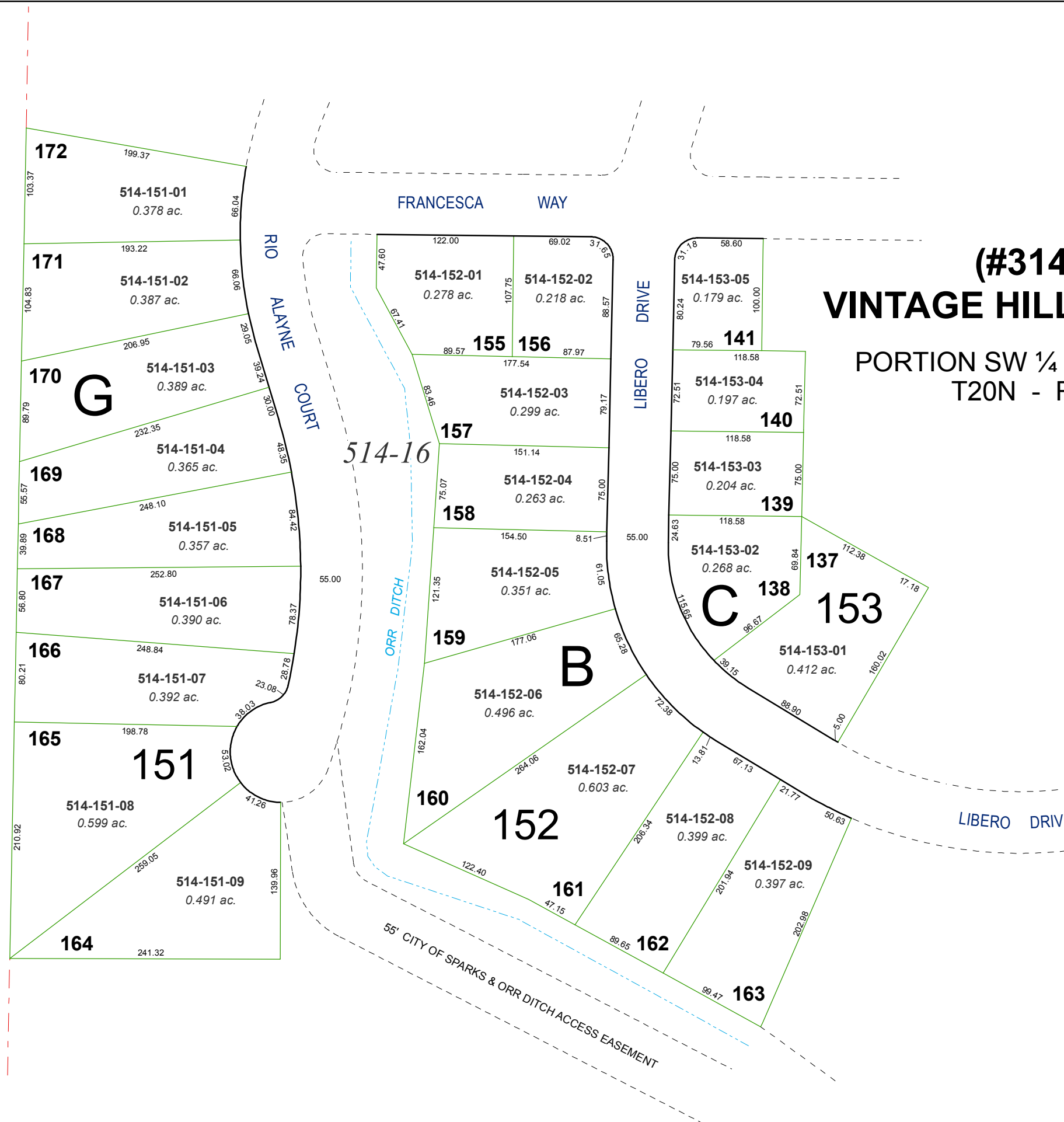
created by: KSB 5/23/11

last updated: _____

area previously shown on map(s)

035-28

NOTE: This map was prepared for the use of the Washoe County Assessor for assessment and illustrative purposes only. It does not represent a survey of the premises. No liability is assumed as to the sufficiency or accuracy of the data delineated herein.



(#3140)
VINTAGE HILLS - UNIT 3

PORTION SW ¼ SECTION 27
T20N - R20E

G

B

C

514-16

152

- 172 514-151-01 0.378 ac.
- 171 514-151-02 0.387 ac.
- 170 514-151-03 0.389 ac.
- 169 514-151-04 0.365 ac.
- 168 514-151-05 0.357 ac.
- 167 514-151-06 0.390 ac.
- 166 514-151-07 0.392 ac.
- 165 514-151-08 0.599 ac.
- 164 514-151-09 0.491 ac.

- 155 514-152-01 0.278 ac.
- 156 514-152-02 0.218 ac.
- 157 514-152-03 0.299 ac.
- 158 514-152-04 0.263 ac.
- 159 514-152-05 0.351 ac.
- 160 514-152-06 0.496 ac.
- 161 514-152-07 0.603 ac.
- 162 514-152-08 0.399 ac.
- 163 514-152-09 0.397 ac.

- 141 514-153-05 0.179 ac.
- 140 514-153-04 0.197 ac.
- 139 514-153-03 0.204 ac.
- 138 514-153-02 0.268 ac.
- 137 514-153-01 0.412 ac.

55' CITY OF SPARKS & ORR DITCH ACCESS EASEMENT