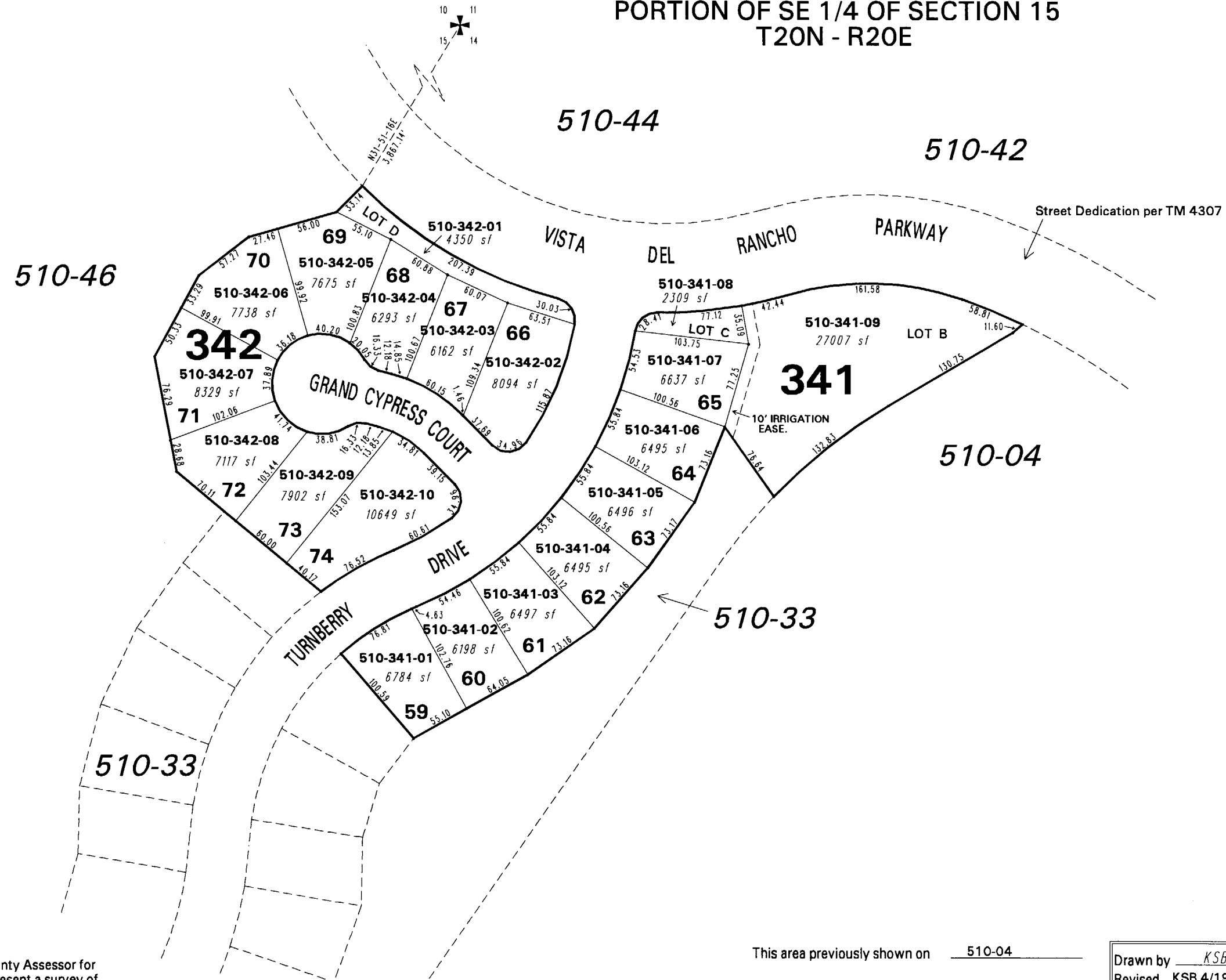


(#4294)
KILEY RANCH
FIRST TEE UNIT No. 9
A PLANNED DEVELOPMENT
PORTION OF SE 1/4 OF SECTION 15
T20N - R20E



NOTE: This map is prepared for the use of the Washoe County Assessor for assessment and illustrative purposes only. It does not represent a survey of the premises. No liability is assumed as to the sufficiency or the accuracy of the data delineated hereon.

Office of Washoe County Assessor, Nevada - Robert W. McGowan

This area previously shown on 510-04

NOTE: Areas of parcels which are less than 2 acres are shown in square feet.

Drawn by	KSB 02/17/04
Revised	KSB 4/19/04 KSB 10/20/04
	KSB 3/15/05