

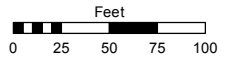
PORTION OF SECTION 16  
T19N - R19E  
ANNEX. T.M. 3653, ORD. #4969

Assessor's Map Number

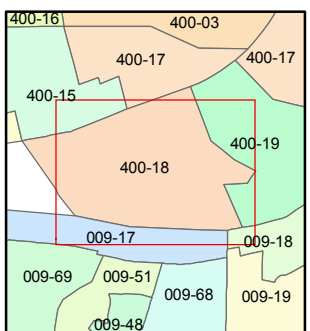
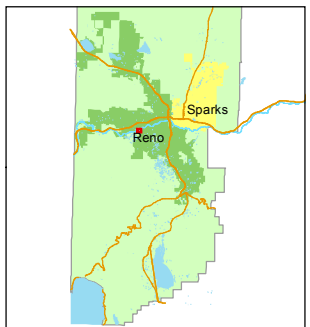
**400-18**

STATE OF NEVADA  
**WASHOE COUNTY**  
ASSESSOR'S OFFICE  
Joshua G. Wilson, Assessor

1001 East Ninth Street  
Building D  
Reno, Nevada 89512  
(775) 328-2231



1 inch = 100 feet

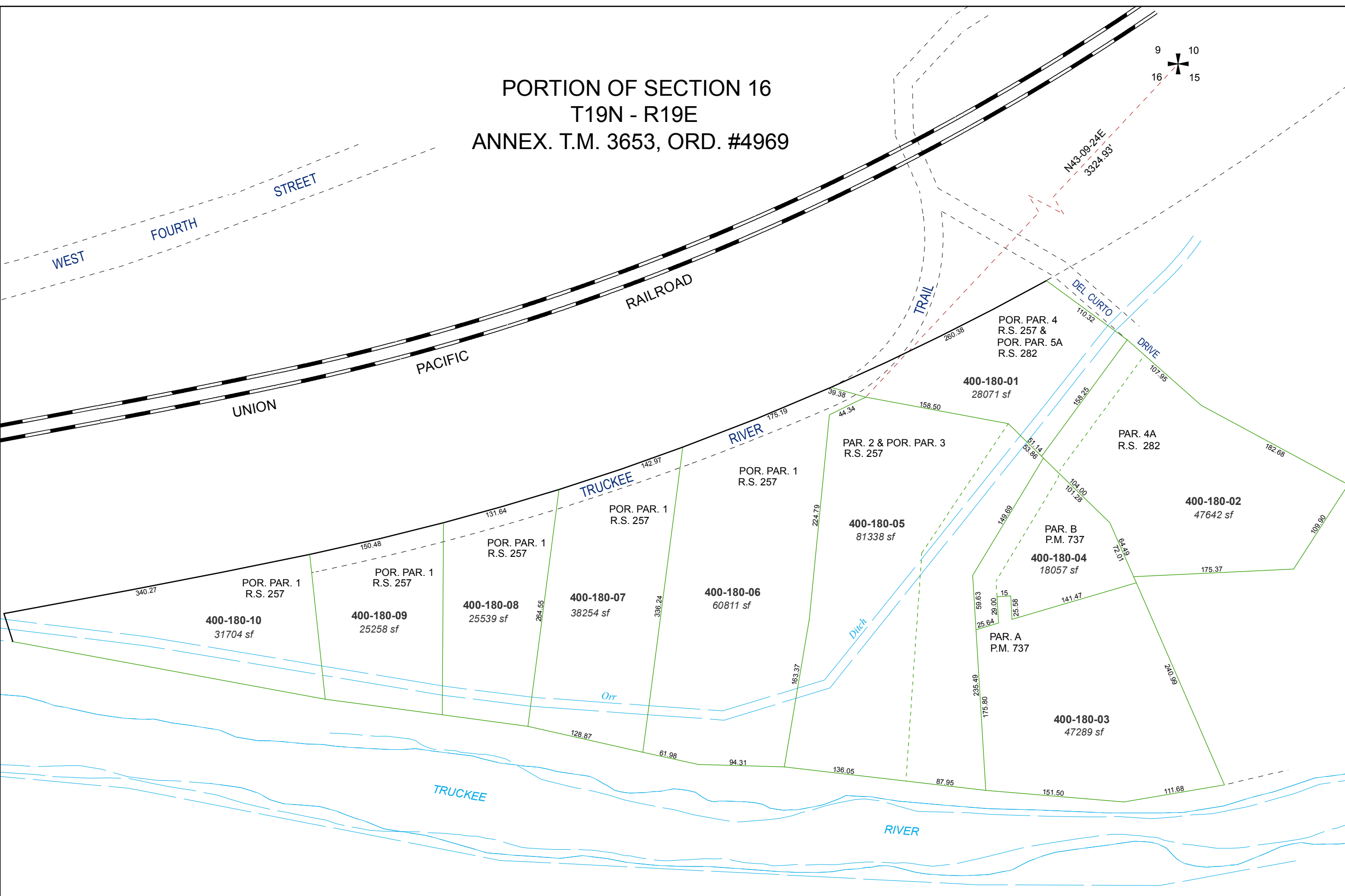
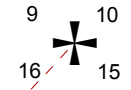


created by: CFB 11/03/2011

last updated: \_\_\_\_\_

area previously shown on map(s)  
005-23

NOTE: This map was prepared for the use of the Washoe County Assessor for assessment and illustrative purposes only. It does not represent a survey of the premises. No liability is assumed as to the sufficiency or accuracy of the data delineated hereon.



Location of Orr Ditch taken from aerial photos