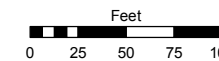
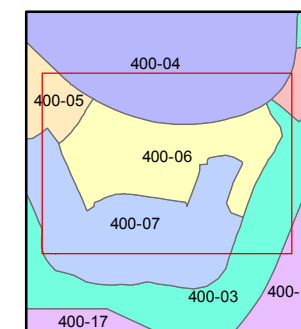
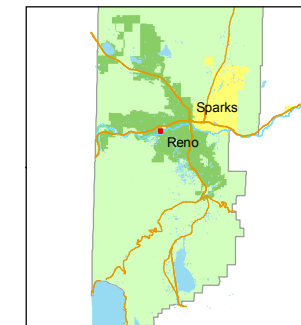


STATE OF NEVADA
WASHOE COUNTY
ASSESSOR'S OFFICE
Joshua G. Wilson, Assessor

1001 East Ninth Street
Building D
Reno, Nevada 89512
(775) 328-2231



1 inch = 100 feet



created by: DSR 3/28/2011

last updated: _____

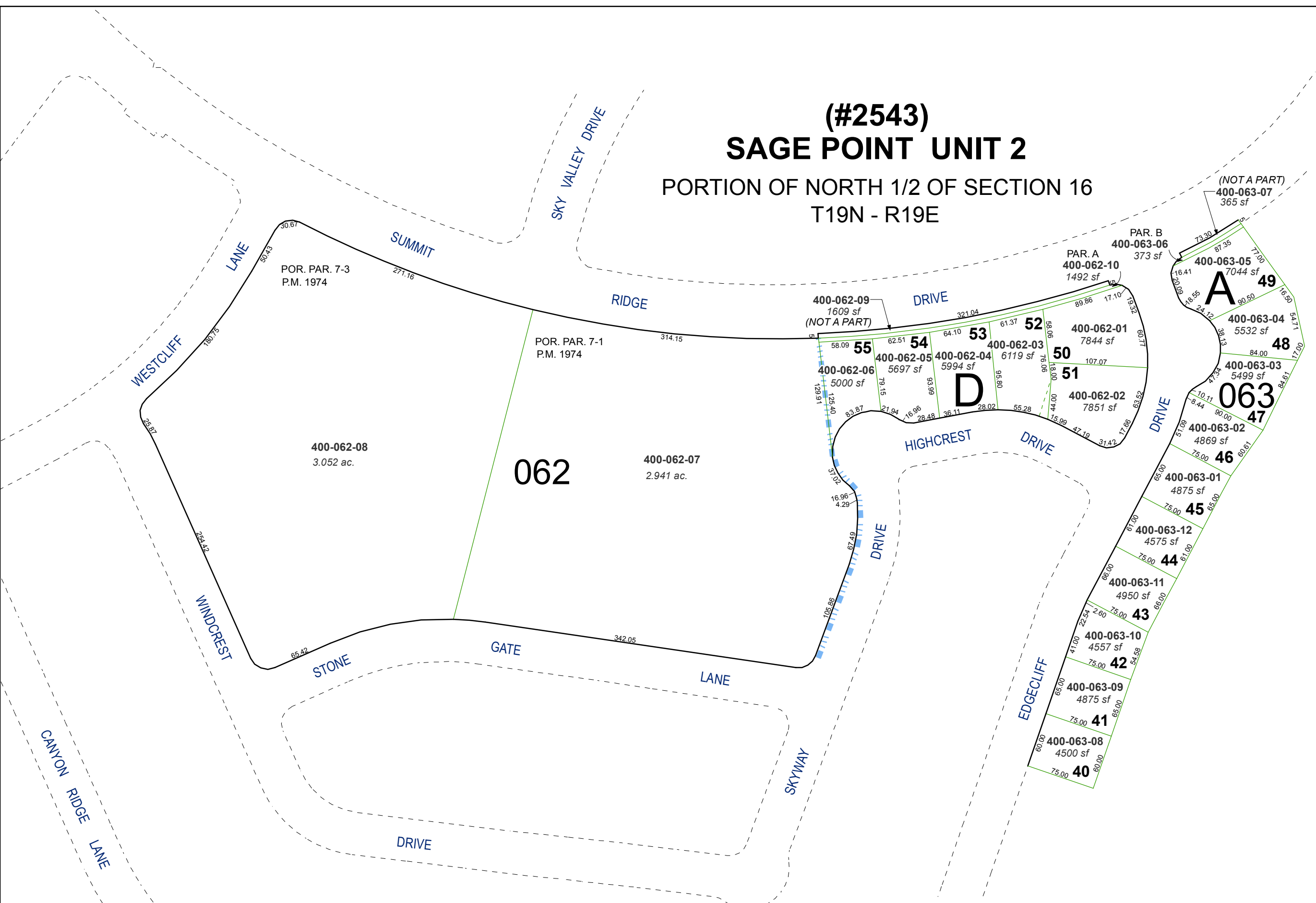
area previously shown on map(s)

05-31 400-07

NOTE: This map was prepared for the use of the Washoe County Assessor for assessment and illustrative purposes only. It does not represent a survey of the premises. No liability is assumed as to the sufficiency or accuracy of the data delineated hereon.

(#2543) SAGE POINT UNIT 2

PORTION OF NORTH 1/2 OF SECTION 16 T19N - R19E



POR. PAR. 7-3
P.M. 1974

POR. PAR. 7-1
P.M. 1974

400-062-08
3.052 ac.

062

400-062-07
2.941 ac.

PAR. A
400-062-10
1492 sf

PAR. B
400-063-06
373 sf

(NOT A PART)
400-063-07
365 sf

A
400-063-05
7044 sf

49
400-063-04
5532 sf

48
400-063-03
5499 sf

063
47
400-063-02
4869 sf

46
400-063-01
4875 sf

45
400-063-12
4575 sf

44
400-063-11
4950 sf

43
400-063-10
4557 sf

42
400-063-09
4875 sf

41
400-063-08
4500 sf

40
400-063-07
4500 sf