

INTERSTATE 80

# PORTION OF THE SW 1/4 SECTION 9 T19N - R19E

SUMMIT  
RIDGE  
COURT

SOUTH

MCCARRAN

BOULEVARD

DRIVE

MOUNTAIN

RIDGE

SKY

DRIVE

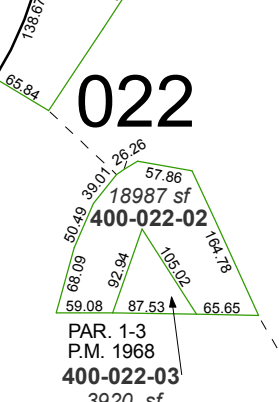
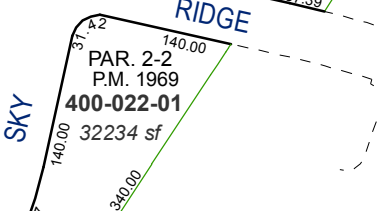
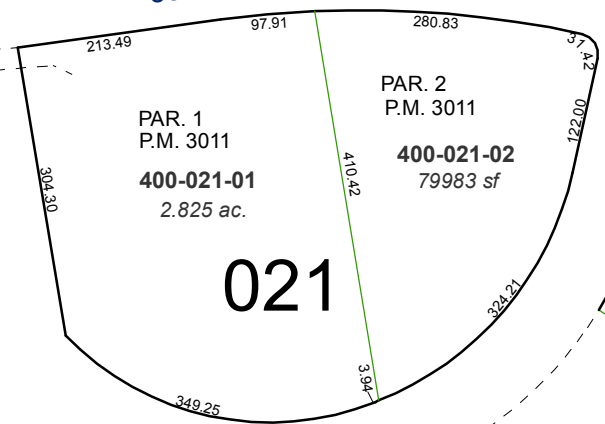
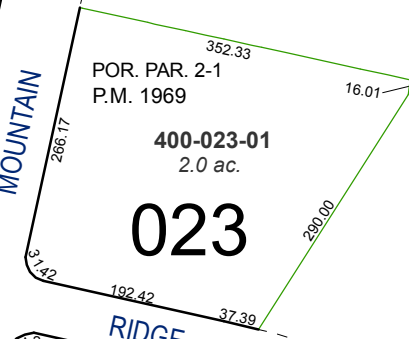
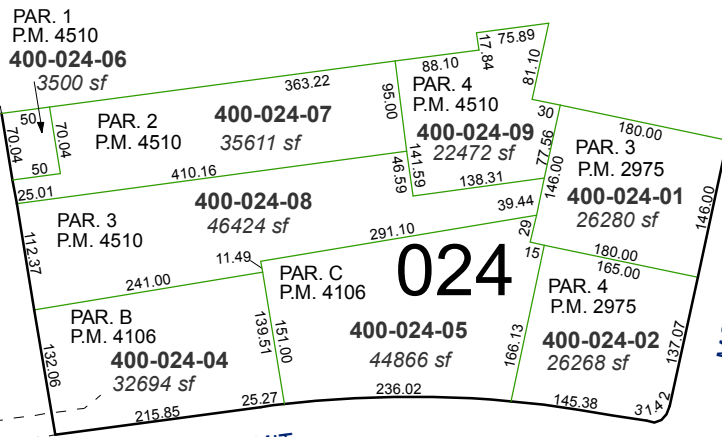
AMBER

HILL

LANE

HILL

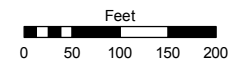
CIRCLE



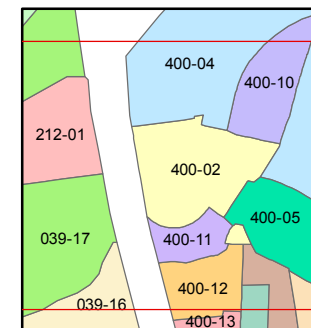
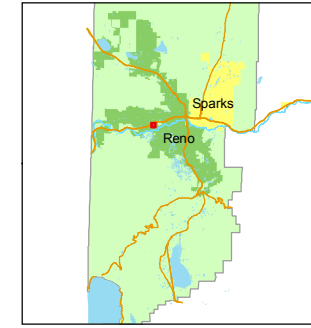
Assessor's Map Number  
**400-02**

STATE OF NEVADA  
**WASHOE COUNTY**  
ASSESSOR'S OFFICE  
Joshua G. Wilson, Assessor

1001 East Ninth Street  
Building D  
Reno, Nevada 89512  
(775) 328-2231



1 inch = 200 feet



created by: DSR 1/31/2011

last updated: \_\_\_\_\_

area previously shown on map(s)  
05-18

NOTE: This map was prepared for the use of the Washoe County Assessor for assessment and illustrative purposes only. It does not represent a survey of the premises. No liability is assumed as to the sufficiency or accuracy of the data delineated hereon.