

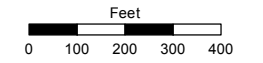
**(#5023)  
SIERRA CANYON VILLAGE 11A**

**(#4806)  
SIERRA CANYON VILLAGE 11 & 12  
A PLANNED UNIT DEVELOPMENT  
A PORTION OF SECTION 15  
T19N - R18E**

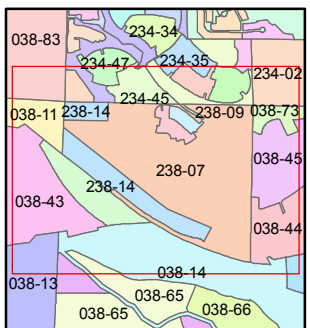
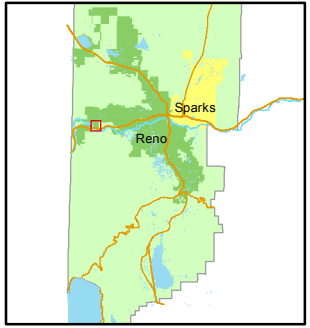
Assessor's Map Number  
**238-07**

STATE OF NEVADA  
**WASHOE COUNTY  
ASSESSOR'S OFFICE**  
Joshua G. Wilson, Assessor

1001 East Ninth Street  
Building D  
Reno, Nevada 89512  
(775) 328-2231



1 inch = 400 feet

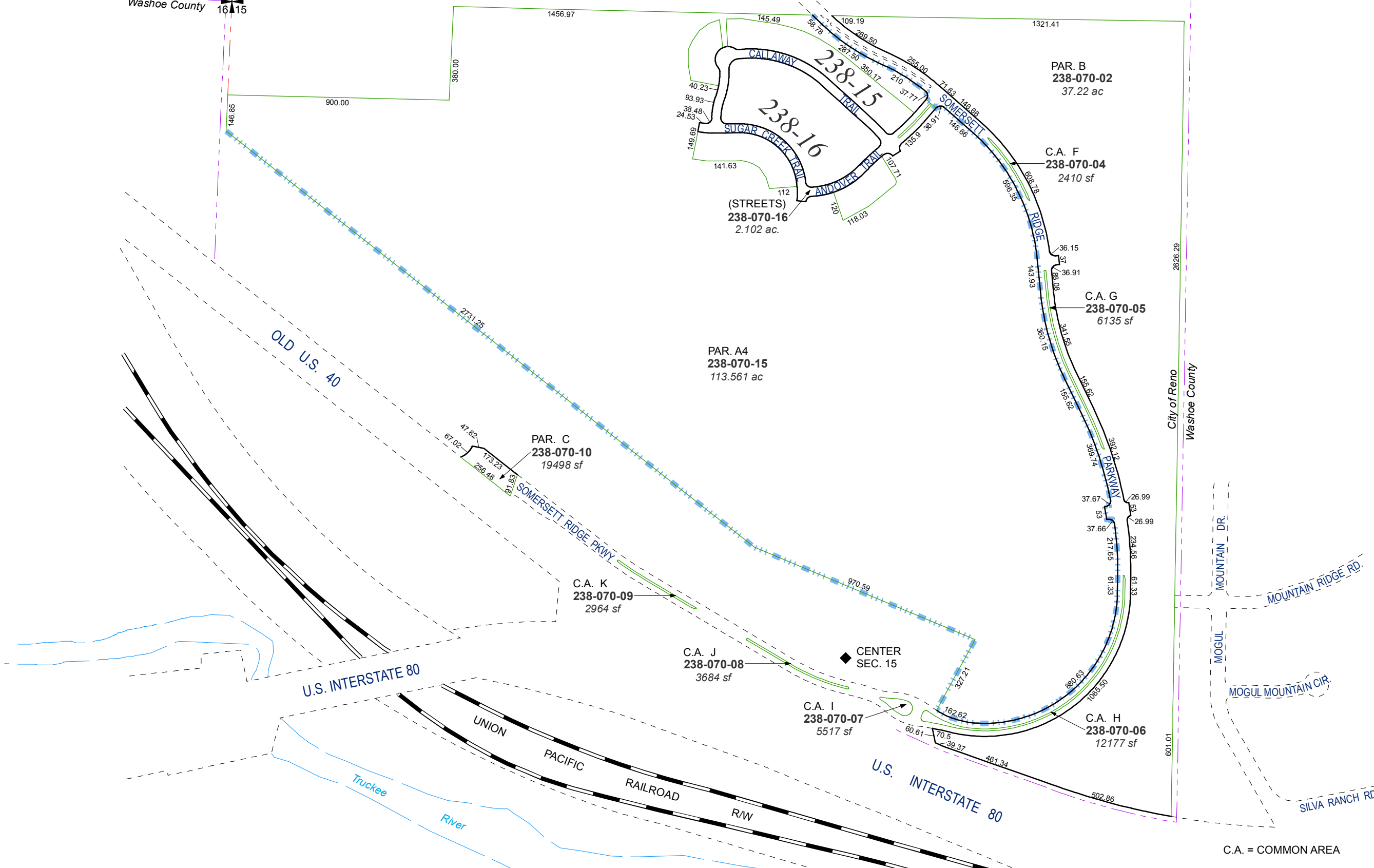


created by: NLH 06/27/2012  
last updated: NLH 7/5/12 NLH 7/6/12

area previously shown on map(s)  
038-38

NOTE: This map was prepared for the use of the Washoe County Assessor for assessment and illustrative purposes only. It does not represent a survey of the premises. No liability is assumed as to the sufficiency or accuracy of the data delineated herein.

City of Reno  
Washoe County  
9 10  
16 15



C.A. = COMMON AREA