

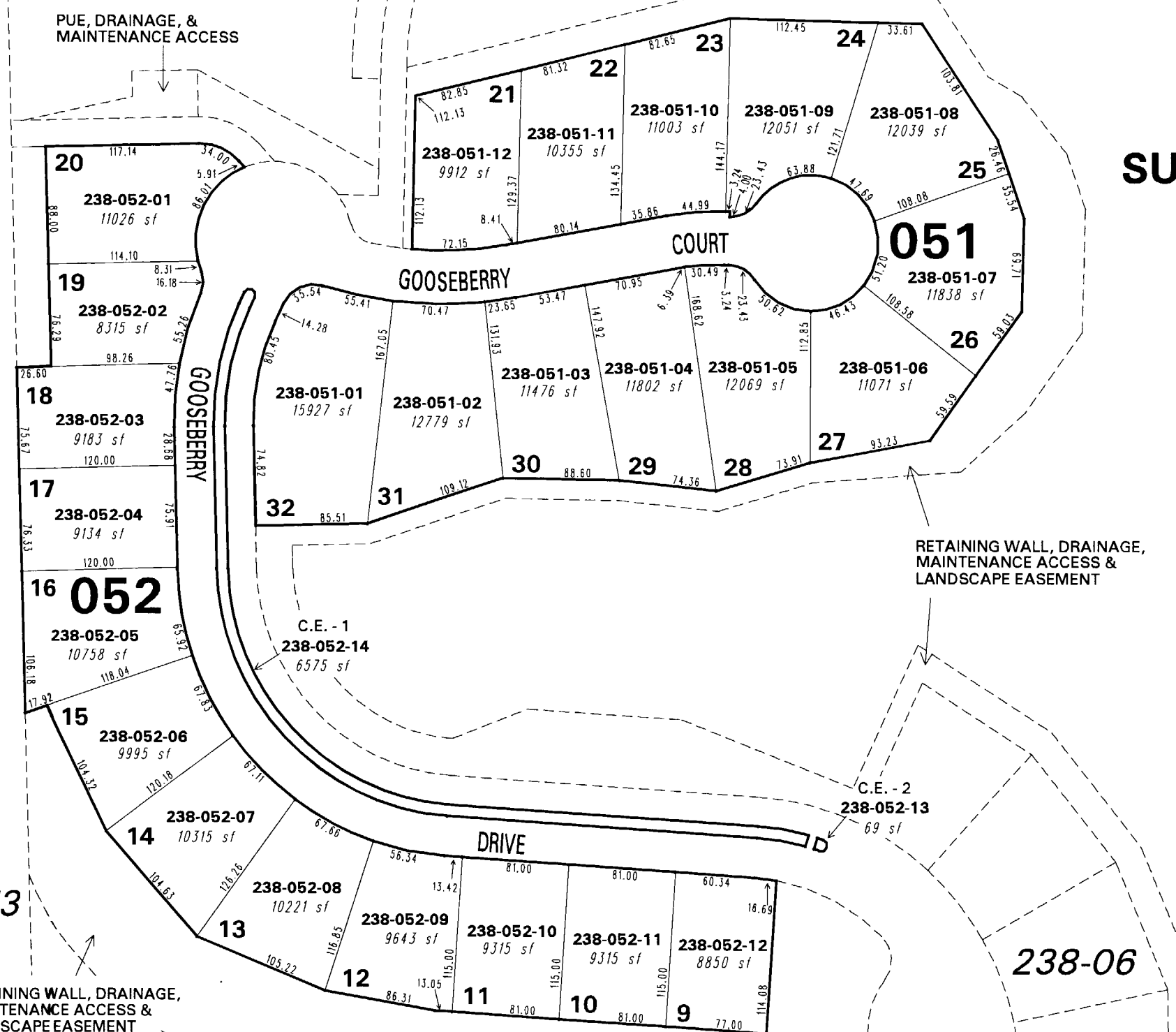
RETAINING WALL, DRAINAGE, MAINTENANCE ACCESS & LANDSCAPE EASEMENT

238-04

PUE, DRAINAGE, & MAINTENANCE ACCESS

(#4711) SUNSET BLUFFS SUBDIVISION COMMON INTEREST COMMUNITY

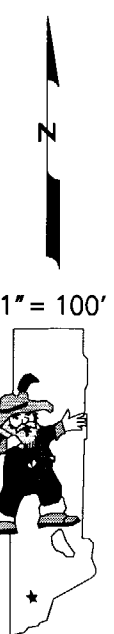
PORTION OF SECTION 11 T19N - R18E



RETAINING WALL, DRAINAGE, MAINTENANCE ACCESS & LANDSCAPE EASEMENT

238-04

C.E. = COMMON ELEMENT: LANDSCAPING WITHIN COMMON ELEMENT TO BE MAINTAINED BY HOMEOWNERS ASSOCIATION.



038-73

RETAINING WALL, DRAINAGE, MAINTENANCE ACCESS & LANDSCAPE EASEMENT

NOTE: This map is prepared for the use of the Washoe County Assessor for assessment and illustrative purposes only. It does not represent a survey of the premises. No liability is assumed as to the sufficiency or the accuracy of the data delineated hereon.

Office of Washoe County Assessor, Nevada - Joshua G. Wilson

This area previously shown on 038-72

NOTE: Areas of parcels which are less than 2 acres are shown in square feet.

Drawn by NLH 11/07/06
 Revised NLH 01/30/07