

234-40

234-64

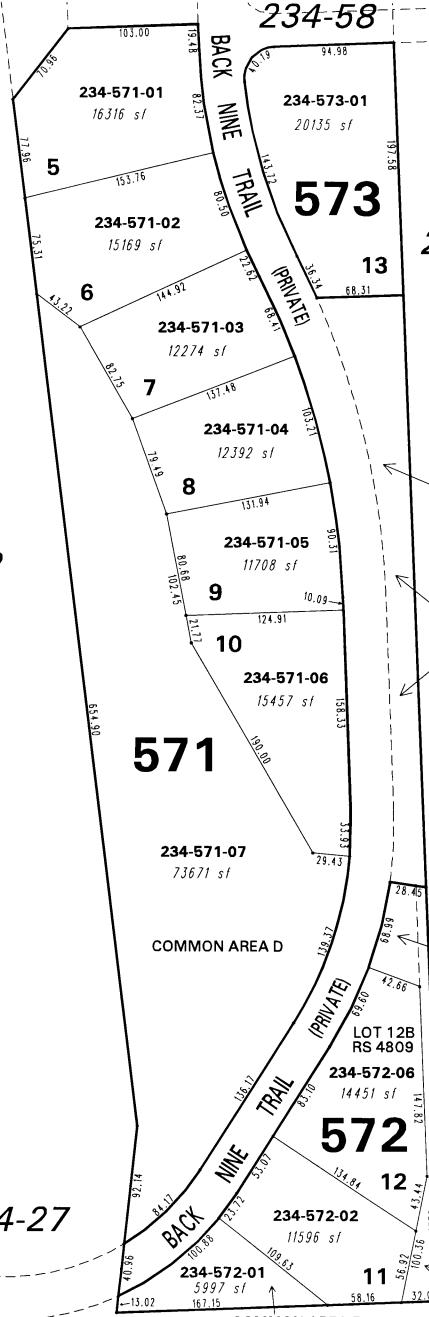
234-56

234-65

234-40

234-02

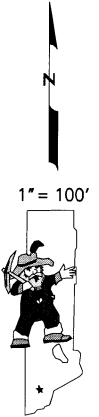
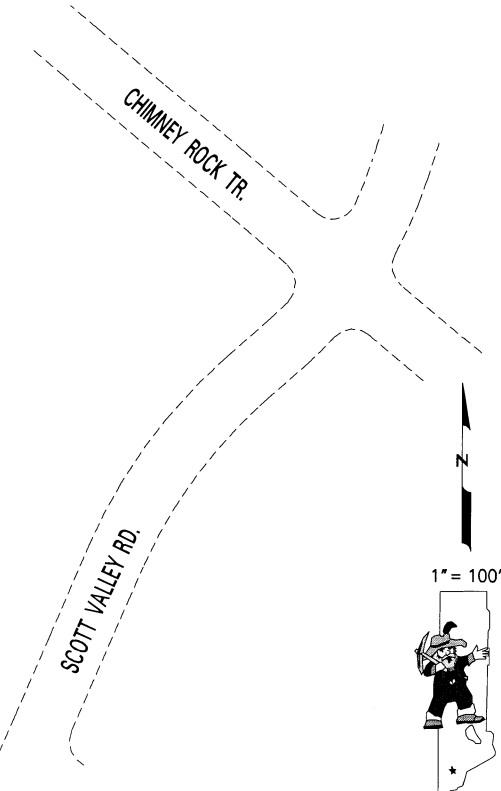
234-27



(#4677)
2H @ SOMERSETT
 A PLANNED UNIT DEVELOPMENT
 PORTIONS OF NE 1/4 SECTION 10 &
 SE 1/4 SECTION 3
 T19N - R18E

Private Driveway Access, Water Service & Landscape Maintenance Easements are granted over portions of Common Area A for the benefit of future subdivisions abutting this boundary. (Parceled on 234-56)

Private Driveway Access, Water Service & Landscape Maintenance Easements & PUE per Doc. #3452366



NOTE: This map is prepared for the use of the Washoe County Assessor for assessment and illustrative purposes only. It does not represent a survey of the premises. No liability is assumed as to the sufficiency or the accuracy of the data delineated hereon.

Office of Washoe County Assessor, Nevada - Joshua G. Wilson

This area previously shown on 234-02

NOTE: Areas of parcels which are less than 2 acres are shown in square feet.

Drawn by	KSB 09/18/06
Revised	KSB 11/28/06 KSB 3/20/08