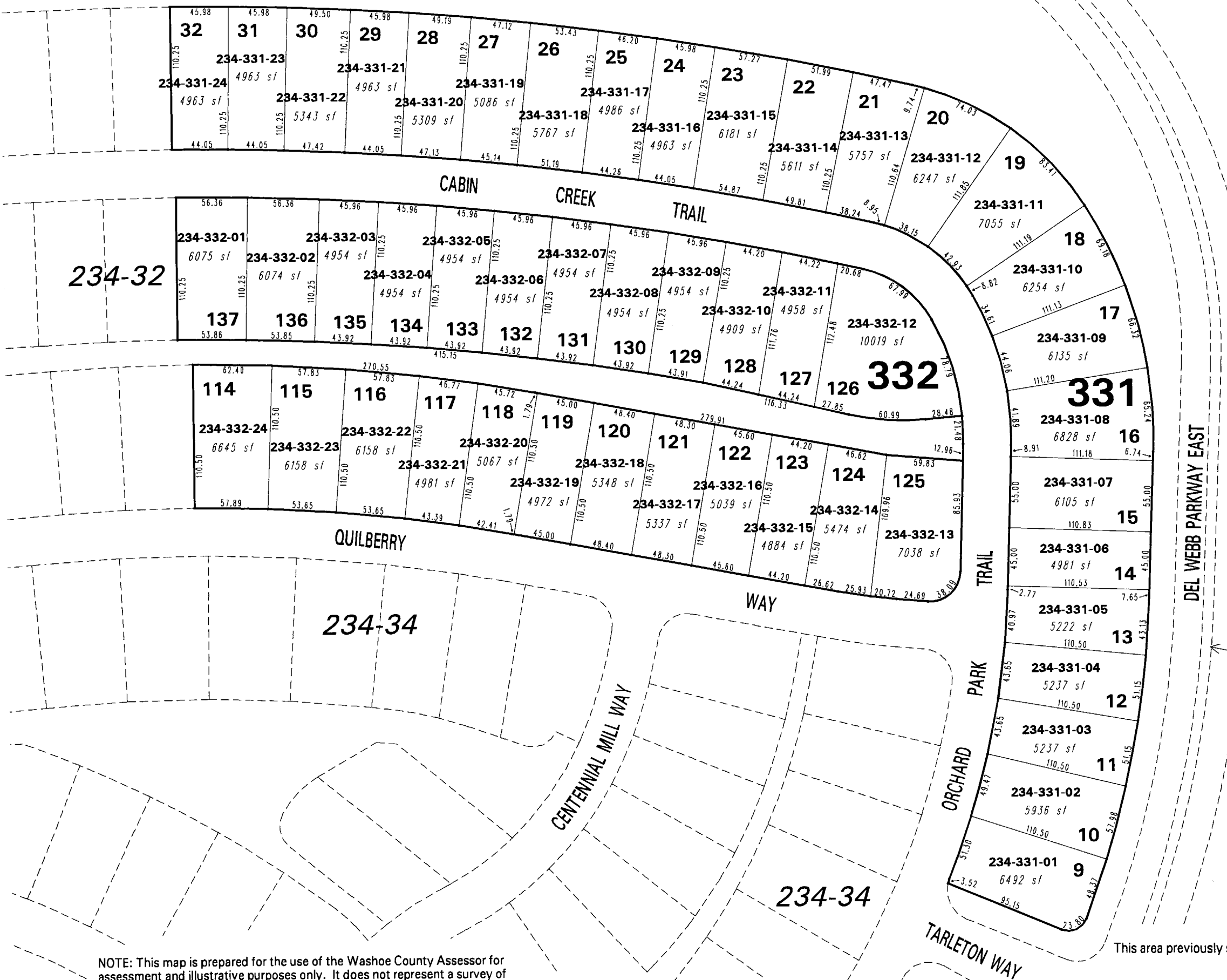


234-31

**(#4444)
SIERRA CANYON
AT SOMERSETT
BY DEL WEBB
VILLAGE 5**

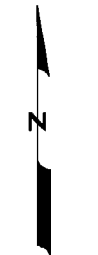
**A PLANNED UNIT DEVELOPMENT
PORTION OF SW 1/4 SECTION 10
T19N - R18E**

234-32



DEL WEBB PARKWAY EAST

234-31



1" = 80'



NOTE: This map is prepared for the use of the Washoe County Assessor for assessment and illustrative purposes only. It does not represent a survey of the premises. No liability is assumed as to the sufficiency or the accuracy of the data delineated hereon.

Office of Washoe County Assessor, Nevada - Robert W. McGowan

This area previously shown on 234-02

NOTE: Areas of parcels which are less than 2 acres are shown in square feet.

Drawn by KSB 03/23/05
 Revised _____

