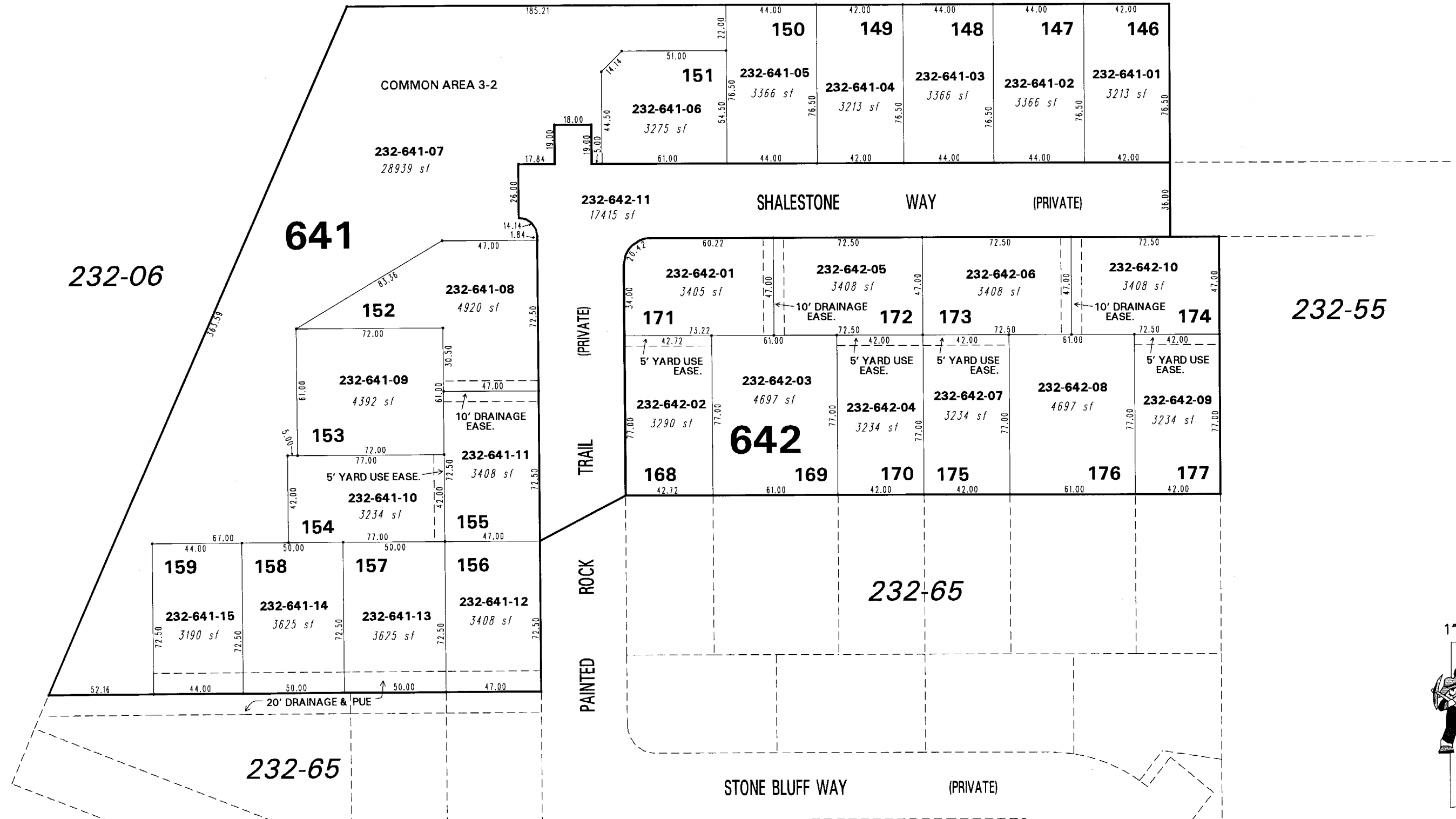


SOMERSETT TOWN CENTER RESIDENTIAL PHASE 3 (#4413) A PLANNED UNIT DEVELOPMENT POR. OF NW 1/4 SEC. 12, T19N - R18E

232-05



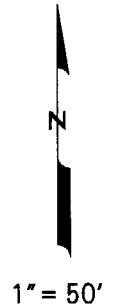
232-06

641

232-55

642

232-65



NOTE: This map is prepared for the use of the Washoe County Assessor for assessment and illustrative purposes only. It does not represent a survey of the premises. No liability is assumed as to the sufficiency or the accuracy of the data delineated herein.

Office of Washoe County Assessor, Nevada - Robert W. McGowan

This area previously shown on 232-06

NOTE: Areas of parcels which are less than 2 acres are shown in square feet.

Drawn by KSB 12/30/04
 Revised _____

