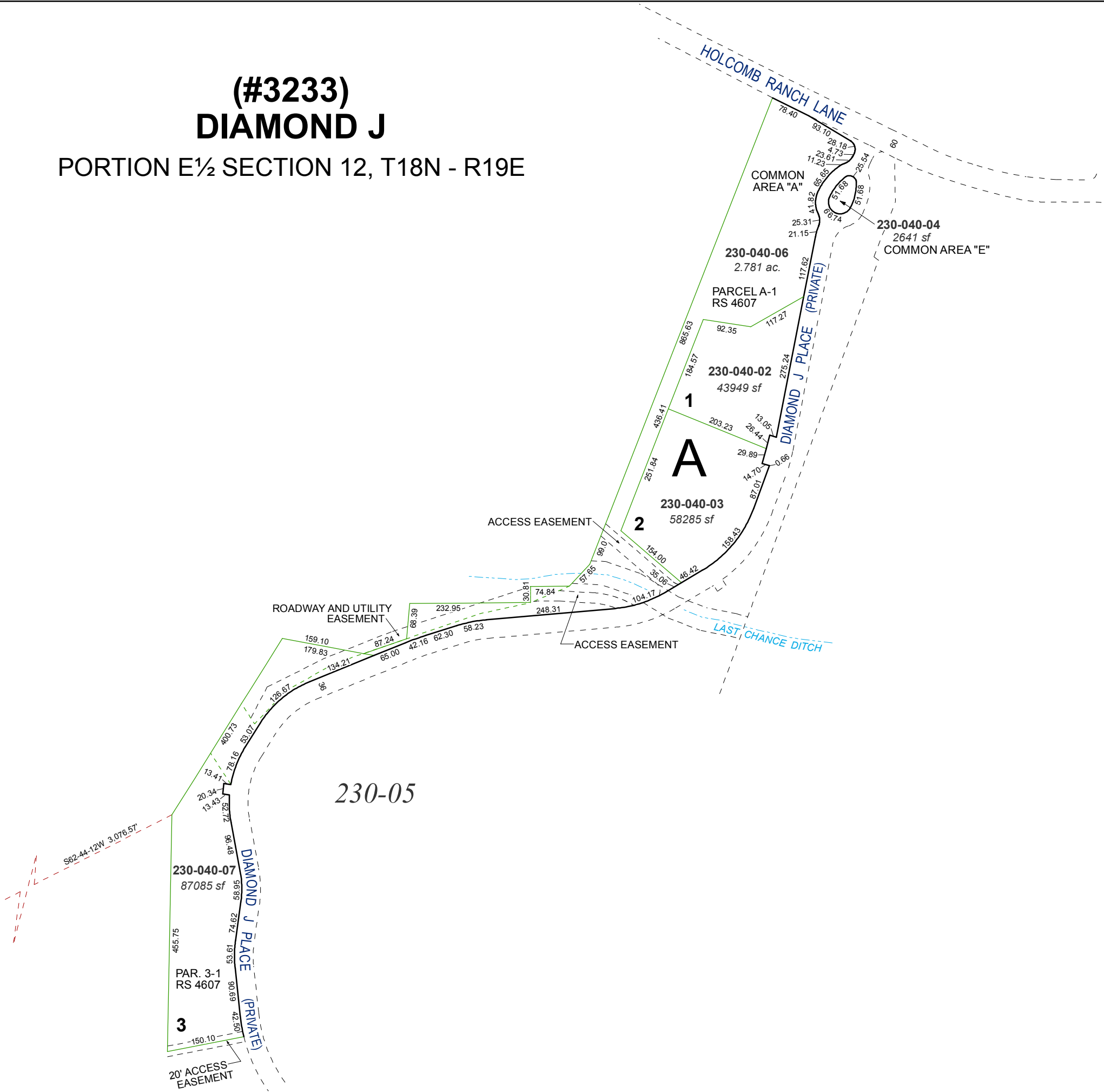
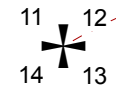


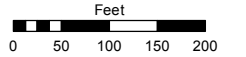
**(#3233)
DIAMOND J**
PORTION E½ SECTION 12, T18N - R19E



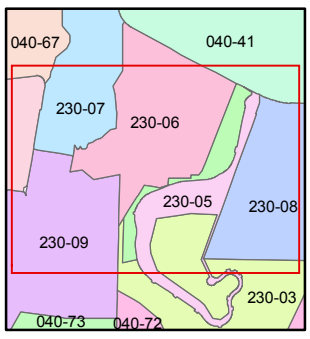
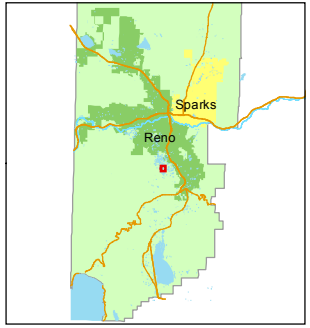
Assessor's Map Number
230-04

STATE OF NEVADA
WASHOE COUNTY
ASSESSOR'S OFFICE
Joshua G. Wilson, Assessor

1001 East Ninth Street
Building D
Reno, Nevada 89512
(775) 328-2231



1 inch = 200 feet



created by: KSB 2/23/2012

last updated: _____

area previously shown on map(s)
040-87

NOTE: This map was prepared for the use of the Washoe County Assessor for assessment and illustrative purposes only. It does not represent a survey of the premises. No liability is assumed as to the sufficiency or accuracy of the data delineated hereon.